

**SEMA3C Polyclonal Antibody**

|                              |   |
|------------------------------|---|
| <b>Catalog No :</b>          | YT4233  |
| <b>Reactivity :</b>          | Human;Mouse;Rat   |
| <b>Applications :</b>        | WB;IHC;IF;ELISA   |
| <b>Target :</b>              | SEMA3C  |
| <b>Fields :</b>              | >>Axon guidance   |
| <b>Gene Name :</b>           | SEMA3C  |
| <b>Protein Name :</b>        | Semaphorin-3C   |
| <b>Human Gene Id :</b>       | 10512   |
| <b>Human Swiss Prot No :</b> | Q99985  |
| <b>Mouse Gene Id :</b>       | 20348   |
| <b>Mouse Swiss Prot No :</b> | Q62181  |
| <b>Immunogen :</b>           | The antiserum was produced against synthesized peptide derived from human SEMA3C. AA range:701-750                    |
| <b>Specificity :</b>         | SEMA3C Polyclonal Antibody detects endogenous levels of SEMA3C protein.   |
| <b>Formulation :</b>         | Liquid in PBS containing 50% glycerol, 0.5% BSA and 0.02% sodium azide.   |
| <b>Source :</b>              | Polyclonal, Rabbit,IgG  |
| <b>Dilution :</b>            | WB 1:500-2000 IHC 1:100 - 1:300. ELISA: 1:40000. IF 1:50-200  |
| <b>Purification :</b>        | The antibody was affinity-purified from rabbit antiserum by affinity-chromatography using epitope-specific immunogen. |
| <b>Concentration :</b>       | 1 mg/ml   |

---

**Storage Stability :** -15°C to -25°C/1 year(Do not lower than -25°C)

---

**Molecularweight :** 85kD

---

**Cell Pathway :** Axon guidance;

---

**Background :** function:May be involved in diverse cell survival mechanisms.,similarity:Belongs to the semaphorin family.,similarity:Contains 1 Ig-like C2-type (immunoglobulin-like) domain.,similarity:Contains 1 PSI domain.,similarity:Contains 1 Sema domain.,tissue specificity:Expressed intensely in the heart, skeletal muscle, colon, small intestine, ovary, testis, and prostate. Faint expression ubiquitously among other organs, including brain.,

---

**Function :** function:May be involved in diverse cell survival mechanisms.,similarity:Belongs to the semaphorin family.,similarity:Contains 1 Ig-like C2-type (immunoglobulin-like) domain.,similarity:Contains 1 PSI domain.,similarity:Contains 1 Sema domain.,tissue specificity:Expressed intensely in the heart, skeletal muscle, colon, small intestine, ovary, testis, and prostate. Faint expression ubiquitously among other organs, including brain.,

---

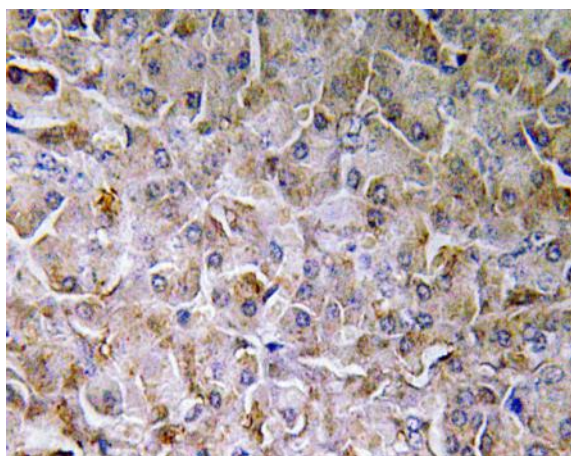
**Subcellular Location :** Secreted.

---

**Expression :** Expressed intensely in the heart, skeletal muscle, colon, small intestine, ovary, testis, and prostate. Faint expression ubiquitously among other organs, including brain.

---

## Products Images



Immunohistochemistry analysis of SEMA3C antibody in paraffin-embedded human pancreas tissue.