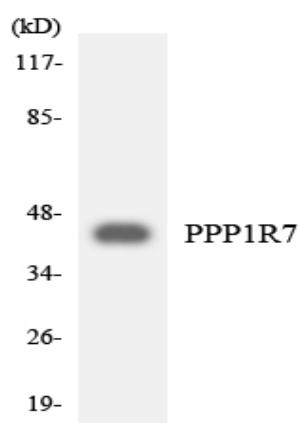
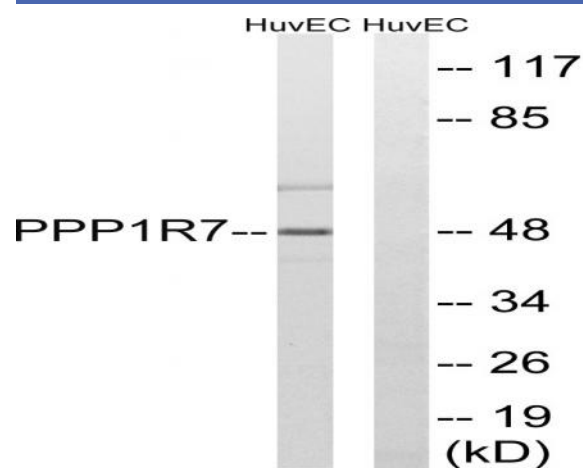


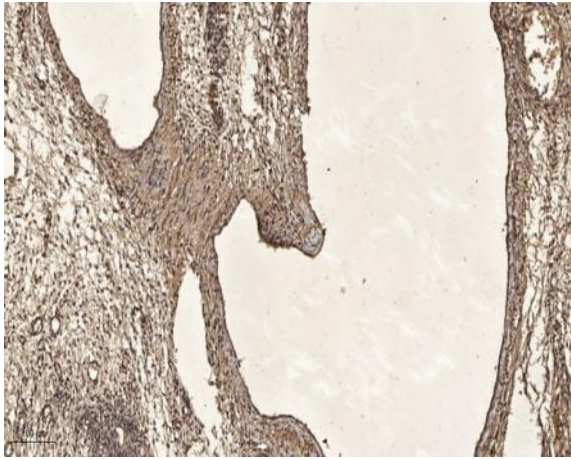
## Sds22 Polyclonal Antibody

<b>Catalog No :</b>	YT4227
<b>Reactivity :</b>	Human;Rat;Mouse;
<b>Applications :</b>	WB;ELISA;IHC
<b>Target :</b>	Sds22
<b>Gene Name :</b>	PPP1R7
<b>Protein Name :</b>	Protein phosphatase 1 regulatory subunit 7
<b>Human Gene Id :</b>	5510
<b>Human Swiss Prot No :</b>	Q15435
<b>Mouse Swiss Prot No :</b>	Q3UM45
<b>Immunogen :</b>	The antiserum was produced against synthesized peptide derived from human PPP1R7. AA range:136-185
<b>Specificity :</b>	Sds22 Polyclonal Antibody detects endogenous levels of Sds22 protein.
<b>Formulation :</b>	Liquid in PBS containing 50% glycerol, 0.5% BSA and 0.02% sodium azide.
<b>Source :</b>	Polyclonal, Rabbit,IgG
<b>Dilution :</b>	WB 1:500-2000;IHC 1:50-300; ELISA 2000-20000
<b>Purification :</b>	The antibody was affinity-purified from rabbit antiserum by affinity-chromatography using epitope-specific immunogen.
<b>Concentration :</b>	1 mg/ml
<b>Storage Stability :</b>	-15°C to -25°C/1 year(Do not lower than -25°C)
<b>Observed Band :</b>	48kD

<b>Background :</b>	This gene encodes a protein subunit that regulates the activity of the serine/threonine phosphatase, protein phosphatase-1. The encoded protein is required for completion of the mitotic cycle and for targeting protein phosphatase-1 to mitotic kinetochores. Alternate splicing results in multiple transcript variants. [provided by RefSeq, Sep 2013],
<b>Function :</b>	function:Regulatory subunit of protein phosphatase 1.,similarity:Belongs to the SDS22 family.,similarity:Contains 10 LRR (leucine-rich) repeats.,subunit:Interacts with PPP1CA, PPP1CB and PPP1CC/PPP1G isoform 1.,tissue specificity:Widely expressed.,
<b>Subcellular Location :</b>	Nucleus .
<b>Expression :</b>	Widely expressed.

## Products Images





Immunohistochemical analysis of paraffin-embedded human oophoroma. 1, Antibody was diluted at 1:200(4° overnight). 2, Tris-EDTA,pH9.0 was used for antigen retrieval. 3,Secondary antibody was diluted at 1:200(room temperature, 45min).