

STEAP2 Polyclonal Antibody

Catalog No :	YT4458
Reactivity :	Human;Mouse
Applications :	WB;IHC;IF;ELISA
Target :	STEAP2
Fields :	>>Mineral absorption
Gene Name :	STEAP2
Protein Name :	Metalloreductase STEAP2
Human Gene Id :	261729
Human Swiss Prot No :	Q8NFT2
Mouse Gene Id :	74051
Mouse Swiss Prot No :	Q8BWB6
Immunogen :	The antiserum was produced against synthesized peptide derived from human STEA2. AA range:431-480
Specificity :	STEAP2 Polyclonal Antibody detects endogenous levels of STEAP2 protein.
Formulation :	Liquid in PBS containing 50% glycerol, 0.5% BSA and 0.02% sodium azide.
Source :	Polyclonal, Rabbit,IgG
Dilution :	WB 1:500 - 1:2000. IHC: 1:100-300 ELISA: 1:20000. IF 1:100-300 Not yet tested in other applications.
Purification :	The antibody was affinity-purified from rabbit antiserum by affinity-chromatography using epitope-specific immunogen.
Concentration :	1 mg/ml

Storage Stability : -15°C to -25°C/1 year(Do not lower than -25°C)

Molecularweight : 56kD

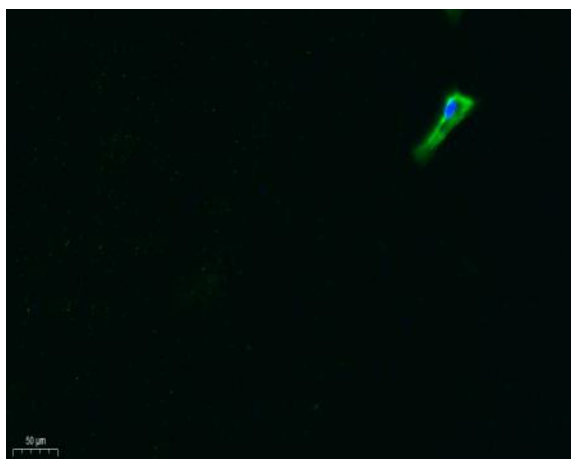
Background : STEAP2 metalloreductase(STEAP2) Homo sapiens This gene is a member of the STEAP family and encodes a multi-pass membrane protein that localizes to the Golgi complex, the plasma membrane, and the vesicular tubular structures in the cytosol. A highly similar protein in mouse has both ferrereductase and cupric reductase activity, and stimulates the cellular uptake of both iron and copper in vitro. Increased transcriptional expression of the human gene is associated with prostate cancer progression. Alternate transcriptional splice variants, encoding different isoforms, have been characterized. [provided by RefSeq, Jul 2008],

Function : cofactor:FAD.,function:Metalloreductase that has the ability to reduce both Fe(3+) to Fe(2+) and Cu(2+) to Cu(1+). Uses NAD(+) as acceptor.,similarity:Belongs to the STEAP family.,similarity:Contains 1 ferric oxidoreductase domain.,tissue specificity:Expressed at high levels in prostate and at significantly lower levels in heart, brain, kidney, pancreas, and ovary.,

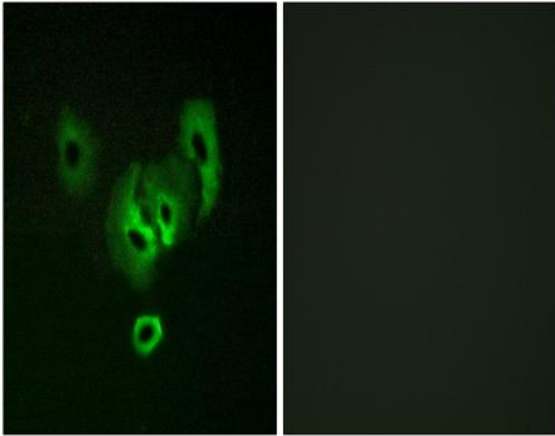
Subcellular Location : Endosome membrane ; Multi-pass membrane protein . Cell membrane ; Multi-pass membrane protein .

Expression : Expressed at high levels in prostate and at significantly lower levels in heart, brain, kidney, pancreas, and ovary.

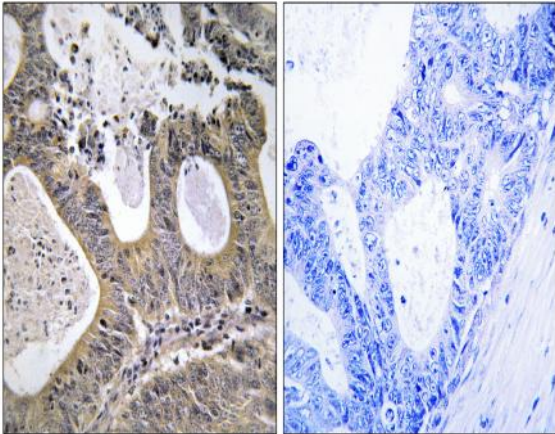
Products Images



Immunofluorescence analysis of A549. 1,primary Antibody was diluted at 1:200(4°C overnight). 2, Goat Anti Rabbit IgG (H&L) - Alexa Fluor 488 Secondary antibody was diluted at 1:1000(room temperature, 50min).3, Picture B: DAPI(blue) 10min.



Immunofluorescence analysis of A549 cells, using STEA2 Antibody. The picture on the right is blocked with the synthesized peptide.



Immunohistochemistry analysis of paraffin-embedded human colon carcinoma tissue, using STEA2 Antibody. The picture on the right is blocked with the synthesized peptide.