

## SSBP1 Polyclonal Antibody

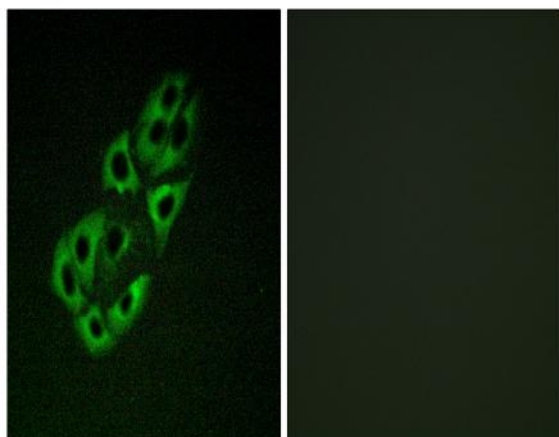
<b>Catalog No :</b>	YT4426
<b>Reactivity :</b>	Human;Mouse;Rat;Cow
<b>Applications :</b>	WB;IHC;IF;ELISA
<b>Target :</b>	SSBP1
<b>Fields :</b>	>>DNA replication;>>Mismatch repair;>>Homologous recombination
<b>Gene Name :</b>	SSBP1
<b>Protein Name :</b>	Single-stranded DNA-binding protein mitochondrial
<b>Human Gene Id :</b>	6742
<b>Human Swiss Prot No :</b>	Q04837
<b>Mouse Gene Id :</b>	381760
<b>Mouse Swiss Prot No :</b>	Q9CYR0
<b>Rat Gene Id :</b>	54304
<b>Rat Swiss Prot No :</b>	P28042
<b>Immunogen :</b>	The antiserum was produced against synthesized peptide derived from human MtSSB. AA range:99-148
<b>Specificity :</b>	SSBP1 Polyclonal Antibody detects endogenous levels of SSBP1 protein.
<b>Formulation :</b>	Liquid in PBS containing 50% glycerol, 0.5% BSA and 0.02% sodium azide.
<b>Source :</b>	Polyclonal, Rabbit,IgG
<b>Dilution :</b>	WB 1:500 - 1:2000. IHC 1:100 - 1:300. IF 1:200 - 1:1000. ELISA: 1:20000. Not yet tested in other applications.

<b>Purification :</b>	The antibody was affinity-purified from rabbit antiserum by affinity-chromatography using epitope-specific immunogen.
<b>Concentration :</b>	1 mg/ml
<b>Storage Stability :</b>	-15°C to -25°C/1 year(Do not lower than -25°C)
<b>Observed Band :</b>	17kD
<b>Cell Pathway :</b>	DNA replication;Mismatch repair;Homologous recombination;
<b>Background :</b>	SSBP1 is a housekeeping gene involved in mitochondrial biogenesis (Tiranti et al., 1995 [PubMed 7789991]). It is also a subunit of a single-stranded DNA (ssDNA)-binding complex involved in the maintenance of genome stability (Huang et al., 2009) [PubMed 19683501].[supplied by OMIM, Feb 2010],
<b>Function :</b>	function:This protein binds preferentially and cooperatively to ss-DNA. Probably involved in mitochondrial DNA replication.,PTM:Phosphorylated upon DNA damage, probably by ATM or ATR.,similarity:Contains 1 SSB domain.,subunit:Homotetramer.,
<b>Subcellular Location :</b>	Mitochondrion . Mitochondrion matrix, mitochondrion nucleoid .
<b>Expression :</b>	Expressed in retinal ganglion cells, photoreceptors, pigmented epithelium and fibroblasts (at protein level).

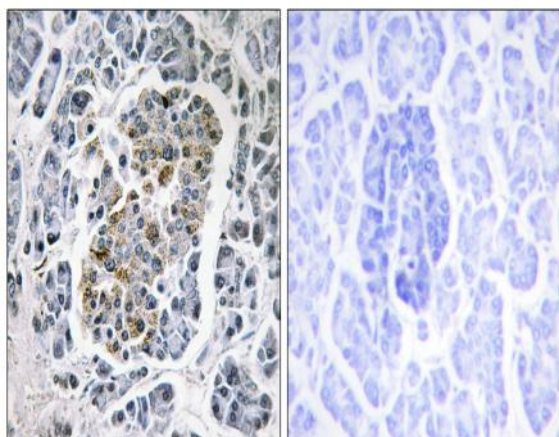
## Products Images



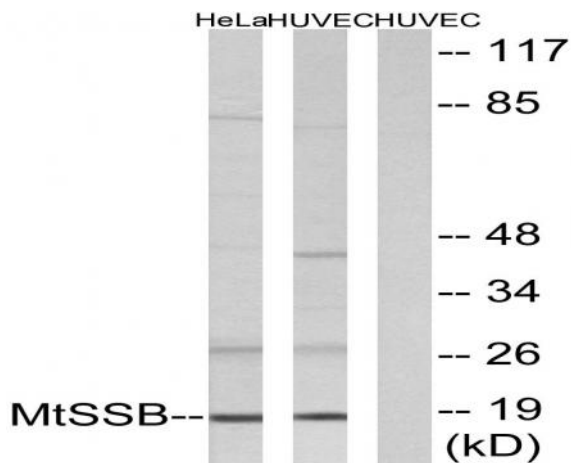
Western Blot analysis of various cells using SSBP1 Polyclonal Antibody



Immunofluorescence analysis of A549 cells, using MtSSB Antibody. The picture on the right is blocked with the synthesized peptide.



Immunohistochemistry analysis of paraffin-embedded human pancreas tissue, using MtSSB Antibody. The picture on the right is blocked with the synthesized peptide.



Western blot analysis of lysates from HUVEC and HeLa cells, using MtSSB Antibody. The lane on the right is blocked with the synthesized peptide.