

Rsu-1 Polyclonal Antibody

Catalog No :	YT4186
Reactivity :	Human;Mouse
Applications :	WB;ELISA
Target :	Rsu-1
Gene Name :	RSU1
Protein Name :	Ras suppressor protein 1
Human Gene Id :	6251
Human Swiss Prot No :	Q15404
Mouse Swiss Prot No :	Q01730
Immunogen :	The antiserum was produced against synthesized peptide derived from human RSU1. AA range:187-236
Specificity :	Rsu-1 Polyclonal Antibody detects endogenous levels of Rsu-1 protein.
Formulation :	Liquid in PBS containing 50% glycerol, 0.5% BSA and 0.02% sodium azide.
Source :	Polyclonal, Rabbit,IgG
Dilution :	WB 1:500 - 1:2000. ELISA: 1:20000. Not yet tested in other applications.
Purification :	The antibody was affinity-purified from rabbit antiserum by affinity-chromatography using epitope-specific immunogen.
Concentration :	1 mg/ml
Storage Stability :	-15°C to -25°C/1 year(Do not lower than -25°C)
Observed Band :	36kD

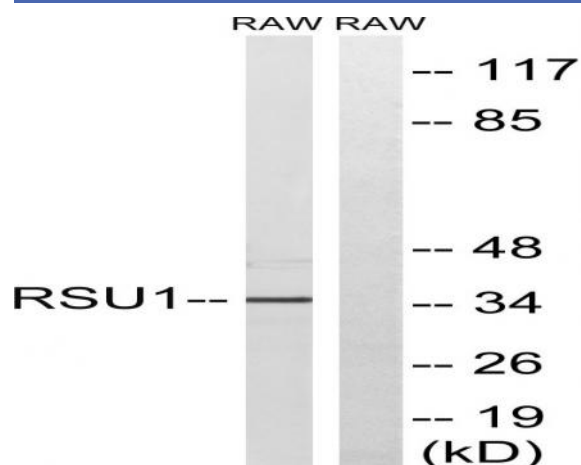
Background : This gene encodes a protein that is involved in the Ras signal transduction pathway, growth inhibition, and nerve-growth factor induced differentiation processes, as determined in mouse and human cell line studies. In mouse, the encoded protein was initially isolated based on its ability to inhibit v-Ras transformation. Multiple alternatively spliced transcript variants for this gene have been reported; one of these variants was found only in glioma tumors. [provided by RefSeq, Jul 2008],

Function : function:Potentially plays a role in the Ras signal transduction pathway. Capable of suppressing v-Ras transformation in vitro.,similarity:Contains 7 LRR (leucine-rich) repeats.,

Subcellular Location : cytosol,focal adhesion,extracellular exosome,

Expression : Adipocyte,Blood vessels- blood vessel,Brain,Eye,Platelet,Skin,Thalamus,Trachea,

Products Images



Western blot analysis of lysates from RAW264.7 cells, using RSU1 Antibody. The lane on the right is blocked with the synthesized peptide.