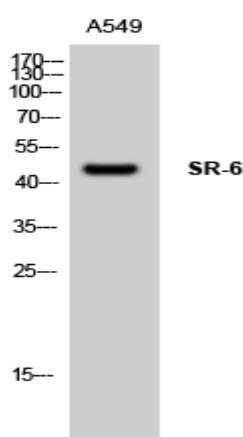


SR-6 Polyclonal Antibody

Catalog No :	YT4408
Reactivity :	Human;Mouse;Rat
Applications :	WB;ELISA
Target :	SR-6
Fields :	>>Calcium signaling pathway;>>cAMP signaling pathway;>>Neuroactive ligand-receptor interaction;>>Serotonergic synapse
Gene Name :	HTR6
Protein Name :	5-hydroxytryptamine receptor 6
Human Gene Id :	3362
Human Swiss Prot No :	P50406
Mouse Gene Id :	15565
Mouse Swiss Prot No :	Q9R1C8
Rat Gene Id :	64354
Rat Swiss Prot No :	P31388
Immunogen :	The antiserum was produced against synthesized peptide derived from human 5-HT-6. AA range:221-270
Specificity :	SR-6 Polyclonal Antibody detects endogenous levels of SR-6 protein.
Formulation :	Liquid in PBS containing 50% glycerol, 0.5% BSA and 0.02% sodium azide.
Source :	Polyclonal, Rabbit,IgG
Dilution :	WB 1:500 - 1:2000. ELISA: 1:20000. Not yet tested in other applications.

Purification :	The antibody was affinity-purified from rabbit antiserum by affinity-chromatography using epitope-specific immunogen.
Concentration :	1 mg/ml
Storage Stability :	-15°C to -25°C/1 year(Do not lower than -25°C)
Observed Band :	47kD
Cell Pathway :	Calcium;Neuroactive ligand-receptor interaction;
Background :	This gene encodes a protein that belongs to the seven-transmembrane G protein-coupled receptor family of proteins. The encoded protein couples with the Gs alpha subunit and stimulates adenylate cyclase to activate the cyclic AMP-dependent signaling pathway. This receptor is thought to regulate cholinergic neuronal transmission in the brain. Several antidepressants and antipsychotic drugs have a high affinity for this receptor. [provided by RefSeq, Aug 2013],
Function :	function:This is one of the several different receptors for 5-hydroxytryptamine (serotonin), a biogenic hormone that functions as a neurotransmitter, a hormone, and a mitogen. The activity of this receptor is mediated by G proteins that stimulate adenylate cyclase. It has a high affinity for tricyclic psychotropic drugs.,similarity:Belongs to the G-protein coupled receptor 1 family.,tissue specificity:Expressed in several human brain regions, most prominently in the caudate nucleus.,
Subcellular Location :	Cell membrane; Multi-pass membrane protein.
Expression :	Expressed in several human brain regions, most prominently in the caudate nucleus.

Products Images



Western Blot analysis of A549 cells using SR-6 Polyclonal Antibody