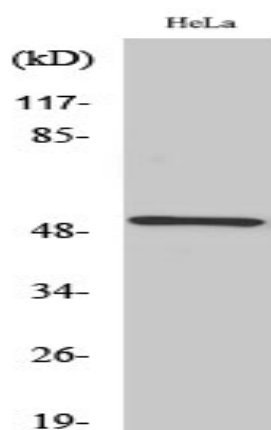


RSAD1 Polyclonal Antibody

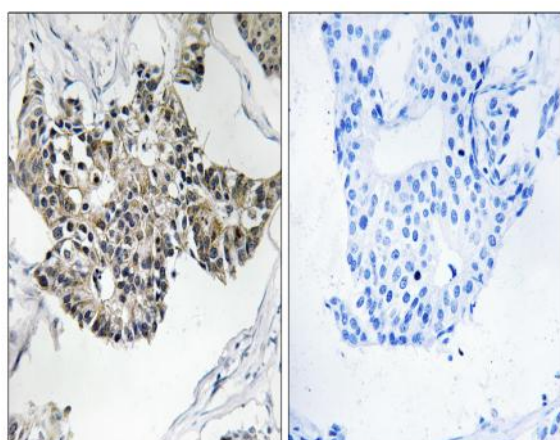
Catalog No :	YT4179
Reactivity :	Human;Mouse
Applications :	WB;IHC;IF;ELISA
Target :	RSAD1
Gene Name :	RSAD1
Protein Name :	Radical S-adenosyl methionine domain-containing protein 1 mitochondrial
Human Gene Id :	55316
Human Swiss Prot No :	Q9HA92
Mouse Gene Id :	237926
Mouse Swiss Prot No :	Q5SUV1
Immunogen :	The antiserum was produced against synthesized peptide derived from human RSAD1. AA range:298-347
Specificity :	RSAD1 Polyclonal Antibody detects endogenous levels of RSAD1 protein.
Formulation :	Liquid in PBS containing 50% glycerol, 0.5% BSA and 0.02% sodium azide.
Source :	Polyclonal, Rabbit,IgG
Dilution :	WB 1:500 - 1:2000. IHC 1:100 - 1:300. ELISA: 1:5000.. IF 1:50-200
Purification :	The antibody was affinity-purified from rabbit antiserum by affinity-chromatography using epitope-specific immunogen.
Concentration :	1 mg/ml
Storage Stability :	-15°C to -25°C/1 year(Do not lower than -25°C)

Observed Band : 52kD**Background :** cofactor: Binds 1 4Fe-4S cluster. The cluster is coordinated with 3 cysteines and an exchangeable S-adenosyl-L-methionine .,function: May be involved in porphyrin cofactor biosynthesis.,similarity: Belongs to the anaerobic coproporphyrinogen-III oxidase family.,**Function :** cofactor: Binds 1 4Fe-4S cluster. The cluster is coordinated with 3 cysteines and an exchangeable S-adenosyl-L-methionine .,function: May be involved in porphyrin cofactor biosynthesis.,similarity: Belongs to the anaerobic coproporphyrinogen-III oxidase family.,**Subcellular Location :** Mitochondrion .**Expression :** Adipose tissue, Blood, Colon, Embryo, Placenta,

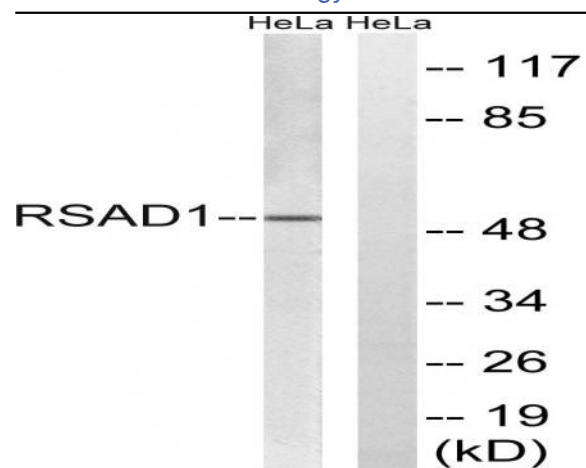
Products Images



Western Blot analysis of various cells using RSAD1 Polyclonal Antibody



Immunohistochemistry analysis of paraffin-embedded human breast carcinoma tissue, using RSAD1 Antibody. The picture on the right is blocked with the synthesized peptide.



Western blot analysis of lysates from HeLa cells, using RSAD1 Antibody. The lane on the right is blocked with the synthesized peptide.