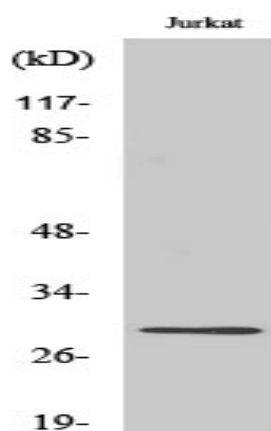


## Rim4 Polyclonal Antibody

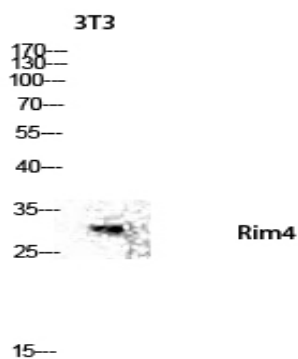
<b>Catalog No :</b>	YT4143
<b>Reactivity :</b>	Human;Mouse;Rat
<b>Applications :</b>	WB;IHC;IF;ELISA
<b>Target :</b>	Rim4
<b>Gene Name :</b>	RIMS4
<b>Protein Name :</b>	Regulating synaptic membrane exocytosis protein 4
<b>Human Gene Id :</b>	140730
<b>Human Swiss Prot No :</b>	Q9H426
<b>Mouse Gene Id :</b>	241770
<b>Mouse Swiss Prot No :</b>	P60191
<b>Rat Gene Id :</b>	266976
<b>Rat Swiss Prot No :</b>	Q8CIX1
<b>Immunogen :</b>	The antiserum was produced against synthesized peptide derived from human RIMS4. AA range:33-82
<b>Specificity :</b>	Rim4 Polyclonal Antibody detects endogenous levels of Rim4 protein.
<b>Formulation :</b>	Liquid in PBS containing 50% glycerol, 0.5% BSA and 0.02% sodium azide.
<b>Source :</b>	Polyclonal, Rabbit,IgG
<b>Dilution :</b>	WB 1:500 - 1:2000. IHC 1:100 - 1:300. ELISA: 1:20000.. IF 1:50-200
<b>Purification :</b>	The antibody was affinity-purified from rabbit antiserum by affinity-chromatography using epitope-specific immunogen.

<b>Concentration :</b>	1 mg/ml
<b>Storage Stability :</b>	-15°C to -25°C/1 year(Do not lower than -25°C)
<b>Observed Band :</b>	30kD
<b>Background :</b>	caution:Does not bind Rab-3.,function:Regulates synaptic membrane exocytosis.,PTM:Phosphorylated upon DNA damage, probably by ATM or ATR.,similarity:Contains 1 C2 domain.,subunit:Binds PPFIA3.,
<b>Function :</b>	caution:Does not bind Rab-3.,function:Regulates synaptic membrane exocytosis.,PTM:Phosphorylated upon DNA damage, probably by ATM or ATR.,similarity:Contains 1 C2 domain.,subunit:Binds PPFIA3.,
<b>Subcellular Location :</b>	Cell junction, synapse .
<b>Expression :</b>	PCR rescued clones,

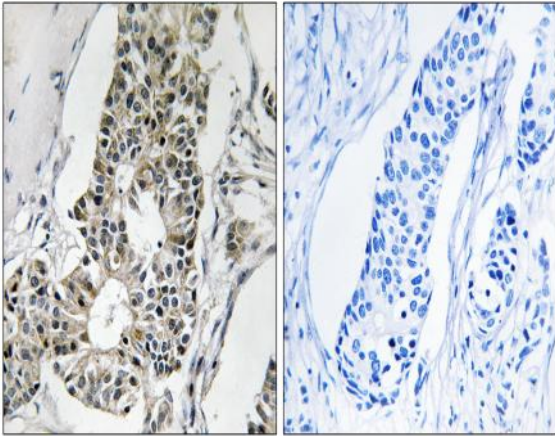
## Products Images



Western Blot analysis of various cells using Rim4 Polyclonal Antibody diluted at 1:500



Western blot analysis of 3T3 lysis using Rim4 antibody. Antibody was diluted at 1:500



Immunohistochemistry analysis of paraffin-embedded human breast carcinoma tissue, using RIMS4 Antibody. The picture on the right is blocked with the synthesized peptide.