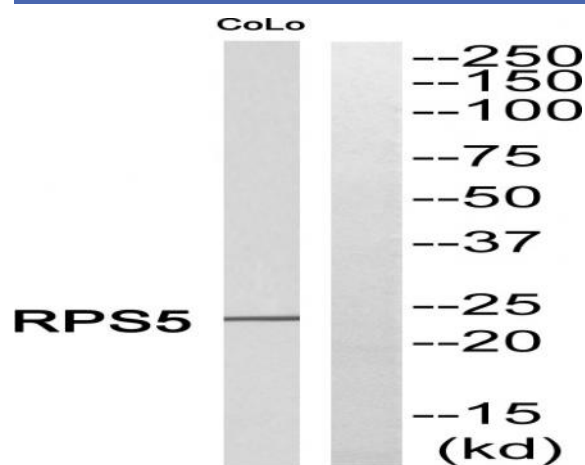


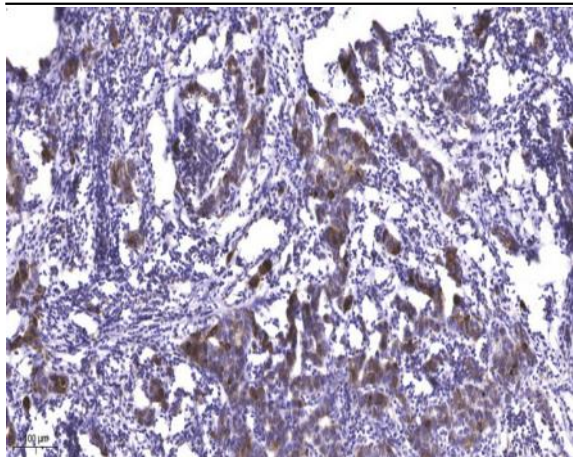
Ribosomal Protein S5 Polyclonal Antibody

Catalog No :	YT4137
Reactivity :	Human;Mouse;Rat
Applications :	WB;ELISA;IHC
Target :	Ribosomal Protein S5
Fields :	>>Ribosome;>>Coronavirus disease - COVID-19
Gene Name :	RPS5
Protein Name :	40S ribosomal protein S5
Human Gene Id :	6193
Human Swiss Prot No :	P46782
Mouse Gene Id :	20103
Mouse Swiss Prot No :	P97461
Rat Swiss Prot No :	P24050
Immunogen :	Synthesized peptide derived from Ribosomal Protein S5 . at AA range: 60-140
Specificity :	Ribosomal Protein S5 Polyclonal Antibody detects endogenous levels of Ribosomal Protein S5 protein.
Formulation :	Liquid in PBS containing 50% glycerol, 0.5% BSA and 0.02% sodium azide.
Source :	Polyclonal, Rabbit,IgG
Dilution :	WB 1:500-2000;IHC 1:50-300; ELISA 2000-20000
Purification :	The antibody was affinity-purified from rabbit antiserum by affinity-chromatography using epitope-specific immunogen.

Concentration :	1 mg/ml
Storage Stability :	-15°C to -25°C/1 year(Do not lower than -25°C)
Observed Band :	22kD
Cell Pathway :	Ribosome;
Background :	Ribosomes, the organelles that catalyze protein synthesis, consist of a small 40S subunit and a large 60S subunit. Together these subunits are composed of 4 RNA species and approximately 80 structurally distinct proteins. This gene encodes a ribosomal protein that is a component of the 40S subunit. The protein belongs to the S7P family of ribosomal proteins. It is located in the cytoplasm. Variable expression of this gene in colorectal cancers compared to adjacent normal tissues has been observed, although no correlation between the level of expression and the severity of the disease has been found. As is typical for genes encoding ribosomal proteins, there are multiple processed pseudogenes of this gene dispersed through the genome. [provided by RefSeq, Jul 2008],
Function :	similarity:Belongs to the ribosomal protein S7P family.,
Subcellular Location :	nucleoplasm,cytosol,focal adhesion,small ribosomal subunit,membrane,cytosolic small ribosomal subunit,intracellular ribonucleoprotein complex,extracellular matrix,extracellular exosome,
Expression :	B-cell lymphoma,Bone,Cervix carcinoma,Colon,Ovary,Placenta,

Products Images





Immunohistochemical analysis of paraffin-embedded human Breast cancer. 1, Antibody was diluted at 1:200(4° overnight). 2, Tris-EDTA,pH9.0 was used for antigen retrieval. 3,Secondary antibody was diluted at 1:200(room temperature, 45min).