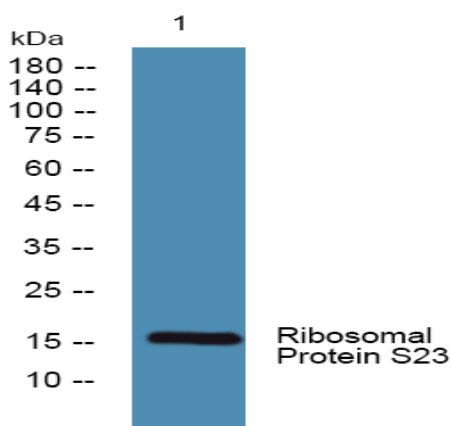


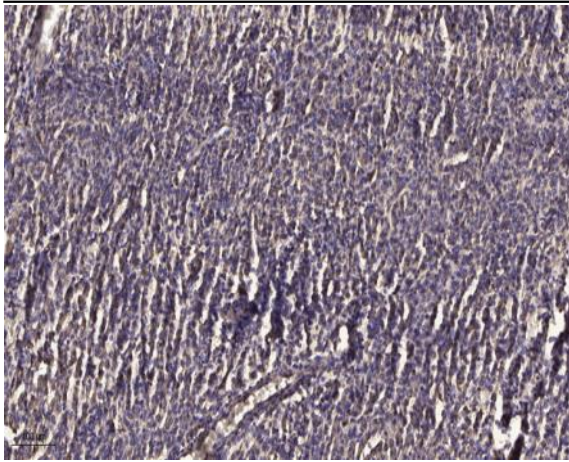
Ribosomal Protein S23 Polyclonal Antibody

Catalog No :	YT4131
Reactivity :	Human;Mouse;Rat
Applications :	WB;ELISA;IHC
Target :	Ribosomal Protein S23
Fields :	>>Ribosome;>>Coronavirus disease - COVID-19
Gene Name :	RPS23
Protein Name :	40S ribosomal protein S23
Human Gene Id :	6228
Human Swiss Prot No :	P62266
Mouse Gene Id :	66475
Mouse Swiss Prot No :	P62267
Rat Gene Id :	124323
Rat Swiss Prot No :	P62268
Immunogen :	The antiserum was produced against synthesized peptide derived from human RPS23. AA range:1-50
Specificity :	Ribosomal Protein S23 Polyclonal Antibody detects endogenous levels of Ribosomal Protein S23 protein.
Formulation :	Liquid in PBS containing 50% glycerol, 0.5% BSA and 0.02% sodium azide.
Source :	Polyclonal, Rabbit,IgG
Dilution :	WB 1:500-2000;IHC 1:50-300; ELISA 2000-20000

Purification :	The antibody was affinity-purified from rabbit antiserum by affinity-chromatography using epitope-specific immunogen.
Concentration :	1 mg/ml
Storage Stability :	-15°C to -25°C/1 year(Do not lower than -25°C)
Observed Band :	16kD
Cell Pathway :	Ribosome;
Background :	Ribosomes, the organelles that catalyze protein synthesis, consist of a small 40S subunit and a large 60S subunit. Together these subunits are composed of 4 RNA species and approximately 80 structurally distinct proteins. This gene encodes a ribosomal protein that is a component of the 40S subunit. The protein belongs to the S12P family of ribosomal proteins. It is located in the cytoplasm. The protein shares significant amino acid similarity with <i>S. cerevisiae</i> ribosomal protein S28. As is typical for genes encoding ribosomal proteins, there are multiple processed pseudogenes of this gene dispersed through the genome. [provided by RefSeq, Jul 2008],
Function :	similarity:Belongs to the ribosomal protein S12P family.,
Subcellular Location :	Cytoplasm, cytosol . Cytoplasm . Rough endoplasmic reticulum . Detected on cytosolic polysomes (PubMed:25957688). Detected in ribosomes that are associated with the rough endoplasmic reticulum (By similarity). .
Expression :	Brain,Placenta,Testis,

Products Images





Immunohistochemical analysis of paraffin-embedded human meningioma. 1, Antibody was diluted at 1:200(4° overnight). 2, Tris-EDTA,pH9.0 was used for antigen retrieval. 3,Secondary antibody was diluted at 1:200(room temperature, 45min).