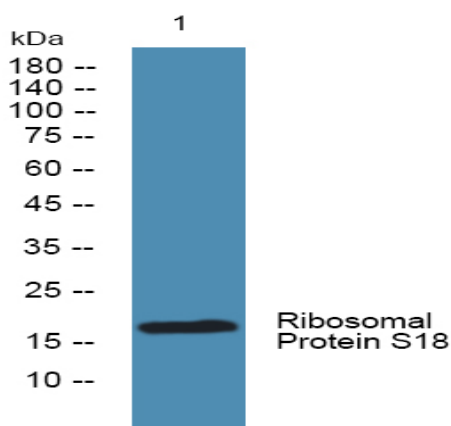


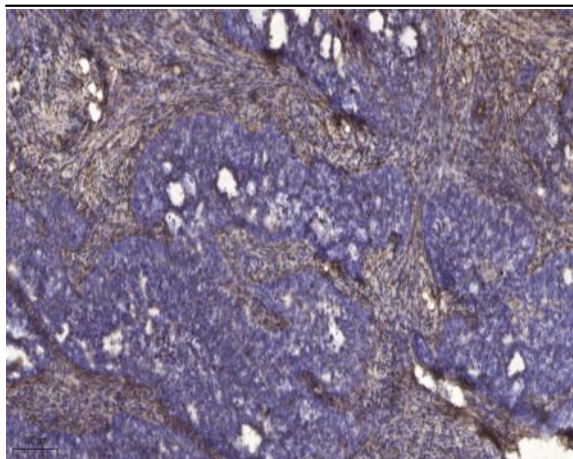
**Ribosomal Protein S18 Polyclonal Antibody**

<b>Catalog No :</b>	YT4125
<b>Reactivity :</b>	Human;Mouse;Rat
<b>Applications :</b>	WB;ELISA;IHC
<b>Target :</b>	Ribosomal Protein S18
<b>Fields :</b>	>>Ribosome;>>Coronavirus disease - COVID-19
<b>Gene Name :</b>	RPS18
<b>Protein Name :</b>	40S ribosomal protein S18
<b>Human Gene Id :</b>	6222
<b>Human Swiss Prot No :</b>	P62269
<b>Mouse Gene Id :</b>	20084
<b>Mouse Swiss Prot No :</b>	P62270
<b>Rat Gene Id :</b>	1.00361e+008
<b>Rat Swiss Prot No :</b>	P62271
<b>Immunogen :</b>	Synthesized peptide derived from Ribosomal Protein S18 . at AA range: 50-130
<b>Specificity :</b>	Ribosomal Protein S18 Polyclonal Antibody detects endogenous levels of Ribosomal Protein S18 protein.
<b>Formulation :</b>	Liquid in PBS containing 50% glycerol, 0.5% BSA and 0.02% sodium azide.
<b>Source :</b>	Polyclonal, Rabbit,IgG
<b>Dilution :</b>	WB 1:500-2000;IHC 1:50-300; ELISA 2000-20000

<b>Purification :</b>	The antibody was affinity-purified from rabbit antiserum by affinity-chromatography using epitope-specific immunogen.
<b>Concentration :</b>	1 mg/ml
<b>Storage Stability :</b>	-15°C to -25°C/1 year(Do not lower than -25°C)
<b>Observed Band :</b>	18kD
<b>Cell Pathway :</b>	Ribosome;
<b>Background :</b>	Ribosomes, the organelles that catalyze protein synthesis, consist of a small 40S subunit and a large 60S subunit. Together these subunits are composed of 4 RNA species and approximately 80 structurally distinct proteins. This gene encodes a ribosomal protein that is a component of the 40S subunit. The protein belongs to the S13P family of ribosomal proteins. It is located in the cytoplasm. The gene product of the E. coli ortholog (ribosomal protein S13) is involved in the binding of fMet-tRNA, and thus, in the initiation of translation. This gene is an ortholog of mouse Ke3. As is typical for genes encoding ribosomal proteins, there are multiple processed pseudogenes of this gene dispersed through the genome. [provided by RefSeq, Jul 2008],
<b>Function :</b>	function:Located at the top of the head of the 40S subunit, it contacts several helices of the 18S rRNA.,similarity:Belongs to the ribosomal protein S13P family.,
<b>Subcellular Location :</b>	Cytoplasm.
<b>Expression :</b>	Bone,Brain,Colon carcinoma,Embryonal rhabdomyosarcoma,Placenta,

## Products Images





Immunohistochemical analysis of paraffin-embedded human cervical carcinoma. 1, Antibody was diluted at 1:200(4° overnight). 2, Tris-EDTA,pH9.0 was used for antigen retrieval. 3,Secondary antibody was diluted at 1:200(room temperature, 45min).