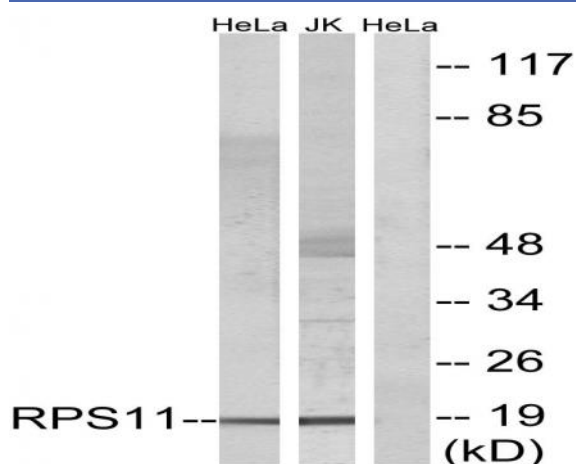


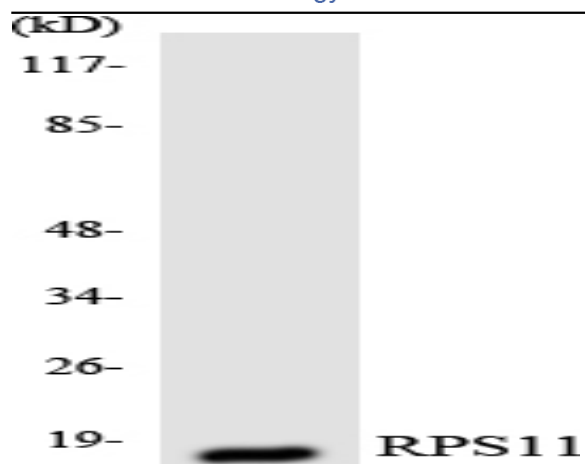
Ribosomal Protein S11 Polyclonal Antibody

Catalog No :	YT4121
Reactivity :	Human;Mouse;Rat
Applications :	WB;IHC;IF;ELISA
Target :	Ribosomal Protein S11
Fields :	>>Ribosome;>>Coronavirus disease - COVID-19
Gene Name :	RPS11
Protein Name :	40S ribosomal protein S11
Human Gene Id :	6205
Human Swiss Prot No :	P62280
Mouse Gene Id :	27207
Mouse Swiss Prot No :	P62281
Rat Gene Id :	81774
Rat Swiss Prot No :	P62282
Immunogen :	The antiserum was produced against synthesized peptide derived from human RPS11. AA range:71-120
Specificity :	Ribosomal Protein S11 Polyclonal Antibody detects endogenous levels of Ribosomal Protein S11 protein.
Formulation :	Liquid in PBS containing 50% glycerol, 0.5% BSA and 0.02% sodium azide.
Source :	Polyclonal, Rabbit,IgG
Dilution :	WB 1:500 - 1:2000. IHC 1:100 - 1:300. ELISA: 1:40000.. IF 1:50-200

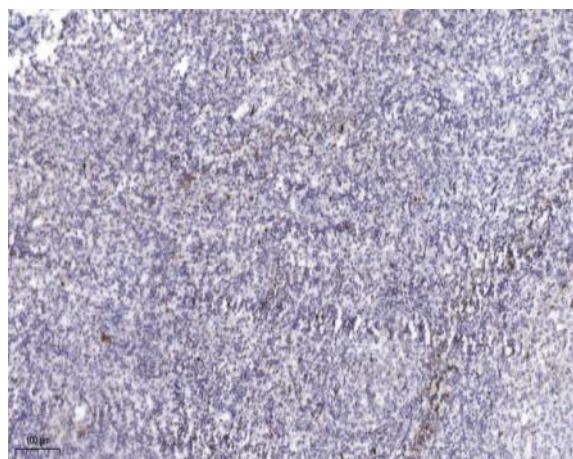
Purification :	The antibody was affinity-purified from rabbit antiserum by affinity-chromatography using epitope-specific immunogen.
Concentration :	1 mg/ml
Storage Stability :	-15°C to -25°C/1 year(Do not lower than -25°C)
Observed Band :	18kD
Cell Pathway :	Ribosome;
Background :	Ribosomes, the organelles that catalyze protein synthesis, consist of a small 40S subunit and a large 60S subunit. Together these subunits are composed of 4 RNA species and approximately 80 structurally distinct proteins. This gene encodes a member of the S17P family of ribosomal proteins that is a component of the 40S subunit. This gene is co-transcribed with the small nucleolar RNA gene U35B, which is located in the third intron. As is typical for genes encoding ribosomal proteins, there are multiple processed pseudogenes of this gene dispersed throughout the genome. [provided by RefSeq, Jul 2012],
Function :	similarity:Belongs to the ribosomal protein S17P family.,
Subcellular Location :	nucleoplasm,nucleolus,cytoplasm,cytosol,ribosome,focal adhesion,membrane,cytosolic small ribosomal subunit,extracellular matrix,extracellular exosome,
Expression :	B-cell,Eye,Lung,Placenta,Prostate,T-cell,

Products Images





Western blot analysis of the lysates from HeLa cells using RPS11 antibody.



Immunohistochemical analysis of paraffin-embedded human tonsil. 1, Antibody was diluted at 1:200(4° overnight). 2, Tris-EDTA,pH9.0 was used for antigen retrieval. 3,Secondary antibody was diluted at 1:200(room temperature, 45min).