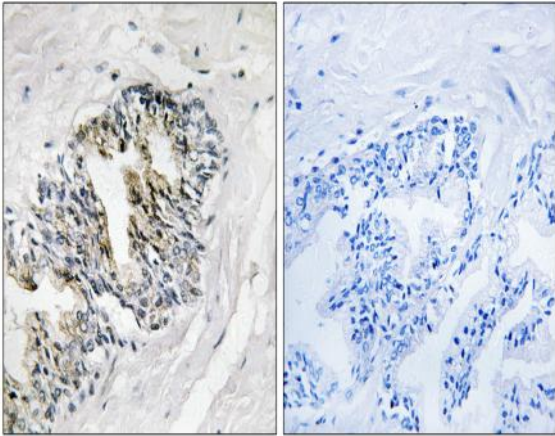


Ribosomal Protein LP2 Polyclonal Antibody

Catalog No :	YT4120
Reactivity :	Human;Mouse;Rat
Applications :	IHC;IF;ELISA
Target :	RPLP2
Fields :	>>Ribosome;>>Coronavirus disease - COVID-19
Gene Name :	RPLP2
Protein Name :	60S acidic ribosomal protein P2
Human Gene Id :	6181
Human Swiss Prot No :	P05387
Mouse Gene Id :	67186
Mouse Swiss Prot No :	P99027
Rat Gene Id :	1.00912e+008
Rat Swiss Prot No :	P02401
Immunogen :	The antiserum was produced against synthesized peptide derived from human RPLP2. AA range:21-70
Specificity :	Ribosomal Protein LP2 Polyclonal Antibody detects endogenous levels of Ribosomal Protein LP2 protein.
Formulation :	Liquid in PBS containing 50% glycerol, 0.5% BSA and 0.02% sodium azide.
Source :	Polyclonal, Rabbit,IgG
Dilution :	IHC 1:100 - 1:300. ELISA: 1:40000.. IF 1:50-200

Purification :	The antibody was affinity-purified from rabbit antiserum by affinity-chromatography using epitope-specific immunogen.
Concentration :	1 mg/ml
Storage Stability :	-15°C to -25°C/1 year(Do not lower than -25°C)
Molecularweight :	12kD
Cell Pathway :	Ribosome;
Background :	Ribosomes, the organelles that catalyze protein synthesis, consist of a small 40S subunit and a large 60S subunit. Together these subunits are composed of 4 RNA species and approximately 80 structurally distinct proteins. This gene encodes a ribosomal phosphoprotein that is a component of the 60S subunit. The protein, which is a functional equivalent of the E. coli L7/L12 ribosomal protein, belongs to the L12P family of ribosomal proteins. It plays an important role in the elongation step of protein synthesis. Unlike most ribosomal proteins, which are basic, the encoded protein is acidic. Its C-terminal end is nearly identical to the C-terminal ends of the ribosomal phosphoproteins P0 and P1. The P2 protein can interact with P0 and P1 to form a pentameric complex consisting of P1 and P2 dimers, and a P0 monomer. The protein is located in the cytoplasm. As is typical for genes
Function :	function:Plays an important role in the elongation step of protein synthesis.,similarity:Belongs to the ribosomal protein L12P family.,subunit:P1 and P2 exist as dimers at the large ribosomal subunit.,
Subcellular Location :	cytosol,ribosome,focal adhesion,membrane,cytosolic large ribosomal subunit,preribosome, large subunit precursor,extracellular exosome,
Expression :	Epithelium,Kidney,Liver,Mammary carcinoma,Ovary,Pituitary,P

Products Images



Immunohistochemistry analysis of paraffin-embedded human prostate carcinoma tissue, using RPLP2 Antibody. The picture on the right is blocked with the synthesized peptide.