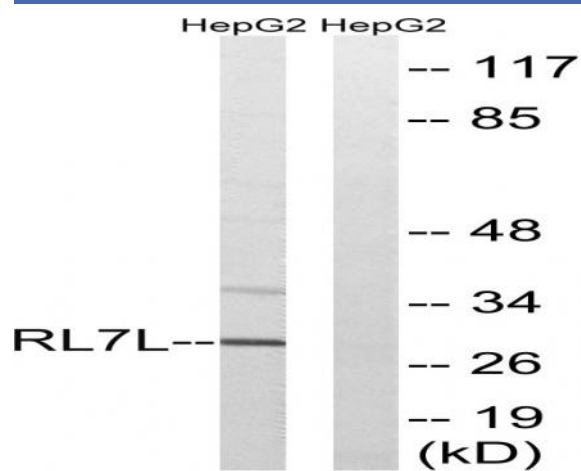


Ribosomal Protein L7L1 Polyclonal Antibody

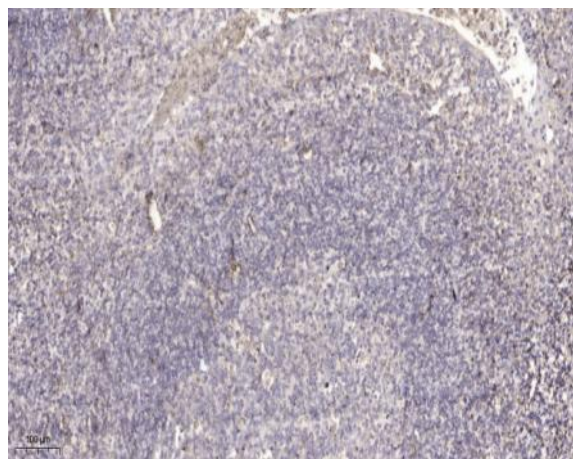
Catalog No :	YT4119
Reactivity :	Human;Mouse
Applications :	WB;IHC;IF;ELISA
Target :	Ribosomal Protein L7L1
Gene Name :	RPL7L1
Protein Name :	60S ribosomal protein L7-like 1
Human Gene Id :	285855
Human Swiss Prot No :	Q6DKI1
Mouse Swiss Prot No :	Q9D8M4
Immunogen :	The antiserum was produced against synthesized peptide derived from human RPL7L1. AA range:41-90
Specificity :	Ribosomal Protein L7L1 Polyclonal Antibody detects endogenous levels of Ribosomal Protein L7L1 protein.
Formulation :	Liquid in PBS containing 50% glycerol, 0.5% BSA and 0.02% sodium azide.
Source :	Polyclonal, Rabbit,IgG
Dilution :	WB 1:500 - 1:2000. IHC 1:100 - 1:300. ELISA: 1:40000.. IF 1:50-200
Purification :	The antibody was affinity-purified from rabbit antiserum by affinity-chromatography using epitope-specific immunogen.
Concentration :	1 mg/ml
Storage Stability :	-15°C to -25°C/1 year(Do not lower than -25°C)
Observed Band :	29kD

Background :	<u>similarity:Belongs to the ribosomal protein L30P family.,</u>
Function :	<u>similarity:Belongs to the ribosomal protein L30P family.,</u>
Subcellular Location :	<u>nucleolus,ribosome,cytosolic large ribosomal subunit,</u>
Expression :	<u>Eye,</u>

Products Images



Western blot analysis of lysates from HepG2 cells, using RPL7L1 Antibody. The lane on the right is blocked with the synthesized peptide.



Immunohistochemical analysis of paraffin-embedded human tonsil. 1, Antibody was diluted at 1:200(4° overnight). 2, Tris-EDTA,pH9.0 was used for antigen retrieval. 3,Secondary antibody was diluted at 1:200(room temperature, 45min).