

Ribosomal Protein L39L Polyclonal Antibody

Catalog No :	YT4114
Reactivity :	Human;Mouse
Applications :	IHC;IF;ELISA
Target :	Ribosomal Protein L39L
Gene Name :	RPL39L
Protein Name :	60S ribosomal protein L39-like
Human Gene Id :	116832
Human Swiss Prot No :	Q96EH5
Immunogen :	The antiserum was produced against synthesized peptide derived from human RPL39L. AA range:1-50
Specificity :	Ribosomal Protein L39L Polyclonal Antibody detects endogenous levels of Ribosomal Protein L39L protein.
Formulation :	Liquid in PBS containing 50% glycerol, 0.5% BSA and 0.02% sodium azide.
Source :	Polyclonal, Rabbit,IgG
Dilution :	IHC 1:100 - 1:300. ELISA: 1:40000.. IF 1:50-200
Purification :	The antibody was affinity-purified from rabbit antiserum by affinity-chromatography using epitope-specific immunogen.
Concentration :	1 mg/ml
Storage Stability :	-15°C to -25°C/1 year(Do not lower than -25°C)
Molecularweight :	6kD
Background :	This gene encodes a protein sharing high sequence similarity with ribosomal

protein L39. Although the name of this gene has been referred to as 'ribosomal protein L39' in the public databases, its official name is 'ribosomal protein L39-like'. It is not currently known whether the encoded protein is a functional ribosomal protein or whether it has evolved a function that is independent of the ribosome. [provided by RefSeq, Jul 2008],

Function :

similarity:Belongs to the ribosomal protein L39e family.,tissue specificity:Testis specific.,

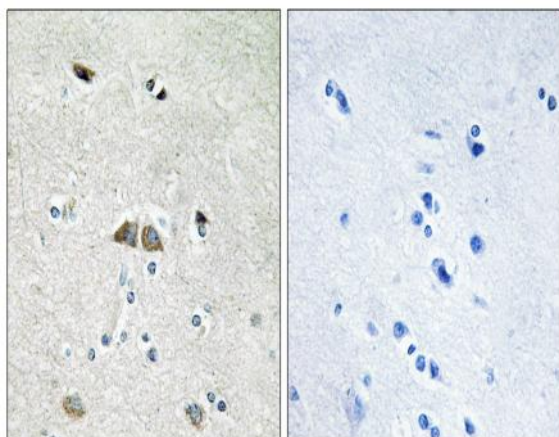
Subcellular Location :

cytosolic large ribosomal subunit,

Expression :

Testis specific.

Products Images



Immunohistochemistry analysis of paraffin-embedded human brain, using RPL39L Antibody. The picture on the right is blocked with the synthesized peptide.