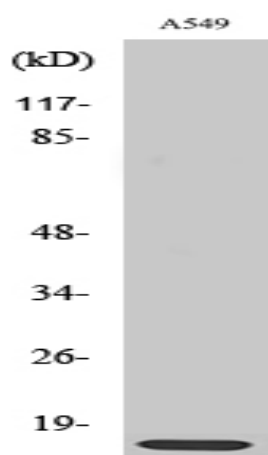


**Ribosomal Protein L30 Polyclonal Antibody**

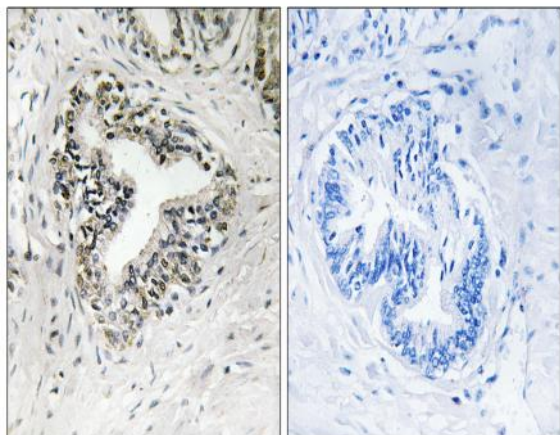
<b>Catalog No :</b>	YT4106
<b>Reactivity :</b>	Human;Mouse;Rat;Monkey
<b>Applications :</b>	WB;IHC;IF;ELISA
<b>Target :</b>	Ribosomal Protein L30
<b>Fields :</b>	>>Ribosome;>>Coronavirus disease - COVID-19
<b>Gene Name :</b>	RPL30
<b>Protein Name :</b>	60S ribosomal protein L30
<b>Human Gene Id :</b>	6156
<b>Human Swiss Prot No :</b>	P62888
<b>Mouse Gene Id :</b>	19946
<b>Mouse Swiss Prot No :</b>	P62889
<b>Rat Gene Id :</b>	1.00362e+008
<b>Rat Swiss Prot No :</b>	P62890
<b>Immunogen :</b>	The antiserum was produced against synthesized peptide derived from human RPL30. AA range:66-115
<b>Specificity :</b>	Ribosomal Protein L30 Polyclonal Antibody detects endogenous levels of Ribosomal Protein L30 protein.
<b>Formulation :</b>	Liquid in PBS containing 50% glycerol, 0.5% BSA and 0.02% sodium azide.
<b>Source :</b>	Polyclonal, Rabbit,IgG
<b>Dilution :</b>	WB 1:500 - 1:2000. IHC 1:100 - 1:300. ELISA: 1:40000.. IF 1:50-200

<b>Purification :</b>	The antibody was affinity-purified from rabbit antiserum by affinity-chromatography using epitope-specific immunogen.
<b>Concentration :</b>	1 mg/ml
<b>Storage Stability :</b>	-15°C to -25°C/1 year(Do not lower than -25°C)
<b>Observed Band :</b>	13kD
<b>Cell Pathway :</b>	Ribosome;
<b>Background :</b>	Ribosomes, the organelles that catalyze protein synthesis, consist of a small 40S subunit and a large 60S subunit. Together these subunits are composed of 4 RNA species and approximately 80 structurally distinct proteins. This gene encodes a ribosomal protein that is a component of the 60S subunit. The protein belongs to the L30E family of ribosomal proteins. It is located in the cytoplasm. This gene is co-transcribed with the U72 small nucleolar RNA gene, which is located in its fourth intron. As is typical for genes encoding ribosomal proteins, there are multiple processed pseudogenes of this gene dispersed through the genome. [provided by RefSeq, Jul 2008],
<b>Function :</b>	similarity:Belongs to the ribosomal protein L30e family.,
<b>Subcellular Location :</b>	nucleus,cytoplasm,cytosol,ribosome,focal adhesion,membrane,cytosolic large ribosomal subunit,extracellular matrix,extracellular exosome,
<b>Expression :</b>	Embryonic stem cell,Epithelium,Mammary gland,Placenta,

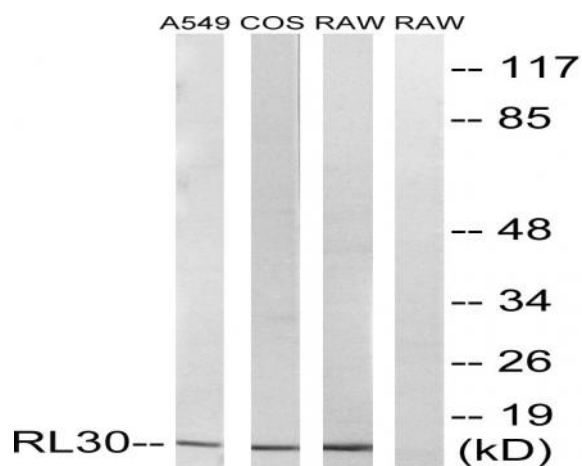
## Products Images



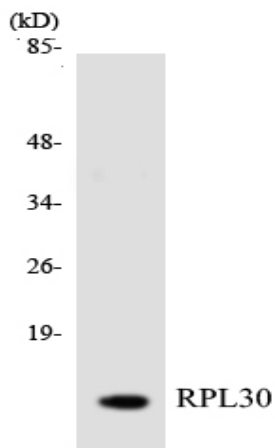
Western Blot analysis of various cells using Ribosomal Protein L30 Polyclonal Antibody diluted at 1:2000



Immunohistochemistry analysis of paraffin-embedded human prostate carcinoma tissue, using RPL30 Antibody. The picture on the right is blocked with the synthesized peptide.



Western blot analysis of lysates from A549, COS7, and RAW264.7 cells, using RPL30 Antibody. The lane on the right is blocked with the synthesized peptide.



Western blot analysis of the lysates from HT-29 cells using RPL30 antibody.