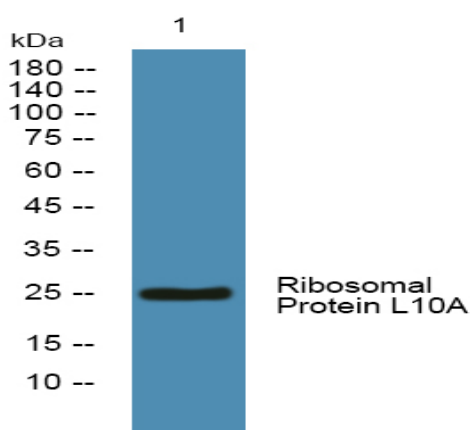


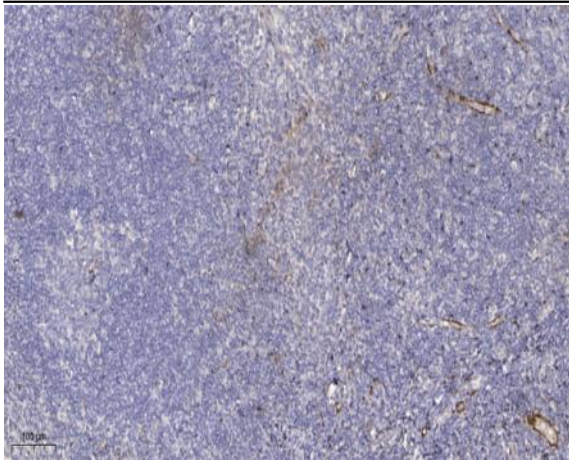
## Ribosomal Protein L10A Polyclonal Antibody

<b>Catalog No :</b>	YT4092
<b>Reactivity :</b>	Human;Mouse;Rat
<b>Applications :</b>	WB;IHC
<b>Target :</b>	Ribosomal Protein L10A
<b>Fields :</b>	>>Ribosome;>>Coronavirus disease - COVID-19
<b>Gene Name :</b>	RPL10A
<b>Protein Name :</b>	60S ribosomal protein L10a
<b>Human Gene Id :</b>	4736
<b>Human Swiss Prot No :</b>	P62906
<b>Mouse Swiss Prot No :</b>	P53026
<b>Rat Gene Id :</b>	81729
<b>Rat Swiss Prot No :</b>	P62907
<b>Immunogen :</b>	Synthesized peptide derived from Ribosomal Protein L10A . at AA range: 30-110
<b>Specificity :</b>	Ribosomal Protein L10A Polyclonal Antibody detects endogenous levels of Ribosomal Protein L10A protein.
<b>Formulation :</b>	Liquid in PBS containing 50% glycerol, 0.5% BSA and 0.02% sodium azide.
<b>Source :</b>	Polyclonal, Rabbit,IgG
<b>Dilution :</b>	WB 1:500-2000;IHC 1:50-300
<b>Purification :</b>	The antibody was affinity-purified from rabbit antiserum by affinity-chromatography using epitope-specific immunogen.

<b>Concentration :</b>	1 mg/ml
<b>Storage Stability :</b>	-15°C to -25°C/1 year(Do not lower than -25°C)
<b>Observed Band :</b>	25kD
<b>Cell Pathway :</b>	Ribosome;
<b>Background :</b>	<p>Ribosomes, the organelles that catalyze protein synthesis, consist of a small 40S subunit and a large 60S subunit. Together these subunits are composed of 4 RNA species and approximately 80 structurally distinct proteins. This gene encodes a ribosomal protein that is a component of the 60S subunit. The protein belongs to the L1P family of ribosomal proteins. It is located in the cytoplasm. The expression of this gene is downregulated in the thymus by cyclosporin-A (CsA), an immunosuppressive drug. Studies in mice have shown that the expression of the ribosomal protein L10a gene is downregulated in neural precursor cells during development. This gene previously was referred to as NEDD6 (neural precursor cell expressed, developmentally downregulated 6), but it has been renamed RPL10A (ribosomal protein 10a). As is typical for genes encoding ribosomal proteins, there are multiple processed pseudogenes</p>
<b>Function :</b>	similarity:Belongs to the ribosomal protein L1P family.,
<b>Subcellular Location :</b>	nucleus,nucleolus,cytoplasm,cytosol,ribosome,focal adhesion,large ribosomal subunit,membrane,cytosolic large ribosomal subunit,extracellular exosome,
<b>Expression :</b>	Breast,Cervix,

## Products Images





Immunohistochemical analysis of paraffin-embedded human tonsil. 1, Antibody was diluted at 1:200(4 ° overnight). 2, Tris-EDTA,pH9.0 was used for antigen retrieval. 3,Secondary antibody was diluted at 1:200(room temperature, 45min).