

Six1 Polyclonal Antibody

Catalog No :	YT4305
Reactivity :	Human;Mouse
Applications :	WB;ELISA;IHC
Target :	Six1
Fields :	>>Transcriptional misregulation in cancer
Gene Name :	SIX1
Protein Name :	Homeobox protein SIX1
Human Gene Id :	6495
Human Swiss Prot No :	Q15475
Mouse Gene Id :	20471
Mouse Swiss Prot No :	Q62231
Immunogen :	The antiserum was produced against synthesized peptide derived from human SIX1. AA range:111-160
Specificity :	Six1 Polyclonal Antibody detects endogenous levels of Six1 protein.
Formulation :	Liquid in PBS containing 50% glycerol, 0.5% BSA and 0.02% sodium azide.
Source :	Polyclonal, Rabbit,IgG
Dilution :	WB 1:500-2000;IHC 1:50-300; ELISA 2000-20000
Purification :	The antibody was affinity-purified from rabbit antiserum by affinity-chromatography using epitope-specific immunogen.
Concentration :	1 mg/ml

Storage Stability : -15°C to -25°C/1 year(Do not lower than -25°C)

Observed Band : 33kD

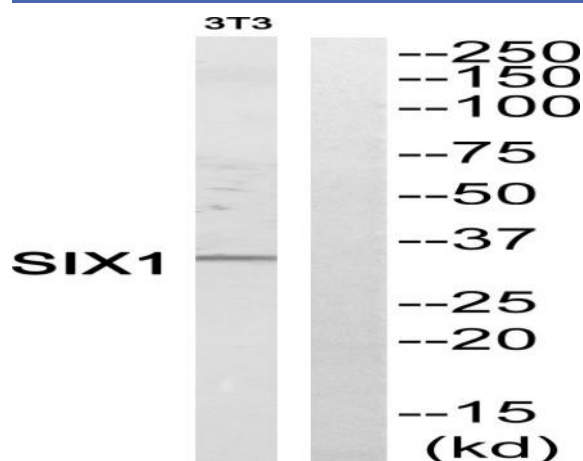
Background : The protein encoded by this gene is a homeobox protein that is similar to the *Drosophila* 'sine oculis' gene product. This gene is found in a cluster of related genes on chromosome 14 and is thought to be involved in limb development. Defects in this gene are a cause of autosomal dominant deafness type 23 (DFNA23) and branchiootic syndrome type 3 (BOS3). [provided by RefSeq, Jul 2008],

Function : disease:Defects in SIX1 are the cause of autosomal dominant deafness type 23 (DFNA23) [MIM:605192].,disease:Defects in SIX1 are the cause of branchiootic syndrome type 3 (BOS3) [MIM:608389]. Urinary tract malformations constitute the most frequent cause of chronic renal failure in the first two decades of life. Branchio-oto-renal syndrome (BOR) is an autosomal dominant developmental disorder of kidney and urinary tract malformations with hearing loss. The major feature of BOR is hearing loss (93% of patients), which can be conductive, sensorineural, or both and varies in age of onset.,function:May be involved in limb tendon and ligament development.,similarity:Belongs to the SIX/Sine oculis homeobox family.,similarity:Contains 1 homeobox DNA-binding domain.,tissue specificity:Specifically expressed in skeletal muscle.,

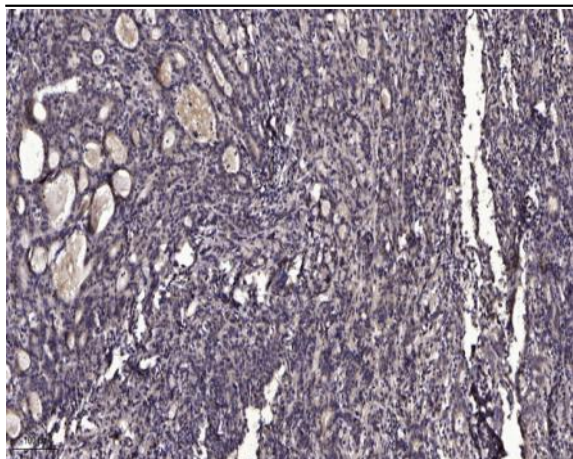
Subcellular Location : Nucleus . Cytoplasm.

Expression : Specifically expressed in skeletal muscle.

Products Images



Western blot analysis of SIX1 Antibody. The lane on the right is blocked with the SIX1 peptide.



Immunohistochemical analysis of paraffin-embedded human Gastric adenocarcinoma. 1, Antibody was diluted at 1:200(4° overnight). 2, Tris-EDTA,pH9.0 was used for antigen retrieval. 3,Secondary antibody was diluted at 1:200(room temperature, 45min).