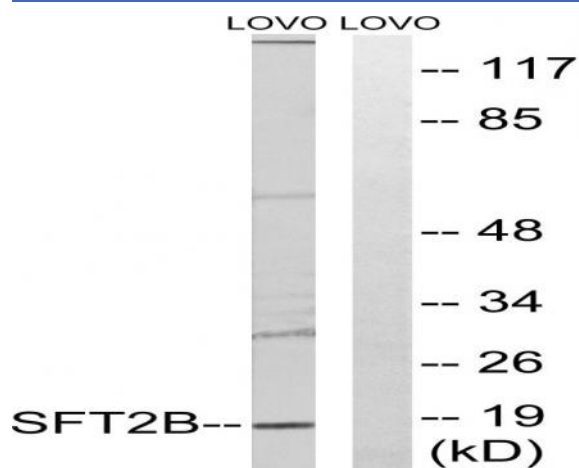


## SFT2D2 Polyclonal Antibody

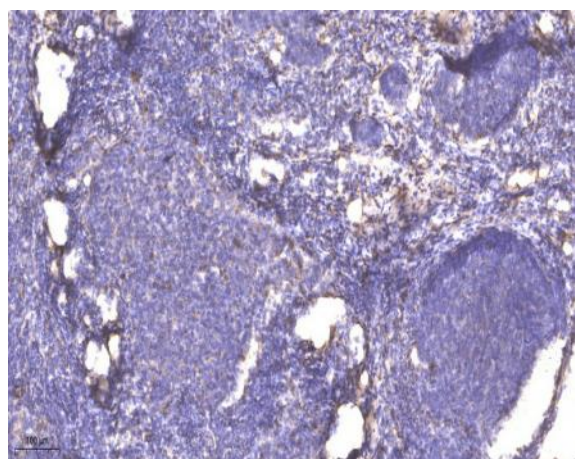
<b>Catalog No :</b>	YT4266
<b>Reactivity :</b>	Human;Mouse;Rat
<b>Applications :</b>	WB;ELISA;IHC
<b>Target :</b>	SFT2D2
<b>Gene Name :</b>	SFT2D2
<b>Protein Name :</b>	Vesicle transport protein SFT2B
<b>Human Gene Id :</b>	375035
<b>Human Swiss Prot No :</b>	O95562
<b>Mouse Gene Id :</b>	108735
<b>Mouse Swiss Prot No :</b>	Q8VD57
<b>Rat Gene Id :</b>	360868
<b>Rat Swiss Prot No :</b>	Q4FZV2
<b>Immunogen :</b>	The antiserum was produced against synthesized peptide derived from human SFT2B. AA range:61-110
<b>Specificity :</b>	SFT2D2 Polyclonal Antibody detects endogenous levels of SFT2D2 protein.
<b>Formulation :</b>	Liquid in PBS containing 50% glycerol, 0.5% BSA and 0.02% sodium azide.
<b>Source :</b>	Polyclonal, Rabbit,IgG
<b>Dilution :</b>	WB 1:500-2000;IHC 1:50-300; ELISA 2000-20000
<b>Purification :</b>	The antibody was affinity-purified from rabbit antiserum by affinity-chromatography using epitope-specific immunogen.

<b>Concentration :</b>	1 mg/ml
<b>Storage Stability :</b>	-15°C to -25°C/1 year(Do not lower than -25°C)
<b>Observed Band :</b>	18kD
<b>Background :</b>	function:May be involved in fusion of retrograde transport vesicles derived from an endocytic compartment with the Golgi complex.,similarity:Belongs to the SFT2 family.,
<b>Function :</b>	function:May be involved in fusion of retrograde transport vesicles derived from an endocytic compartment with the Golgi complex.,similarity:Belongs to the SFT2 family.,
<b>Subcellular Location :</b>	Membrane ; Multi-pass membrane protein .
<b>Expression :</b>	Lymph,

## Products Images



Western blot analysis of lysates from LOVO cells, using SFT2B Antibody. The lane on the right is blocked with the synthesized peptide.



Immunohistochemical analysis of paraffin-embedded human cervical carcinoma. 1, Antibody was diluted at 1:200(4° overnight). 2, Tris-EDTA,pH9.0 was used for antigen retrieval. 3,Secondary antibody was diluted at 1:200(room temperature, 45min).