

## ST18 Polyclonal Antibody

<b>Catalog No :</b>	YT4431
<b>Reactivity :</b>	Human;Rat;Mouse;
<b>Applications :</b>	WB;IHC;IF;ELISA
<b>Target :</b>	ST18
<b>Gene Name :</b>	ST18
<b>Protein Name :</b>	Suppression of tumorigenicity 18 protein
<b>Human Gene Id :</b>	9705
<b>Human Swiss Prot No :</b>	O60284
<b>Mouse Swiss Prot No :</b>	Q80TY4
<b>Immunogen :</b>	The antiserum was produced against synthesized peptide derived from human ZNF387. AA range:41-90
<b>Specificity :</b>	ST18 Polyclonal Antibody detects endogenous levels of ST18 protein.
<b>Formulation :</b>	Liquid in PBS containing 50% glycerol, 0.5% BSA and 0.02% sodium azide.
<b>Source :</b>	Polyclonal, Rabbit,IgG
<b>Dilution :</b>	WB 1:500 - 1:2000. IHC 1:100 - 1:300. IF 1:200 - 1:1000. ELISA: 1:40000. Not yet tested in other applications.
<b>Purification :</b>	The antibody was affinity-purified from rabbit antiserum by affinity-chromatography using epitope-specific immunogen.
<b>Concentration :</b>	1 mg/ml
<b>Storage Stability :</b>	-15°C to -25°C/1 year(Do not lower than -25°C)
<b>Observed Band :</b>	115kD

## Background :

function:Repressor that binds to DNA sequences containing a bipartite element consisting of a direct repeat of the sequence 5'-AAAGTTT-3' separated by 2-9 nucleotides. Represses basal transcription activity from target promoters (By similarity). Inhibits colony formation in cultured breast cancer cells.,similarity:Contains 6 C2HC-type zinc fingers.,tissue specificity:Detected at low levels in heart, liver, kidney, skeletal muscel, pancreas, testis, ovary and prostate. Detected at even lower levels in mammary epithelial cells and breast cancer cells.,

## Function :

function:Repressor that binds to DNA sequences containing a bipartite element consisting of a direct repeat of the sequence 5'-AAAGTTT-3' separated by 2-9 nucleotides. Represses basal transcription activity from target promoters (By similarity). Inhibits colony formation in cultured breast cancer cells.,similarity:Contains 6 C2HC-type zinc fingers.,tissue specificity:Detected at low levels in heart, liver, kidney, skeletal muscel, pancreas, testis, ovary and prostate. Detected at even lower levels in mammary epithelial cells and breast cancer cells.,

## Subcellular

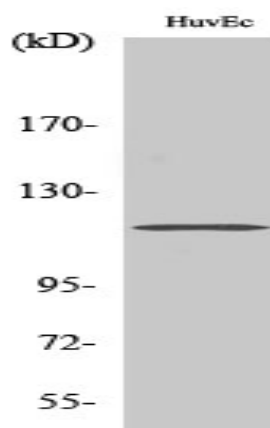
## Location :

Nucleus .

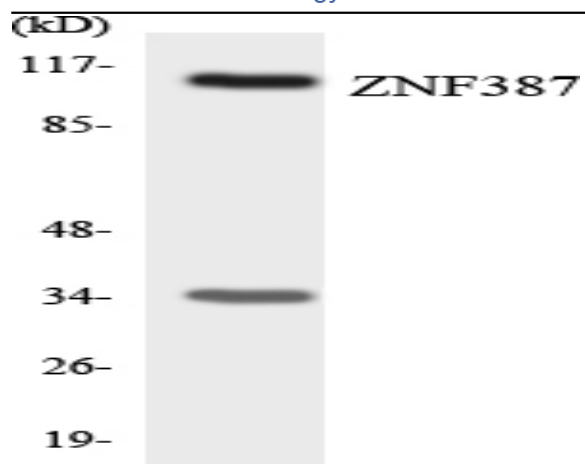
## Expression :

Detected at low levels in heart, liver, kidney, skeletal muscle, pancreas, testis, ovary and prostate. Detected at even lower levels in mammary epithelial cells and breast cancer cells.

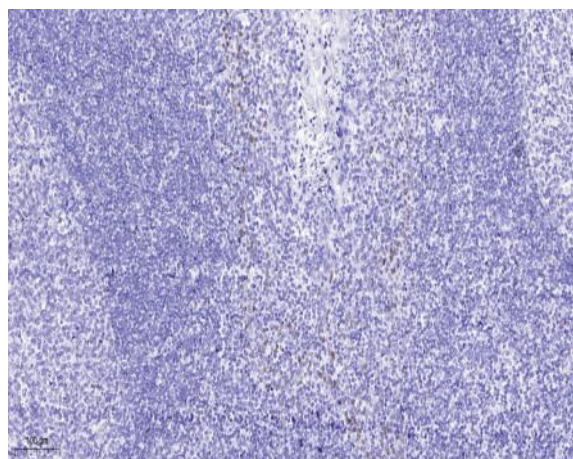
## Products Images



Western Blot analysis of various cells using ST18 Polyclonal Antibody cells nucleus extracted by Minute TM Cytoplasmic and Nuclear Fractionation kit (SC-003, Invent biotech, MN, USA).



Western blot analysis of the lysates from COLO205 cells using ZNF387 antibody.



Immunohistochemical analysis of paraffin-embedded human tonsil. 1, Antibody was diluted at 1:200 (4° overnight). 2, Tris-EDTA, pH 9.0 was used for antigen retrieval. 3, Secondary antibody was diluted at 1:200 (room temperature, 45min).