

Recoverin Polyclonal Antibody

Catalog No :	YT4037
Reactivity :	Human;Mouse
Applications :	WB;IHC;IF;ELISA
Target :	Recoverin
Fields :	>>Phototransduction
Gene Name :	RCVRN
Protein Name :	Recoverin
Human Gene Id :	5957
Human Swiss Prot No :	P35243
Mouse Gene Id :	19674
Mouse Swiss Prot No :	P34057
Immunogen :	The antiserum was produced against synthesized peptide derived from human Recoverin. AA range:107-156
Specificity :	Recoverin Polyclonal Antibody detects endogenous levels of Recoverin protein.
Formulation :	Liquid in PBS containing 50% glycerol, 0.5% BSA and 0.02% sodium azide.
Source :	Polyclonal, Rabbit,IgG
Dilution :	WB 1:500 - 1:2000. IHC 1:100 - 1:300. IF 1:200 - 1:1000. ELISA: 1:20000. Not yet tested in other applications.
Purification :	The antibody was affinity-purified from rabbit antiserum by affinity-chromatography using epitope-specific immunogen.
Concentration :	1 mg/ml

Storage Stability : -15°C to -25°C/1 year(Do not lower than -25°C)

Observed Band : 23kD

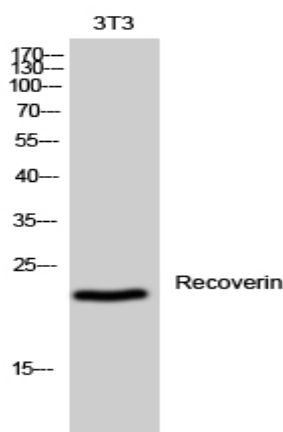
Background : This gene encodes a member of the recoverin family of neuronal calcium sensors. The encoded protein contains three calcium-binding EF-hand domains and may prolong the termination of the phototransduction cascade in the retina by blocking the phosphorylation of photo-activated rhodopsin. Recoverin may be the antigen responsible for cancer-associated retinopathy. [provided by RefSeq, Jul 2008],

Function : disease:Identified as the antigen in cancer-associated retinopathy, an autoimmune disease of the retina caused by a tumor in another tissue.,function:Seems to be implicated in the pathway from retinal rod guanylate cyclase to rhodopsin. May be involved in the inhibition of the phosphorylation of rhodopsin in a calcium-dependent manner. The calcium-bound recoverin prolongs the photoresponse.,miscellaneous:Binds two calcium ions; one with high affinity, the other with low affinity.,similarity:Belongs to the recoverin family.,similarity:Contains 4 EF-hand domains.,tissue specificity:Retina and pineal gland.,

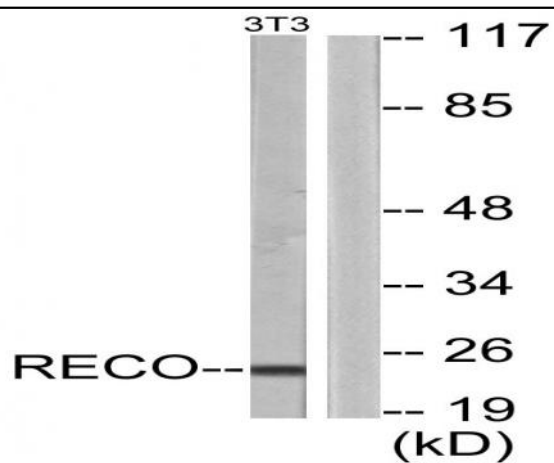
Subcellular Location : Photoreceptor inner segment . Cell projection, cilium, photoreceptor outer segment . Photoreceptor outer segment membrane ; Lipid-anchor ; Cytoplasmic side . Perikaryon . Primarily expressed in the inner segments of light-adapted rod photoreceptors, approximately 10% of which translocates from photoreceptor outer segments upon light stimulation (By similarity). Targeting of myristoylated protein to rod photoreceptor outer segments is calcium dependent (By similarity) .

Expression : Retina and pineal gland.

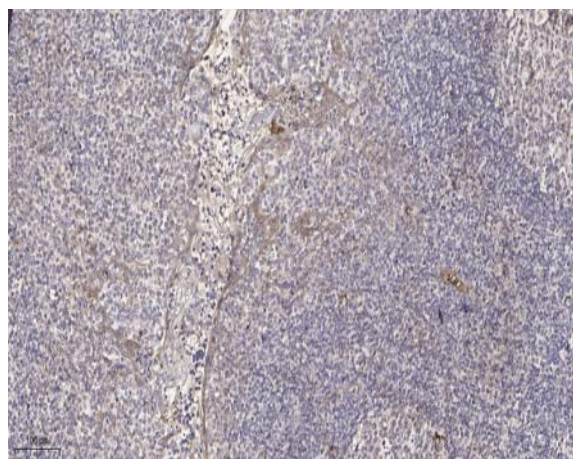
Products Images



Western Blot analysis of 3T3 cells using Recoverin Polyclonal Antibody



Western blot analysis of lysates from NIH/3T3 cells, using Recoverin Antibody. The lane on the right is blocked with the synthesized peptide.



Immunohistochemical analysis of paraffin-embedded human tonsil. 1, Antibody was diluted at 1:200(4° overnight). 2, Tris-EDTA,pH9.0 was used for antigen retrieval. 3,Secondary antibody was diluted at 1:200(room temperature, 30min).