

## RCL1 Polyclonal Antibody

<b>Catalog No :</b>	YT4033
<b>Reactivity :</b>	Human;Mouse;Rat
<b>Applications :</b>	WB;IHC
<b>Target :</b>	RCL1
<b>Fields :</b>	>>Ribosome biogenesis in eukaryotes
<b>Gene Name :</b>	RCL1
<b>Protein Name :</b>	RNA 3'-terminal phosphate cyclase-like protein
<b>Human Gene Id :</b>	10171
<b>Human Swiss Prot No :</b>	Q9Y2P8
<b>Mouse Gene Id :</b>	59028
<b>Mouse Swiss Prot No :</b>	Q9JJT0
<b>Immunogen :</b>	The antiserum was produced against synthesized peptide derived from human RCL1. AA range:324-373
<b>Specificity :</b>	RCL1 Polyclonal Antibody detects endogenous levels of RCL1 protein.
<b>Formulation :</b>	Liquid in PBS containing 50% glycerol, 0.5% BSA and 0.02% sodium azide.
<b>Source :</b>	Polyclonal, Rabbit,IgG
<b>Dilution :</b>	WB 1:500-2000;IHC 1:50-300
<b>Purification :</b>	The antibody was affinity-purified from rabbit antiserum by affinity-chromatography using epitope-specific immunogen.
<b>Concentration :</b>	1 mg/ml

**Storage Stability :** -15°C to -25°C/1 year(Do not lower than -25°C)

**Observed Band :** 41kD

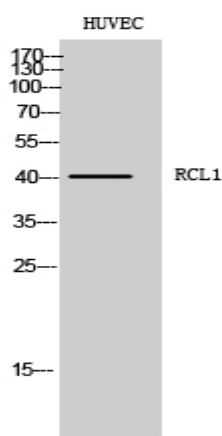
**Background :** function:Does not have cyclase activity. Plays a role in 40S-ribosomal-subunit biogenesis in the early pre-rRNA processing steps at sites A0, A1 and A2 that are required for proper maturation of the 18S RNA.,similarity:Belongs to the RNA 3'-terminal cyclase family. Type 2 subfamily.,

**Function :** function:Does not have cyclase activity. Plays a role in 40S-ribosomal-subunit biogenesis in the early pre-rRNA processing steps at sites A0, A1 and A2 that are required for proper maturation of the 18S RNA.,similarity:Belongs to the RNA 3'-terminal cyclase family. Type 2 subfamily.,

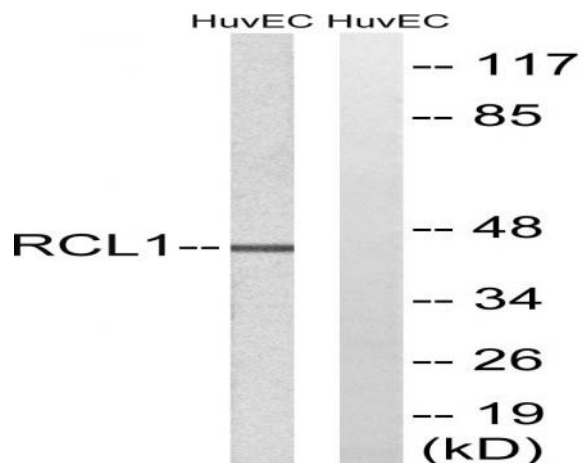
**Subcellular Location :** Nucleus, nucleolus .

**Expression :** Eye,Seminom,Umbilical cord blood,

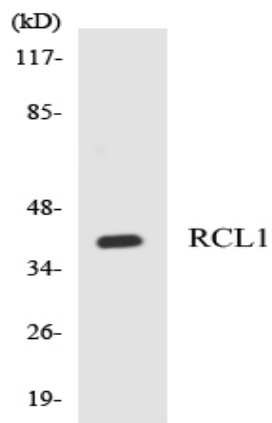
## Products Images



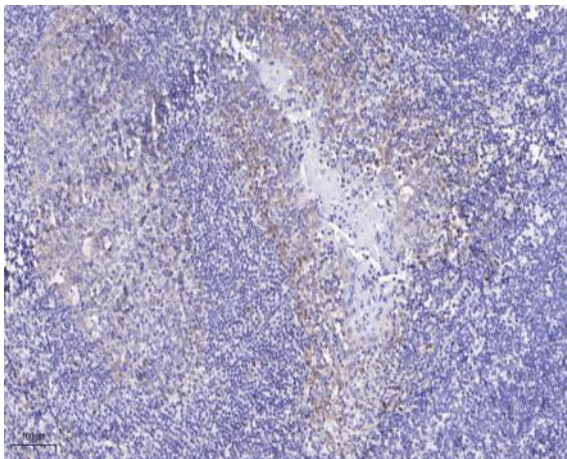
Western Blot analysis of HUVEC cells using RCL1 Polyclonal Antibody cells nucleus extracted by Minute TM Cytoplasmic and Nuclear Fractionation kit (SC-003, Inventbiotech, MN, USA).



Western blot analysis of lysates from HUVEC cells, using RCL1 Antibody. The lane on the right is blocked with the synthesized peptide.



Western blot analysis of the lysates from HepG2 cells using RCL1 antibody.



Immunohistochemical analysis of paraffin-embedded human tonsil. 1, Antibody was diluted at 1:200(4° overnight). 2, Tris-EDTA,pH9.0 was used for antigen retrieval. 3,Secondary antibody was diluted at 1:200(room temperature, 45min).