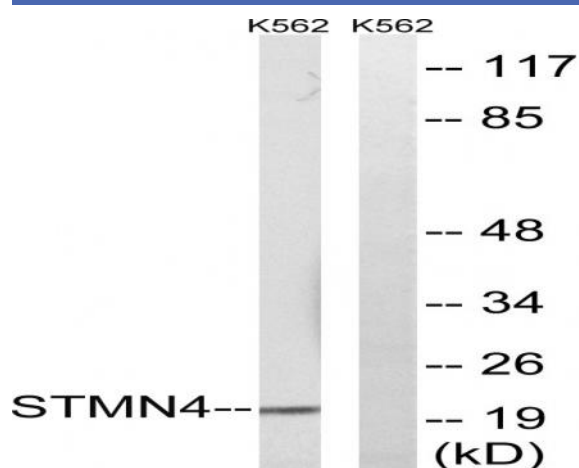


RB3 Polyclonal Antibody

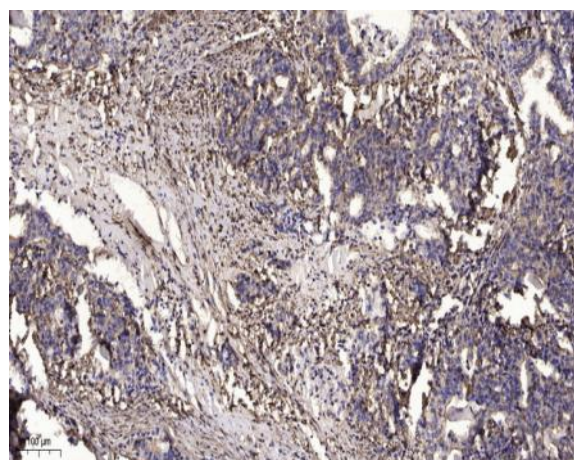
Catalog No :	YT4024
Reactivity :	Human;Mouse;Rat
Applications :	WB;IHC;IF;ELISA
Target :	RB3
Gene Name :	STMN4
Protein Name :	Stathmin-4
Human Gene Id :	81551
Human Swiss Prot No :	Q9H169
Mouse Gene Id :	56471
Mouse Swiss Prot No :	P63042
Rat Gene Id :	79423
Rat Swiss Prot No :	P63043
Immunogen :	The antiserum was produced against synthesized peptide derived from human STMN4. AA range:140-189
Specificity :	RB3 Polyclonal Antibody detects endogenous levels of RB3 protein.
Formulation :	Liquid in PBS containing 50% glycerol, 0.5% BSA and 0.02% sodium azide.
Source :	Polyclonal, Rabbit,IgG
Dilution :	WB 1:500 - 1:2000. IHC 1:100 - 1:300. ELISA: 1:40000.. IF 1:50-200
Purification :	The antibody was affinity-purified from rabbit antiserum by affinity-chromatography using epitope-specific immunogen.

Concentration :	1 mg/ml
Storage Stability :	-15°C to -25°C/1 year(Do not lower than -25°C)
Observed Band :	22kD
Cell Pathway :	Regulation of Microtubule Dynamics
Background :	similarity:Belongs to the stathmin family.,
Function :	similarity:Belongs to the stathmin family.,
Subcellular Location :	Golgi apparatus . Cell projection, growth cone . Cell projection, axon .
Expression :	Amygdala,Brain,

Products Images



Western blot analysis of lysates from K562 cells, using STMN4 Antibody. The lane on the right is blocked with the synthesized peptide.



Immunohistochemical analysis of paraffin-embedded human Gastric adenocarcinoma. 1, Antibody was diluted at 1:200(4° overnight). 2, Tris-EDTA,pH9.0 was used for antigen retrieval. 3,Secondary antibody was diluted at 1:200(room temperature, 45min).