

## SENP8 Polyclonal Antibody

<b>Catalog No :</b>	YT4242
<b>Reactivity :</b>	Human;Mouse;Rat
<b>Applications :</b>	WB;IHC;IF;ELISA
<b>Target :</b>	SENP8
<b>Gene Name :</b>	SENP8
<b>Protein Name :</b>	Sentrin-specific protease 8
<b>Human Gene Id :</b>	123228
<b>Human Swiss Prot No :</b>	Q96LD8
<b>Mouse Gene Id :</b>	71599
<b>Mouse Swiss Prot No :</b>	Q9D2Z4
<b>Rat Gene Id :</b>	315723
<b>Rat Swiss Prot No :</b>	Q5FVJ8
<b>Immunogen :</b>	The antiserum was produced against synthesized peptide derived from human SENP8. AA range:161-210
<b>Specificity :</b>	SENP8 Polyclonal Antibody detects endogenous levels of SENP8 protein.
<b>Formulation :</b>	Liquid in PBS containing 50% glycerol, 0.5% BSA and 0.02% sodium azide.
<b>Source :</b>	Polyclonal, Rabbit,IgG
<b>Dilution :</b>	WB 1:500 - 1:2000. IHC 1:100 - 1:300. ELISA: 1:10000.. IF 1:50-200
<b>Purification :</b>	The antibody was affinity-purified from rabbit antiserum by affinity-chromatography using epitope-specific immunogen.

**Concentration :** 1 mg/ml

**Storage Stability :** -15°C to -25°C/1 year(Do not lower than -25°C)

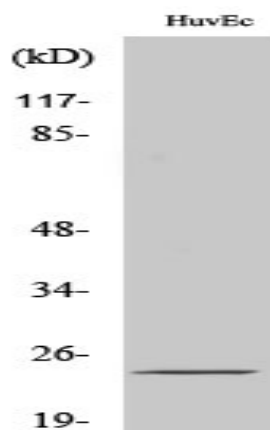
**Observed Band :** 27kD

**Background :** This gene encodes a cysteine protease that is a member of the sentrin-specific protease family. The encoded protein is involved in processing and deconjugation of the ubiquitin-like protein termed, neural precursor cell expressed developmentally downregulated 8. Alternate splicing results in multiple transcript variants.[provided by RefSeq, Oct 2009],

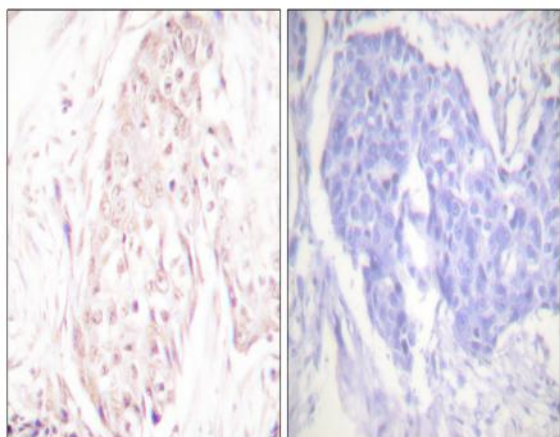
**Function :** function:Protease that catalyzes two essential functions in the NEDD8 pathway: processing of full-length NEDD8 to its mature form and deconjugation of NEDD8 from targeted proteins such as cullins or p53.,similarity:Belongs to the peptidase C48 family.,tissue specificity:Broadly expressed, with highest levels in kidney and pancreas.,

**Expression :** Broadly expressed, with highest levels in kidney and pancreas.

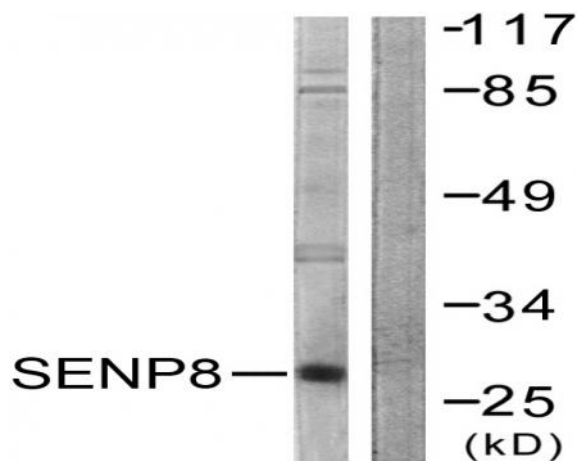
## Products Images



Western Blot analysis of various cells using SENP8 Polyclonal Antibody



Immunohistochemistry analysis of paraffin-embedded human breast carcinoma tissue, using SENP8 Antibody. The picture on the right is blocked with the synthesized peptide.



Western blot analysis of lysates from HUVEC cells, using SENP8 Antibody. The lane on the right is blocked with the synthesized peptide.