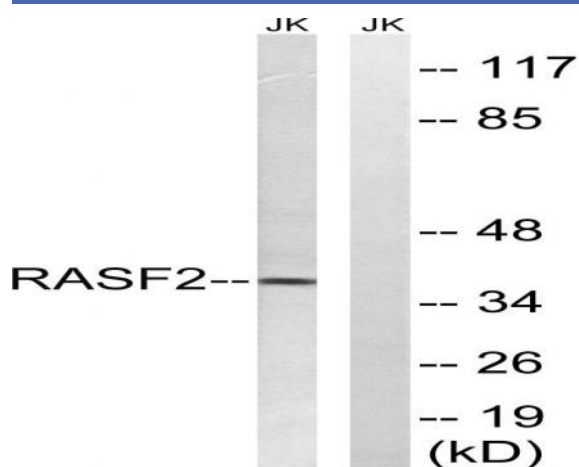


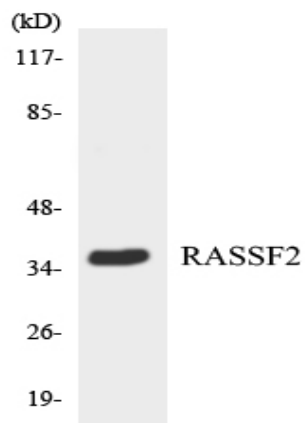
RASSF2 Polyclonal Antibody

Catalog No :	YT4011
Reactivity :	Human;Mouse;Rat
Applications :	WB;IHC
Target :	RASSF2
Fields :	>>Hippo signaling pathway - multiple species
Gene Name :	RASSF2
Protein Name :	Ras association domain-containing protein 2
Human Gene Id :	9770
Human Swiss Prot No :	P50749
Mouse Gene Id :	215653
Mouse Swiss Prot No :	Q8BMS9
Rat Gene Id :	311437
Rat Swiss Prot No :	Q3B7D5
Immunogen :	The antiserum was produced against synthesized peptide derived from human RASSF2. AA range:109-158
Specificity :	RASSF2 Polyclonal Antibody detects endogenous levels of RASSF2 protein.
Formulation :	Liquid in PBS containing 50% glycerol, 0.5% BSA and 0.02% sodium azide.
Source :	Polyclonal, Rabbit,IgG
Dilution :	WB 1:500-2000;IHC 1:50-300

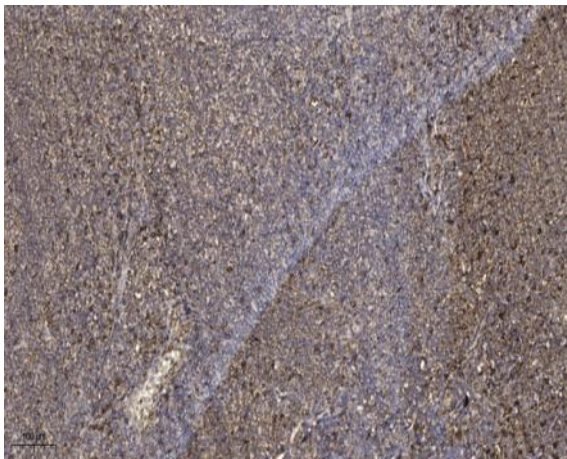
Purification :	The antibody was affinity-purified from rabbit antiserum by affinity-chromatography using epitope-specific immunogen.
Concentration :	1 mg/ml
Storage Stability :	-15°C to -25°C/1 year(Do not lower than -25°C)
Observed Band :	36kD
Background :	This gene encodes a protein that contains a Ras association domain. Similar to its cattle and sheep counterparts, this gene is located near the prion gene. Two alternatively spliced transcripts encoding the same isoform have been reported. [provided by RefSeq, Jul 2008],
Function :	function:Potential tumor suppressor. Acts as a KRAS-specific effector protein. May promote apoptosis and cell cycle arrest.,similarity:Contains 1 Ras-associating domain.,similarity:Contains 1 SARAH domain.,subunit:Interacts directly with activated KRAS in a GTP-dependent manner.,tissue specificity:Widely expressed with highest levels in brain, placenta, peripheral blood and lung. Frequently down-regulated in lung tumor cell lines.,
Subcellular Location :	Nucleus. Cytoplasm. Chromosome, centromere, kinetochore . Translocates to the cytoplasm in the presence of STK3/MST2 AND STK4/MST1.
Expression :	Widely expressed with highest levels in brain, placenta, peripheral blood and lung. Frequently down-regulated in lung tumor cell lines.

Products Images





Western blot analysis of the lysates from HepG2 cells using RASSF2 antibody.



Immunohistochemical analysis of paraffin-embedded human tonsil. 1, Antibody was diluted at 1:200(4° overnight). 2, Tris-EDTA,pH9.0 was used for antigen retrieval. 3,Secondary antibody was diluted at 1:200(room temperature, 45min).