

RASL10B Polyclonal Antibody

Catalog No :	YT4010
Reactivity :	Human;Mouse
Applications :	WB;IHC
Target :	RASL10B
Gene Name :	RASL10B
Protein Name :	Ras-like protein family member 10B
Human Gene Id :	91608
Human Swiss Prot No :	Q96S79
Mouse Gene Id :	276952
Mouse Swiss Prot No :	Q5SSG5
Immunogen :	Synthesized peptide derived from RASL10B . at AA range: 80-160
Specificity :	RASL10B Polyclonal Antibody detects endogenous levels of RASL10B protein.
Formulation :	Liquid in PBS containing 50% glycerol, 0.5% BSA and 0.02% sodium azide.
Source :	Polyclonal, Rabbit,IgG
Dilution :	WB 1:500-2000;IHC 1:50-300
Purification :	The antibody was affinity-purified from rabbit antiserum by affinity-chromatography using epitope-specific immunogen.
Concentration :	1 mg/ml
Storage Stability :	-15°C to -25°C/1 year(Do not lower than -25°C)

Observed Band : 22kD

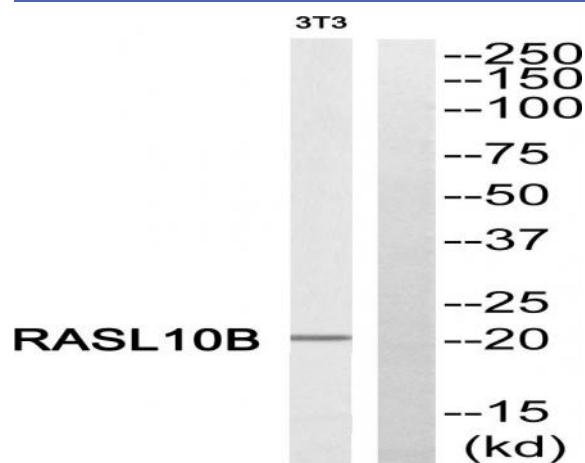
Background : similarity:Belongs to the small GTPase superfamily. Ras family.,

Function : similarity:Belongs to the small GTPase superfamily. Ras family.,

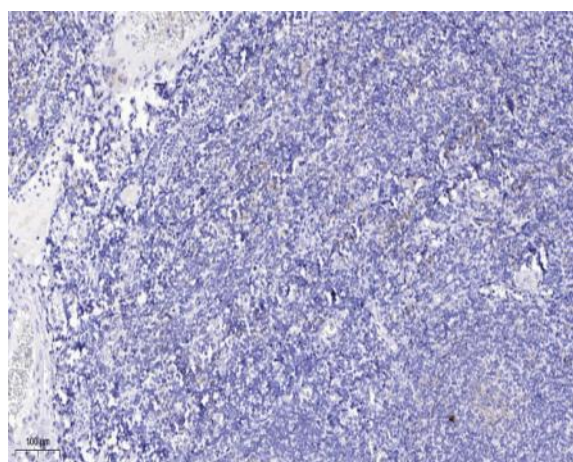
Subcellular Location : Cell membrane ; Lipid-anchor ; Cytoplasmic side .

Expression : Expressed at high levels in skeletal muscle and, at much lower levels, in heart, brain and pancreas.

Products Images



Western blot analysis of RASL10B Antibody. The lane on the right is blocked with the RASL10B peptide.



Immunohistochemical analysis of paraffin-embedded human tonsil. 1, Antibody was diluted at 1:200(4° overnight). 2, Tris-EDTA,pH9.0 was used for antigen retrieval. 3,Secondary antibody was diluted at 1:200(room temperature, 45min).