

Secretin Receptor Polyclonal Antibody

Catalog No :	YT4230
Reactivity :	Human;Rat;Mouse;
Applications :	WB;IHC;IF;ELISA
Target :	Secretin Receptor
Fields :	>>Neuroactive ligand-receptor interaction;>>Pancreatic secretion;>>Bile secretion
Gene Name :	SCTR
Protein Name :	Secretin receptor
Human Gene Id :	6344
Human Swiss Prot No :	P47872
Mouse Swiss Prot No :	Q5FWI2
Immunogen :	The antiserum was produced against synthesized peptide derived from human SCTR. AA range:100-149
Specificity :	Secretin Receptor Polyclonal Antibody detects endogenous levels of Secretin Receptor protein.
Formulation :	Liquid in PBS containing 50% glycerol, 0.5% BSA and 0.02% sodium azide.
Source :	Polyclonal, Rabbit,IgG
Dilution :	WB 1:500 - 1:2000. IHC 1:100 - 1:300. IF 1:200 - 1:1000. ELISA: 1:20000. Not yet tested in other applications.
Purification :	The antibody was affinity-purified from rabbit antiserum by affinity-chromatography using epitope-specific immunogen.
Concentration :	1 mg/ml

Storage Stability : -15°C to -25°C/1 year(Do not lower than -25°C)

Observed Band : 48kD

Cell Pathway : Neuroactive ligand-receptor interaction;

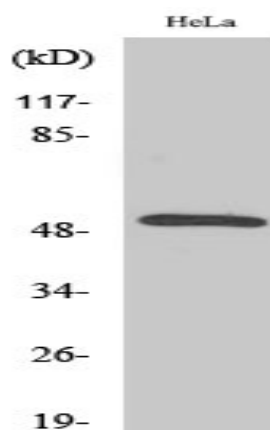
Background : secretin receptor(SCTR) Homo sapiens The protein encoded by this gene is a G protein-coupled receptor and belongs to the glucagon-VIP-secretin receptor family. It binds secretin which is the most potent regulator of pancreatic bicarbonate, electrolyte and volume secretion. Secretin and its receptor are suggested to be involved in pancreatic cancer and autism. [provided by RefSeq, Jul 2008],

Function : function:This is a receptor for secretin. The activity of this receptor is mediated by G proteins which activate adenylyl cyclase.,similarity:Belongs to the G-protein coupled receptor 2 family.,

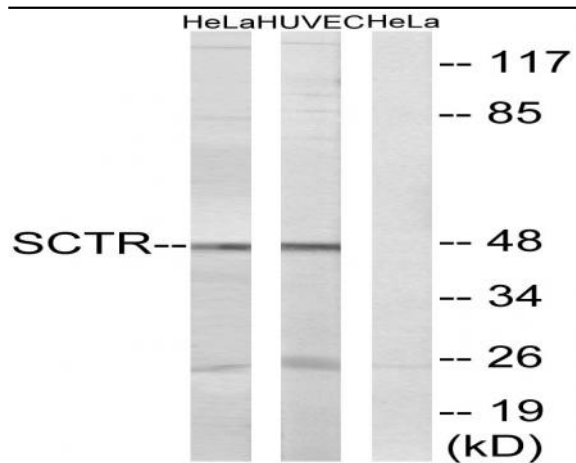
Subcellular Location : Cell membrane ; Multi-pass membrane protein .

Expression : Brain,Kidney,Lung,Pancreas,

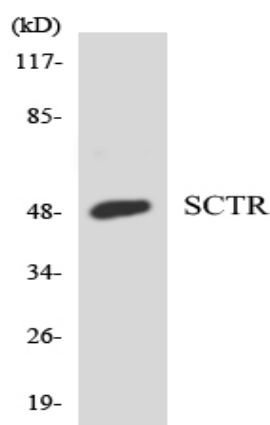
Products Images



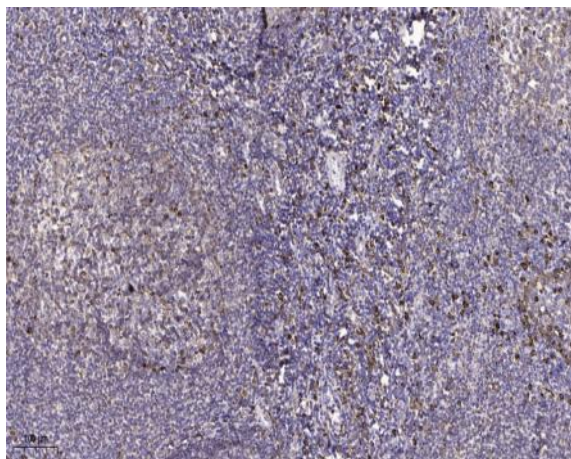
Western Blot analysis of various cells using Secretin Receptor Polyclonal Antibody diluted at 1:1000



Western blot analysis of lysates from HeLa and HUVEC cells, using SCTR Antibody. The lane on the right is blocked with the synthesized peptide.



Western blot analysis of the lysates from HeLa cells using SCTR antibody.



Immunohistochemical analysis of paraffin-embedded human tonsil. 1, Antibody was diluted at 1:200(4° overnight). 2, Tris-EDTA,pH9.0 was used for antigen retrieval. 3,Secondary antibody was diluted at 1:200(room temperature, 45min).