

## Raftlin Polyclonal Antibody

|                              |   |
|------------------------------|---|
| <b>Catalog No :</b>          | YT3989  |
| <b>Reactivity :</b>          | Human;Mouse   |
| <b>Applications :</b>        | WB;IHC  |
| <b>Target :</b>              | Raftlin   |
| <b>Gene Name :</b>           | RFTN1   |
| <b>Protein Name :</b>        | Raftlin   |
| <b>Human Gene Id :</b>       | 23180   |
| <b>Human Swiss Prot No :</b> | Q14699  |
| <b>Mouse Swiss Prot No :</b> | Q6A0D4  |
| <b>Immunogen :</b>           | The antiserum was produced against synthesized peptide derived from human RFTN1. AA range:432-481                     |
| <b>Specificity :</b>         | Raftlin Polyclonal Antibody detects endogenous levels of Raftlin protein.   |
| <b>Formulation :</b>         | Liquid in PBS containing 50% glycerol, 0.5% BSA and 0.02% sodium azide.   |
| <b>Source :</b>              | Polyclonal, Rabbit,IgG  |
| <b>Dilution :</b>            | WB 1:500-2000;IHC 1:50-300  |
| <b>Purification :</b>        | The antibody was affinity-purified from rabbit antiserum by affinity-chromatography using epitope-specific immunogen. |
| <b>Concentration :</b>       | 1 mg/ml   |
| <b>Storage Stability :</b>   | -15°C to -25°C/1 year(Do not lower than -25°C)  |
| <b>Observed Band :</b>       | 65kD  |

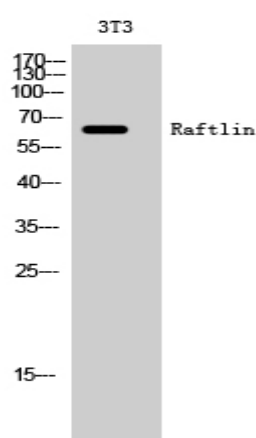
**Background :** function:May play a pivotal role in the formation and/or maintenance of lipid rafts. May regulate B-cell antigen receptor-mediated signaling.,similarity:Belongs to the raftlin family.,subcellular location:Associates with lipid rafts.,tissue specificity:Specifically expressed by B-cells (at protein level),.

**Function :** function:May play a pivotal role in the formation and/or maintenance of lipid rafts. May regulate B-cell antigen receptor-mediated signaling.,similarity:Belongs to the raftlin family.,subcellular location:Associates with lipid rafts.,tissue specificity:Specifically expressed by B-cells (at protein level),.

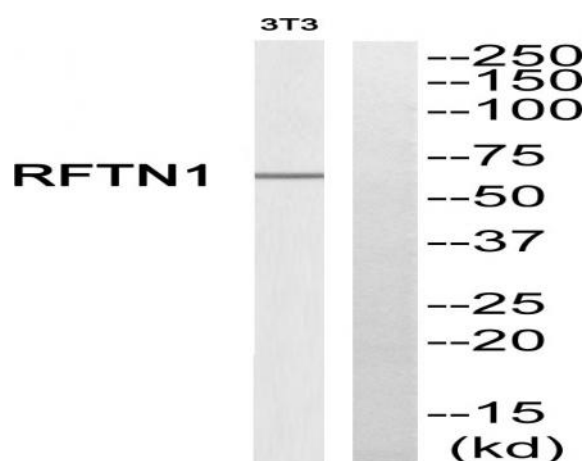
**Subcellular Location :** Cell membrane ; Lipid-anchor . Cytoplasm . Membrane raft . Endosome . Early endosome . Translocates from cytoplasm to cell membrane where it colocalizes with poly (I:C) and then moves to endosomes where it colocalizes with TLR3 (PubMed:21266579). Translocates from cytoplasm to cell membrane where it colocalizes with TLR4 and then together with TLR4 moves to endosomes, upon lipopolysaccharide stimulation (PubMed:27022195). .

**Expression :** Expressed in B-cells (at protein level) (PubMed:12805216). Expressed in dendritic cells and macrophages (PubMed:27022195, PubMed:21266579).

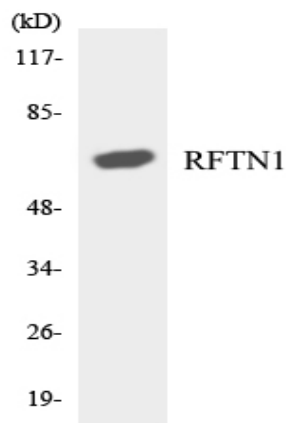
## Products Images



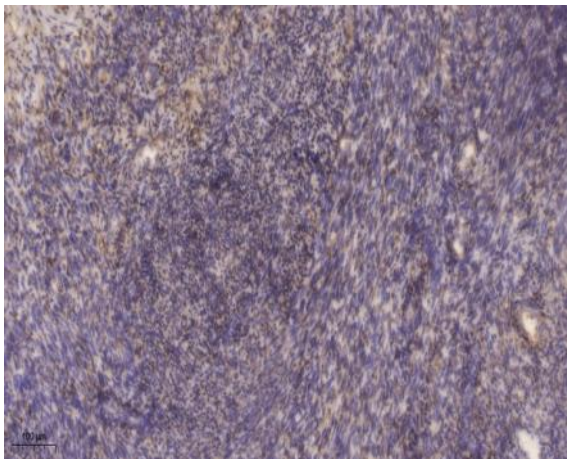
Western Blot analysis of 3T3 cells using Raftlin Polyclonal Antibody



Western blot analysis of RFTN1 Antibody. The lane on the right is blocked with the RFTN1 peptide.



Western blot analysis of the lysates from RAW264.7 cells using RFTN1 antibody.



Immunohistochemical analysis of paraffin-embedded human uterus. 1, Antibody was diluted at 1:200 (4° overnight). 2, Tris-EDTA, pH 9.0 was used for antigen retrieval. 3, Secondary antibody was diluted at 1:200 (room temperature, 45 min).