

## Rabr Polyclonal Antibody

|                              |   |
|------------------------------|---|
| <b>Catalog No :</b>          | YT3951  |
| <b>Reactivity :</b>          | Human;Mouse   |
| <b>Applications :</b>        | WB;ELISA;IHC  |
| <b>Target :</b>              | Rabr  |
| <b>Gene Name :</b>           | AGFG2   |
| <b>Protein Name :</b>        | Arf-GAP domain and FG repeat-containing protein 2   |
| <b>Human Gene Id :</b>       | 3268  |
| <b>Human Swiss Prot No :</b> | O95081  |
| <b>Mouse Gene Id :</b>       | 231801  |
| <b>Mouse Swiss Prot No :</b> | Q80WC7  |
| <b>Immunogen :</b>           | The antiserum was produced against synthesized peptide derived from human AGFG2. AA range:91-140                      |
| <b>Specificity :</b>         | Rabr Polyclonal Antibody detects endogenous levels of Rabr protein.   |
| <b>Formulation :</b>         | Liquid in PBS containing 50% glycerol, 0.5% BSA and 0.02% sodium azide.   |
| <b>Source :</b>              | Polyclonal, Rabbit,IgG  |
| <b>Dilution :</b>            | WB 1:500-2000;IHC 1:50-300; ELISA 2000-20000  |
| <b>Purification :</b>        | The antibody was affinity-purified from rabbit antiserum by affinity-chromatography using epitope-specific immunogen. |
| <b>Concentration :</b>       | 1 mg/ml   |
| <b>Storage Stability :</b>   | -15°C to -25°C/1 year(Do not lower than -25°C)  |

**Observed Band :** 49kD

**Background :** ArfGAP with FG repeats 2(AGFG2) Homo sapiens This gene is a member of the HIV-1 Rev binding protein (HRB) family and encodes a protein with one Arf-GAP zinc finger domain, several phe-gly (FG) motifs, and four asn-pro-phe (NPF) motifs. This protein interacts with Eps15 homology (EH) domains and plays a role in the Rev export pathway, which mediates the nucleocytoplasmic transfer of proteins and RNAs. Alternatively spliced transcript variants have been described, but their biological validity has not been determined. [provided by RefSeq, Feb 2013],

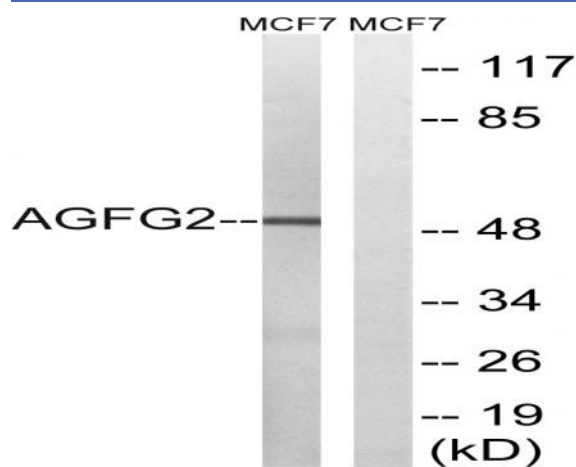
**Function :** domain:Contains FG repeats and 4 N-P-F repeats.,similarity:Contains 1 Arf-GAP domain.,subunit:Interacts with EPS15R.,

**Subcellular Location :** membrane,

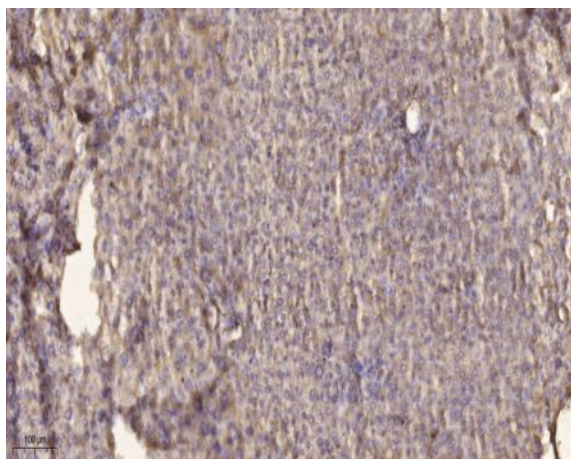
**Location :**

**Expression :** Brain,Kidney,Placenta,

## Products Images



Western blot analysis of lysates from MCF-7 cells, using AGFG2 Antibody. The lane on the right is blocked with the synthesized peptide.



Immunohistochemical analysis of paraffin-embedded human liver cancer. 1, Antibody was diluted at 1:200(4° overnight). 2, Tris-EDTA,pH9.0 was used for antigen retrieval. 3,Secondary antibody was diluted at 1:200(room temperature, 45min).