

PWWP2B Polyclonal Antibody

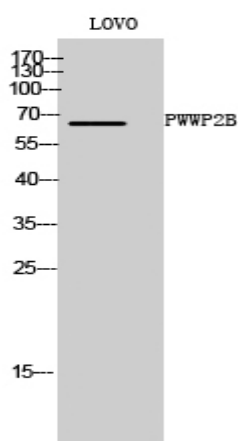
Catalog No :	YT3909
Reactivity :	Human;Mouse
Applications :	WB;IHC;IF;ELISA
Target :	PWWP2B
Gene Name :	PWWP2B
Protein Name :	PWWP domain-containing protein 2B
Human Gene Id :	170394
Human Swiss Prot No :	Q6NUJ5
Immunogen :	The antiserum was produced against synthesized peptide derived from human PWWP2B. AA range:268-317
Specificity :	PWWP2B Polyclonal Antibody detects endogenous levels of PWWP2B protein.
Formulation :	Liquid in PBS containing 50% glycerol, 0.5% BSA and 0.02% sodium azide.
Source :	Polyclonal, Rabbit,IgG
Dilution :	WB 1:500 - 1:2000. IHC 1:100 - 1:300. ELISA: 1:20000.. IF 1:50-200
Purification :	The antibody was affinity-purified from rabbit antiserum by affinity-chromatography using epitope-specific immunogen.
Concentration :	1 mg/ml
Storage Stability :	-15°C to -25°C/1 year(Do not lower than -25°C)
Observed Band :	64kD
Background :	PTM:Phosphorylated upon DNA damage, probably by ATM or ATR.,sequence caution:Translation N-terminally shortened.,similarity:Contains 1 PWWP domain.,

Function : PTM:Phosphorylated upon DNA damage, probably by ATM or ATR.,sequence caution:Translation N-terminally shortened.,similarity:Contains 1 PWWP domain.,

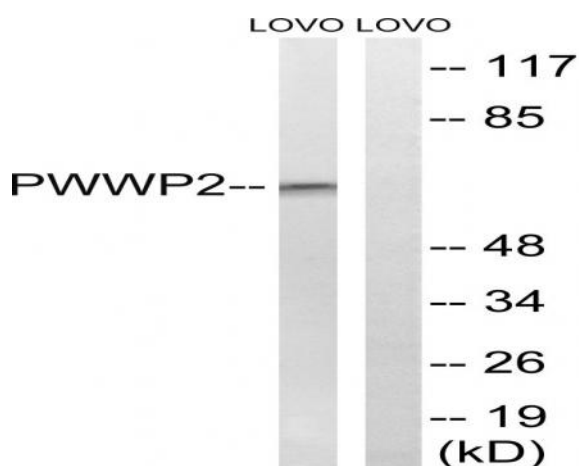
Subcellular Location : nucleoplasm,

Expression : Placenta,Uterus,

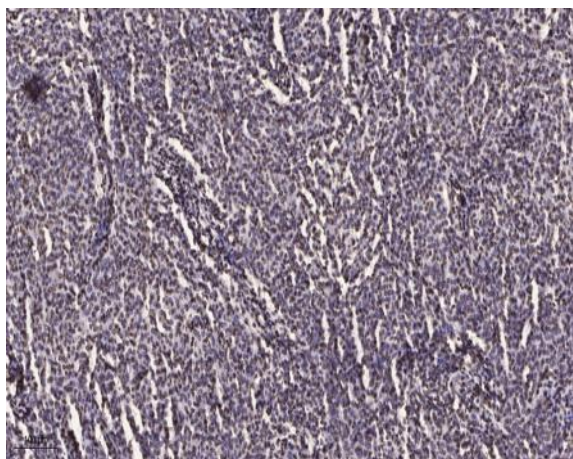
Products Images



Western Blot analysis of LOVO cells using PWWP2B Polyclonal Antibody



Western blot analysis of lysates from LOVO cells, using PWWP2B Antibody. The lane on the right is blocked with the synthesized peptide.



Immunohistochemical analysis of paraffin-embedded human brain tumor. 1, Antibody was diluted at 1:200(4° overnight). 2, Tris-EDTA,pH9.0 was used for antigen retrieval. 3,Secondary antibody was diluted at 1:200(room temperature, 45min).