

## Ptx3 Polyclonal Antibody

|                              |   |
|------------------------------|---|
| <b>Catalog No :</b>          | YT3905  |
| <b>Reactivity :</b>          | Human;Mouse   |
| <b>Applications :</b>        | WB;IHC;IF;ELISA   |
| <b>Target :</b>              | Ptx3  |
| <b>Gene Name :</b>           | PTX3  |
| <b>Protein Name :</b>        | Pentraxin-related protein PTX3  |
| <b>Human Gene Id :</b>       | 5806  |
| <b>Human Swiss Prot No :</b> | P26022  |
| <b>Mouse Gene Id :</b>       | 19288   |
| <b>Mouse Swiss Prot No :</b> | P48759  |
| <b>Immunogen :</b>           | The antiserum was produced against synthesized peptide derived from human PTX3. AA range:1-50                         |
| <b>Specificity :</b>         | Ptx3 Polyclonal Antibody detects endogenous levels of Ptx3 protein.   |
| <b>Formulation :</b>         | Liquid in PBS containing 50% glycerol, 0.5% BSA and 0.02% sodium azide.   |
| <b>Source :</b>              | Polyclonal, Rabbit,IgG  |
| <b>Dilution :</b>            | WB 1:500 - 1:2000. IHC 1:100 - 1:300. IF 1:200 - 1:1000. ELISA: 1:10000. Not yet tested in other applications.        |
| <b>Purification :</b>        | The antibody was affinity-purified from rabbit antiserum by affinity-chromatography using epitope-specific immunogen. |
| <b>Concentration :</b>       | 1 mg/ml   |
| <b>Storage Stability :</b>   | -15°C to -25°C/1 year(Do not lower than -25°C)  |

**Observed Band :** 40kD

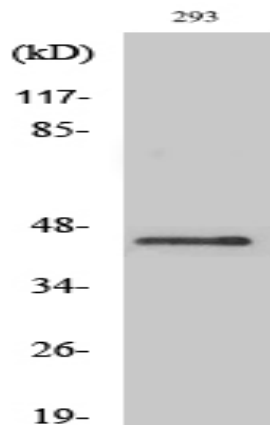
**Background :** This gene encodes a member of the pentraxin protein family. The expression of this protein is induced by inflammatory cytokines in response to inflammatory stimuli in several mesenchymal and epithelial cell types, particularly endothelial cells and mononuclear phagocytes. The protein promotes fibrocyte differentiation and is involved in regulating inflammation and complement activation. It also plays a role in angiogenesis and tissue remodeling. The protein serves as a biomarker for several inflammatory conditions. [provided by RefSeq, Jun 2016],

**Function :** function:Plays a role in the regulation of innate resistance to pathogens, inflammatory reactions, possibly clearance of self-components and female fertility.,induction:By interleukin-1 beta and TNF-alpha.,PTM:Glycosylated.,similarity:Contains 1 pentaxin domain.,subunit:Homooctamer; disulfide-linked. Binds to C1q.,

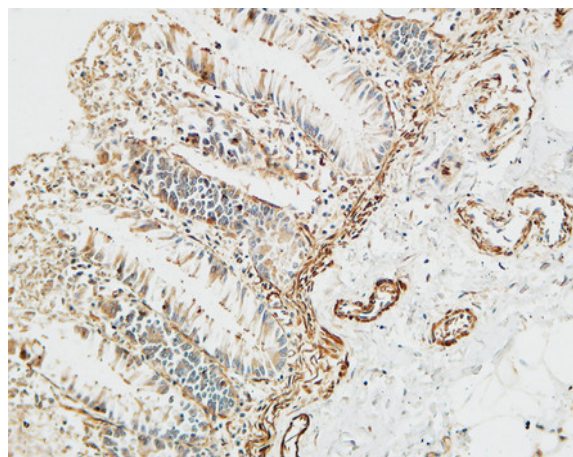
**Subcellular Location :** Secreted.

**Expression :** Brain,Endothelial cell,Foreskin,

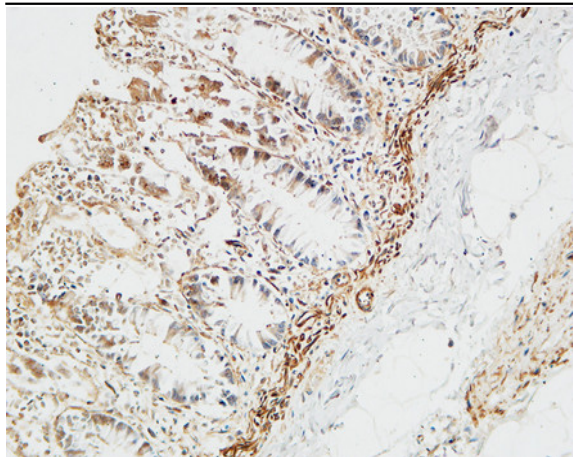
## Products Images



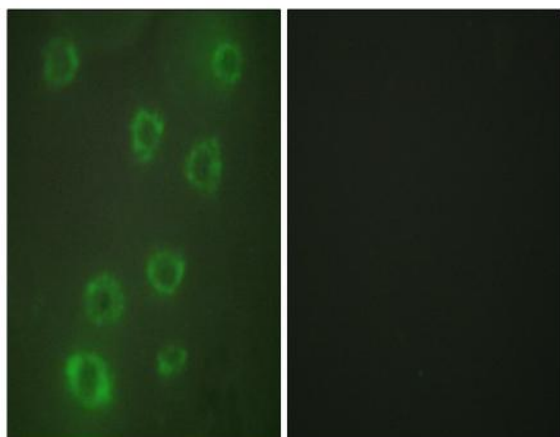
Western Blot analysis of various cells using Ptx3 Polyclonal Antibody diluted at 1:1000



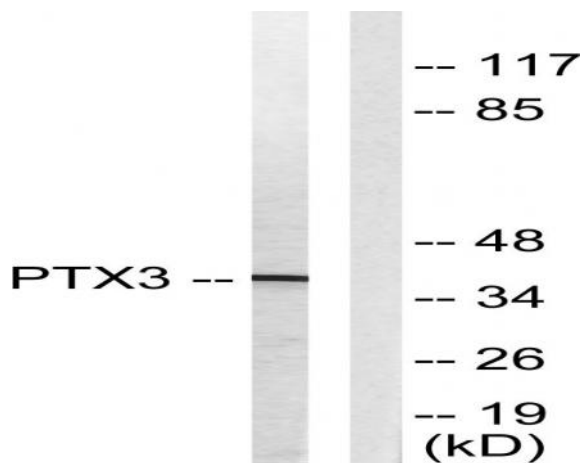
Immunohistochemical analysis of paraffin-embedded Human colon. 1, Antibody was diluted at 1:100(4° overnight). 2, High-pressure and temperature EDTA, pH8.0 was used for antigen retrieval. 3,Secondary antibody was diluted at 1:200(room temperature, 30min).



Immunohistochemical analysis of paraffin-embedded Human colon. 1, Antibody was diluted at 1:100(4° overnight). 2, High-pressure and temperature EDTA, pH8.0 was used for antigen retrieval. 3,Secondary antibody was diluted at 1:200(room temperature, 30min).

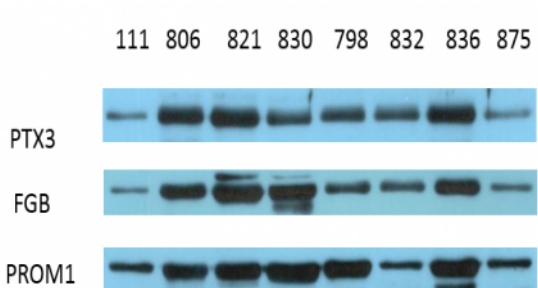


Immunofluorescence analysis of HUVEC cells, using PTX3 Antibody. The picture on the right is blocked with the synthesized peptide.



Western blot analysis of lysates from 293 cells, using PTX3 Antibody. The lane on the right is blocked with the synthesized peptide.

The picture was kindly provided by our customer



Western Blot analysis of various cells. The picture was provided by our customer.

PTX3 Immunoway, YT3905, 1:2000, 40kD  
FGB Immunoway, YT1706, 1:2000, 55kD  
PROM1 Immunoway, YT5192, 1:5000, 100kD