

PRSS33 Polyclonal Antibody

Catalog No :	YT3871
Reactivity :	Human;Mouse
Applications :	WB;IHC;IF;ELISA
Target :	PRSS33
Gene Name :	PRSS33
Protein Name :	Serine protease 33
Human Gene Id :	260429
Human Swiss Prot No :	Q8NF86
Mouse Swiss Prot No :	Q80WM7
Immunogen :	The antiserum was produced against synthesized peptide derived from human PRSS33. AA range:18-67
Specificity :	PRSS33 Polyclonal Antibody detects endogenous levels of PRSS33 protein.
Formulation :	Liquid in PBS containing 50% glycerol, 0.5% BSA and 0.02% sodium azide.
Source :	Polyclonal, Rabbit,IgG
Dilution :	WB 1:500 - 1:2000. IHC 1:100 - 1:300. ELISA: 1:10000.. IF 1:50-200
Purification :	The antibody was affinity-purified from rabbit antiserum by affinity-chromatography using epitope-specific immunogen.
Concentration :	1 mg/ml
Storage Stability :	-15°C to -25°C/1 year(Do not lower than -25°C)
Observed Band :	26kD

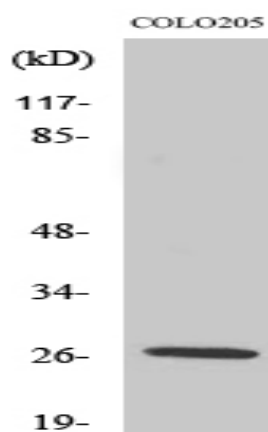
Background : function:Serine protease that has amidolytic activity, cleaving its substrates before Arg residues.,induction:Up-regulated by phorbol ester PMA.,similarity:Belongs to the peptidase S1 family.,similarity:Contains 1 peptidase S1 domain.,tissue specificity:Predominantly expressed in macrophages. Present in the spleen, small and large intestine, lung and brain (at protein level). Highly expressed in peripheral leukocytes, ovary, retina, spleen and stomach. Moderately expressed in thymus, uterus and platelets, as well as some brain tissues, such as thalamus and fetal brain.,

Function : function:Serine protease that has amidolytic activity, cleaving its substrates before Arg residues.,induction:Up-regulated by phorbol ester PMA.,similarity:Belongs to the peptidase S1 family.,similarity:Contains 1 peptidase S1 domain.,tissue specificity:Predominantly expressed in macrophages. Present in the spleen, small and large intestine, lung and brain (at protein level). Highly expressed in peripheral leukocytes, ovary, retina, spleen and stomach. Moderately expressed in thymus, uterus and platelets, as well as some brain tissues, such as thalamus and fetal brain.,

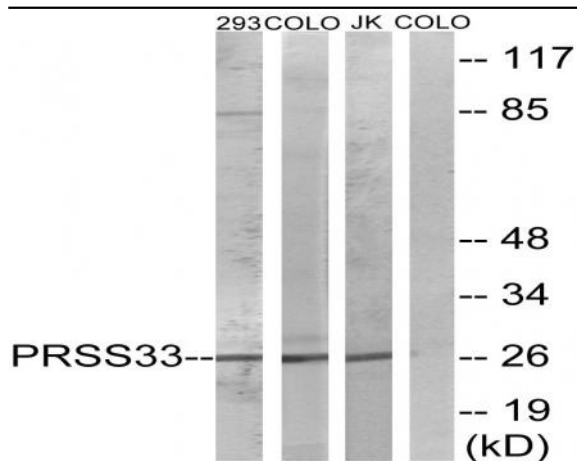
Subcellular Location : Secreted .

Expression : Predominantly expressed in macrophages. Present in the spleen, small and large intestine, lung and brain (at protein level). Highly expressed in peripheral leukocytes, ovary, retina, spleen and stomach. Moderately expressed in thymus, uterus and platelets, as well as some brain tissues, such as thalamus and fetal brain.

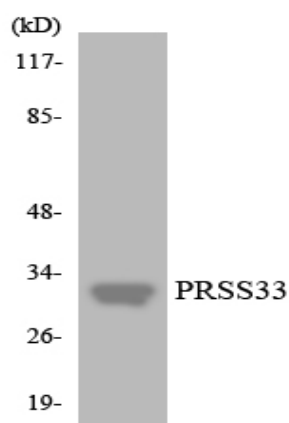
Products Images



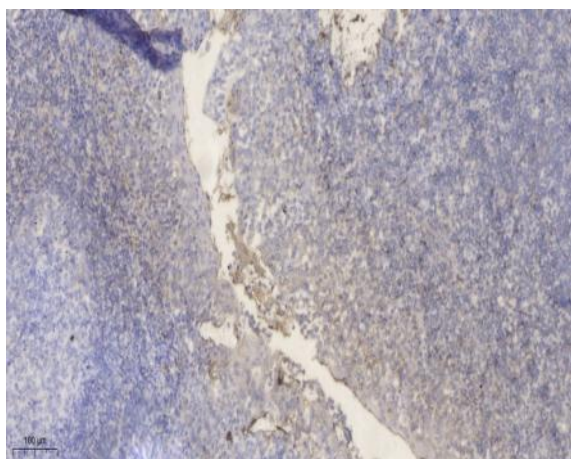
Western Blot analysis of various cells using PRSS33 Polyclonal Antibody



Western blot analysis of lysates from COLO, 293, and Jurkat cells, using PRSS33 Antibody. The lane on the right is blocked with the synthesized peptide.



Western blot analysis of the lysates from HT-29 cells using PRSS33 antibody.



Immunohistochemical analysis of paraffin-embedded human tonsil. 1, Antibody was diluted at 1:200(4° overnight). 2, Tris-EDTA,pH9.0 was used for antigen retrieval. 3,Secondary antibody was diluted at 1:200(room temperature, 30min).