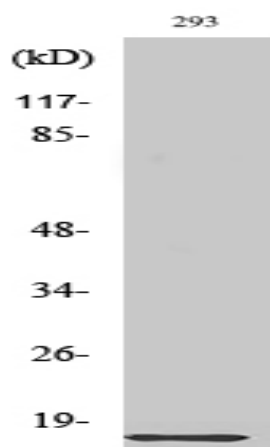


Ribosomal Protein L35 Polyclonal Antibody

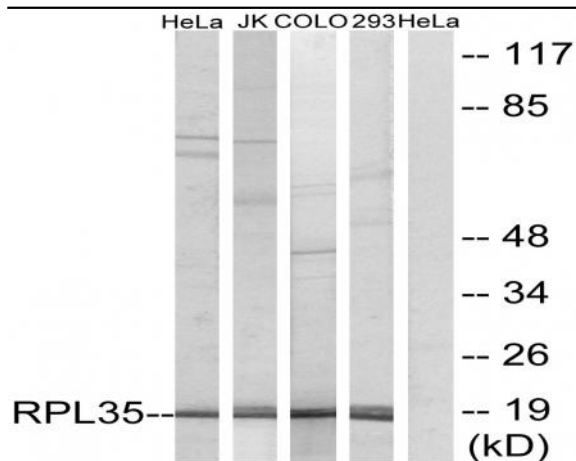
Catalog No :	YT4109
Reactivity :	Human;Mouse;Rat
Applications :	WB;IHC;IF;ELISA
Target :	Ribosomal Protein L35
Fields :	>>Ribosome;>>Coronavirus disease - COVID-19
Gene Name :	RPL35
Protein Name :	60S ribosomal protein L35
Human Gene Id :	11224
Human Swiss Prot No :	P42766
Mouse Gene Id :	66489
Mouse Swiss Prot No :	Q6Z WV7
Rat Gene Id :	296709
Rat Swiss Prot No :	P17078
Immunogen :	The antiserum was produced against synthesized peptide derived from human RPL35. AA range:51-100
Specificity :	Ribosomal Protein L35 Polyclonal Antibody detects endogenous levels of Ribosomal Protein L35 protein.
Formulation :	Liquid in PBS containing 50% glycerol, 0.5% BSA and 0.02% sodium azide.
Source :	Polyclonal, Rabbit,IgG
Dilution :	WB 1:500 - 1:2000. IHC 1:100 - 1:300. ELISA: 1:10000.. IF 1:50-200

Purification :	The antibody was affinity-purified from rabbit antiserum by affinity-chromatography using epitope-specific immunogen.
Concentration :	1 mg/ml
Storage Stability :	-15°C to -25°C/1 year(Do not lower than -25°C)
Observed Band :	18kD
Cell Pathway :	Ribosome;
Background :	Ribosomes, the organelles that catalyze protein synthesis, consist of a small 40S subunit and a large 60S subunit. Together these subunits are composed of 4 RNA species and approximately 80 structurally distinct proteins. This gene encodes a ribosomal protein that is a component of the 60S subunit. The protein belongs to the L29P family of ribosomal proteins. It is located in the cytoplasm. As is typical for genes encoding ribosomal proteins, there are multiple processed pseudogenes of this gene dispersed through the genome. [provided by RefSeq, Jul 2008],
Function :	similarity:Belongs to the ribosomal protein L29P family.,
Subcellular Location :	nucleolus,cytoplasm,cytosol,ribosome,membrane,cytosolic large ribosomal subunit,
Expression :	Brain,Lung,Muscle,Prostate,

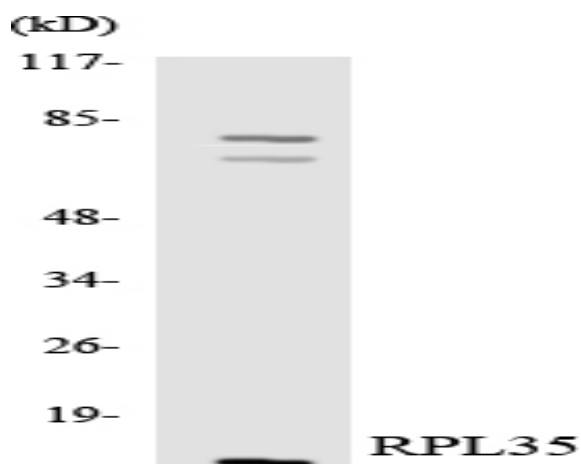
Products Images



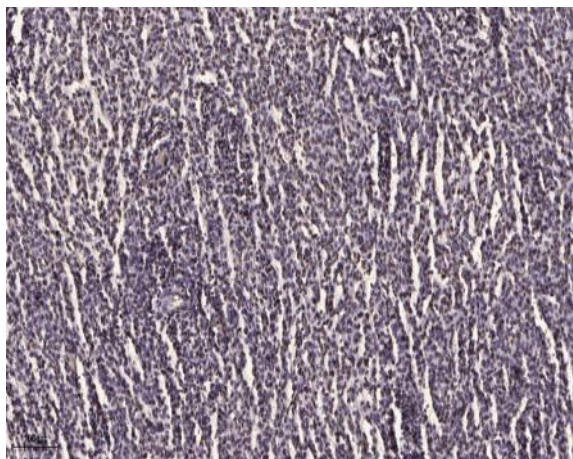
Western Blot analysis of various cells using Ribosomal Protein L35 Polyclonal Antibody diluted at 1:2000



Western blot analysis of lysates from 293, HeLa, COLO, and Jurkat cells, using RPL35 Antibody. The lane on the right is blocked with the synthesized peptide.



Western blot analysis of the lysates from HeLa cells using RPL35 antibody.



Immunohistochemical analysis of paraffin-embedded human brain tumor. 1, Antibody was diluted at 1:200(4° overnight). 2, Tris-EDTA,pH9.0 was used for antigen retrieval. 3,Secondary antibody was diluted at 1:200(room temperature, 45min).