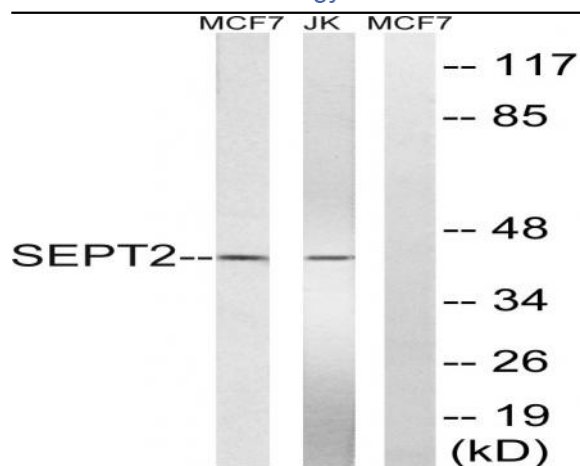


Septin 2 Polyclonal Antibody

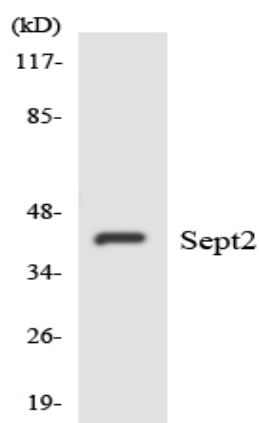
Catalog No :	YT4247
Reactivity :	Human;Mouse;Rat
Applications :	WB;IHC
Target :	Septin 2
Fields :	>>Bacterial invasion of epithelial cells;>>Shigellosis
Gene Name :	SEPT2
Protein Name :	Septin-2
Human Gene Id :	4735
Human Swiss Prot No :	Q15019
Mouse Gene Id :	18000
Mouse Swiss Prot No :	P42208
Rat Gene Id :	117515
Rat Swiss Prot No :	Q91Y81
Immunogen :	The antiserum was produced against synthesized peptide derived from human SEPT2. AA range:103-152
Specificity :	Septin 2 Polyclonal Antibody detects endogenous levels of Septin 2 protein.
Formulation :	Liquid in PBS containing 50% glycerol, 0.5% BSA and 0.02% sodium azide.
Source :	Polyclonal, Rabbit,IgG
Dilution :	WB 1:500-2000;IHC 1:50-300

Purification :	The antibody was affinity-purified from rabbit antiserum by affinity-chromatography using epitope-specific immunogen.
Concentration :	1 mg/ml
Storage Stability :	-15°C to -25°C/1 year(Do not lower than -25°C)
Observed Band :	41kD
Background :	<p>function:Required for normal progress through mitosis. Involved in cytokinesis.,similarity:Belongs to the septin family.,subcellular location:Accumulates near the contractile ring from anaphase through telophase, and finally condenses into the midbody. In interphase and postmitotic cells, localised to fibrous or granular structures, depending on the growth state of the cell.,subunit:Monomer, and homodimer. Nucleotide binding promotes dimerization. Heterohexamer composed of two heterotrimers containing one copy each of SEPT2, SEPT6 and SEPT7. The asymmetrical heterotrimers associate head-to-head to form a hexameric unit that assembles into filaments.,</p>
Function :	<p>function:Required for normal progress through mitosis. Involved in cytokinesis.,similarity:Belongs to the septin family.,subcellular location:Accumulates near the contractile ring from anaphase through telophase, and finally condenses into the midbody. In interphase and postmitotic cells, localised to fibrous or granular structures, depending on the growth state of the cell.,subunit:Monomer, and homodimer. Nucleotide binding promotes dimerization. Heterohexamer composed of two heterotrimers containing one copy each of SEPT2, SEPT6 and SEPT7. The asymmetrical heterotrimers associate head-to-head to form a hexameric unit that assembles into filaments.,</p>
Subcellular Location :	<p>Cytoplasm . Cytoplasm, cytoskeleton . Cytoplasm, cytoskeleton, spindle . Chromosome, centromere, kinetochore . Cleavage furrow . Midbody . Cytoplasm, cell cortex . Cell projection, cilium membrane . Cell projection, cilium, flagellum . In metaphase cells, localized within the microtubule spindle. At the metaphase plate, in close apposition to the kinetochores of the congressed chromosomes. In cells undergoing cytokinesis, localized to the midbody, the ingressing cleavage furrow, and the central spindle. During bacterial infection, displays a collar shape structure next to actin at the pole of invading bacteria. In epithelial cells, colocalizes with polyglutamylated tubulin around the trans-Golgi network, as well as juxtanuclear and proximal Golgi apparatus. Localizes at the base of the cil</p>
Expression :	Widely expressed. Up-regulated in liver cancer.

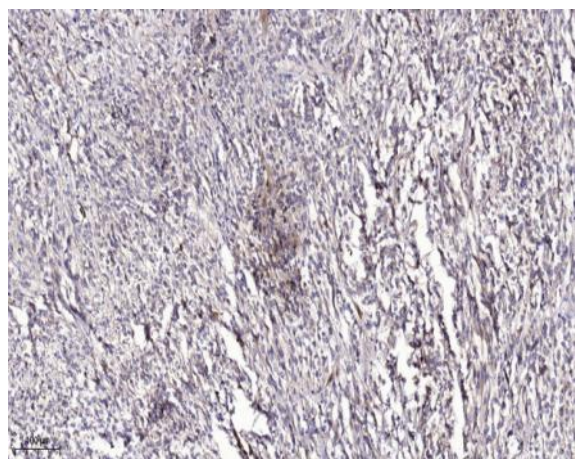
Products Images



Western blot analysis of lysates from Jurkat and MCF-7 cells, using SEPT2 Antibody. The lane on the right is blocked with the synthesized peptide.



Western blot analysis of the lysates from HepG2 cells using SEPT2 antibody.



Immunohistochemical analysis of paraffin-embedded human Colon cancer. 1, Antibody was diluted at 1:200(4° overnight). 2, Tris-EDTA,pH9.0 was used for antigen retrieval. 3,Secondary antibody was diluted at 1:200(room temperature, 45min).