

## POM121 Polyclonal Antibody

|                              |   |
|------------------------------|---|
| <b>Catalog No :</b>          | YT3819  |
| <b>Reactivity :</b>          | Human;Mouse;Rat   |
| <b>Applications :</b>        | WB;IHC;IF;ELISA   |
| <b>Target :</b>              | POM121  |
| <b>Fields :</b>              | >>Nucleocytoplasmic transport;>>Amyotrophic lateral sclerosis   |
| <b>Gene Name :</b>           | POM121  |
| <b>Protein Name :</b>        | Nuclear envelope pore membrane protein POM 121  |
| <b>Human Gene Id :</b>       | 9883  |
| <b>Human Swiss Prot No :</b> | Q96HA1/A6NF01/A8CG34  |
| <b>Mouse Gene Id :</b>       | 107939  |
| <b>Rat Gene Id :</b>         | 113975  |
| <b>Rat Swiss Prot No :</b>   | P52591  |
| <b>Immunogen :</b>           | The antiserum was produced against synthesized peptide derived from human POM121. AA range:1197-1246                  |
| <b>Specificity :</b>         | POM121 Polyclonal Antibody detects endogenous levels of POM121 protein.   |
| <b>Formulation :</b>         | Liquid in PBS containing 50% glycerol, 0.5% BSA and 0.02% sodium azide.   |
| <b>Source :</b>              | Polyclonal, Rabbit,IgG  |
| <b>Dilution :</b>            | WB 1:500 - 1:2000. IHC 1:100 - 1:300. ELISA: 1:40000.. IF 1:50-200  |
| <b>Purification :</b>        | The antibody was affinity-purified from rabbit antiserum by affinity-chromatography using epitope-specific immunogen. |

**Concentration :** 1 mg/ml

**Storage Stability :** -15°C to -25°C/1 year(Do not lower than -25°C)

**Observed Band :** 125kD

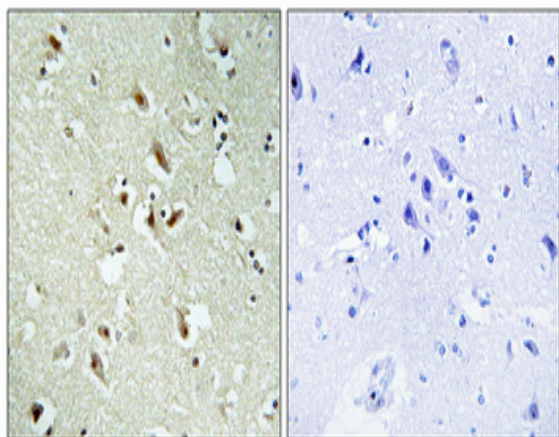
**Background :** This gene encodes a transmembrane protein that localizes to the inner nuclear membrane and forms a core component of the nuclear pore complex, which mediates transport to and from the nucleus. The encoded protein may anchor this complex to the nuclear envelope. There are multiple related genes and pseudogenes for this gene on chromosomes 5, 7, 15, and 22. Alternatively spliced transcript variants encoding different isoforms have been observed. [provided by RefSeq, Jul 2013],

**Function :** domain:Contains F-X-F-G repeats.,function:Essential component of the nuclear pore complex (NPC). The repeat-containing domain may be involved in anchoring components of the pore complex to the pore membrane. When overexpressed in cells induces the formation of cytoplasmic annulate lamellae (AL).,similarity:Belongs to the POM121 family.,subcellular location:Stably associated with the NPC throughout interphase and the endoplasmic reticulum during metaphase.,

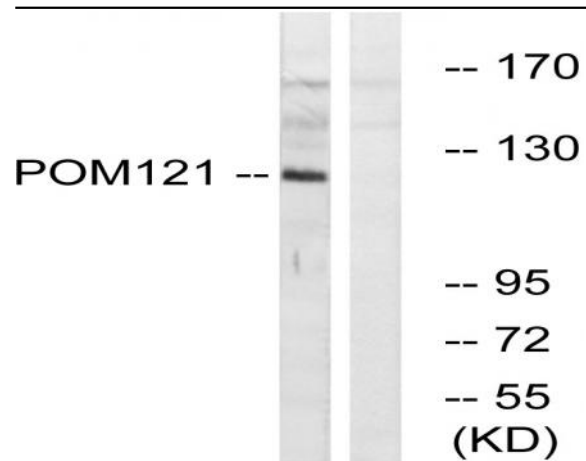
**Subcellular Location :** Nucleus, nuclear pore complex . Nucleus membrane ; Single-pass membrane protein . Endoplasmic reticulum membrane ; Single-pass membrane protein . Stably associated with the NPC throughout interphase and the endoplasmic reticulum during metaphase. .

**Expression :** Brain,Cervix,Lymph,Skin,Teratocarcinoma,Testis,Uterus,

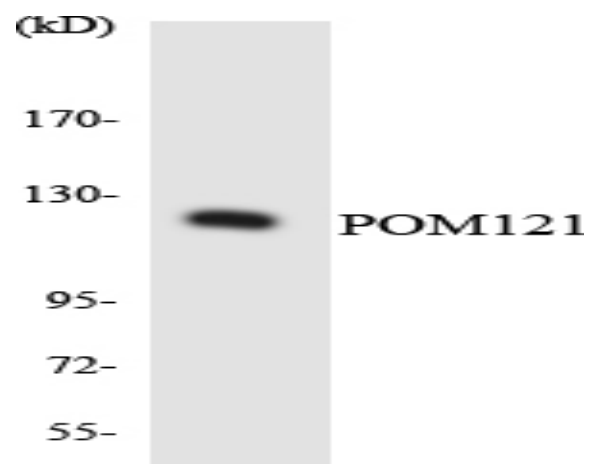
## Products Images



Immunohistochemical analysis of paraffin-embedded Human brain. Antibody was diluted at 1:100(4° overnight). High-pressure and temperature Tris-EDTA,pH8.0 was used for antigen retrieval. Negative contrl (right) obtained from antibody was pre-absorbed by immunogen peptide.



Western blot analysis of lysates from K562 cells, using POM121 Antibody. The lane on the right is blocked with the synthesized peptide.



Western blot analysis of the lysates from HUVEC cells using POM121 antibody.