

## RERG Polyclonal Antibody

<b>Catalog No :</b>	YT4055
<b>Reactivity :</b>	Human;Mouse
<b>Applications :</b>	IHC;IF;ELISA
<b>Target :</b>	RERG
<b>Gene Name :</b>	RERG
<b>Protein Name :</b>	Ras-related and estrogen-regulated growth inhibitor
<b>Human Gene Id :</b>	85004
<b>Human Swiss Prot No :</b>	Q96A58
<b>Mouse Gene Id :</b>	232441
<b>Mouse Swiss Prot No :</b>	Q8R367
<b>Immunogen :</b>	Synthesized peptide derived from RERG . at AA range: 70-150
<b>Specificity :</b>	RERG Polyclonal Antibody detects endogenous levels of RERG protein.
<b>Formulation :</b>	Liquid in PBS containing 50% glycerol, 0.5% BSA and 0.02% sodium azide.
<b>Source :</b>	Polyclonal, Rabbit,IgG
<b>Dilution :</b>	IHC 1:100 - 1:300. ELISA: 1:5000.. IF 1:50-200
<b>Purification :</b>	The antibody was affinity-purified from rabbit antiserum by affinity-chromatography using epitope-specific immunogen.
<b>Concentration :</b>	1 mg/ml
<b>Storage Stability :</b>	-15°C to -25°C/1 year(Do not lower than -25°C)

**Molecularweight :** 23kD

---

**Background :** RERG, a member of the RAS superfamily of GTPases, inhibits cell proliferation and tumor formation (Finlin et al., 2001 [PubMed 11533059]).[supplied by OMIM, Mar 2009],

---

**Function :** disease:Loss of RERG expression may contribute to tumorigenesis in breast. RERG expression is decreased or lost in a significant proportion of primary breast tumors with poor clinical prognosis. High expression of RERG correlates with long relapse-free survival times.,function:Binds GDP/GTP and possesses intrinsic GTPase activity. Has higher affinity for GDP than for GTP. In cell lines overexpression leads to a reduction in the rate of proliferation, colony formation and in tumorigenic potential.,induction:Up-regulated by estradiol. Down-regulated by tamoxifen.,similarity:Belongs to the small GTPase superfamily. Ras family.,tissue specificity:Detected in heart, brain, placenta, lung, liver, skin, kidney and pancreas. Detected in estrogen receptor-positive breast-derived cell lines, but not in estrogen receptor-negative cell lines.,

---

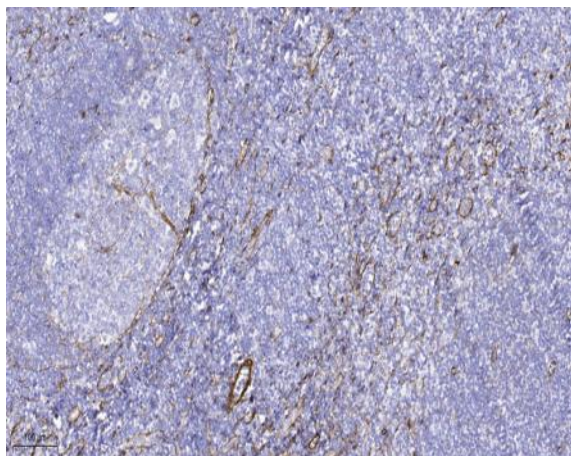
**Subcellular Location :** Cytoplasm .

---

**Expression :** Detected in heart, brain, placenta, lung, liver, skin, kidney and pancreas. Detected in estrogen receptor-positive breast-derived cell lines, but not in estrogen receptor-negative cell lines. Expression is decreased or lost in a significant proportion of primary breast tumors with poor clinical prognosis.

---

## Products Images



Immunohistochemical analysis of paraffin-embedded human tonsil. 1, Tris-EDTA,pH9.0 was used for antigen retrieval. 2 Antibody was diluted at 1:200(4° overnight.3,Secondary antibody was diluted at 1:200(room temperature, 45min).