

RBM26 Polyclonal Antibody

Catalog No :	YT4027
Reactivity :	Human;Mouse
Applications :	WB;IHC;IF;ELISA
Target :	RBM26
Gene Name :	RBM26
Protein Name :	RNA-binding protein 26
Human Gene Id :	64062
Human Swiss Prot No :	Q5T8P6
Mouse Gene Id :	74213
Mouse Swiss Prot No :	Q6NZN0
Immunogen :	The antiserum was produced against synthesized peptide derived from human RBM26. AA range:711-760
Specificity :	RBM26 Polyclonal Antibody detects endogenous levels of RBM26 protein.
Formulation :	Liquid in PBS containing 50% glycerol, 0.5% BSA and 0.02% sodium azide.
Source :	Polyclonal, Rabbit,IgG
Dilution :	WB 1:500 - 1:2000. ELISA: 1:10000.. IF 1:50-200
Purification :	The antibody was affinity-purified from rabbit antiserum by affinity-chromatography using epitope-specific immunogen.
Concentration :	1 mg/ml
Storage Stability :	-15°C to -25°C/1 year(Do not lower than -25°C)

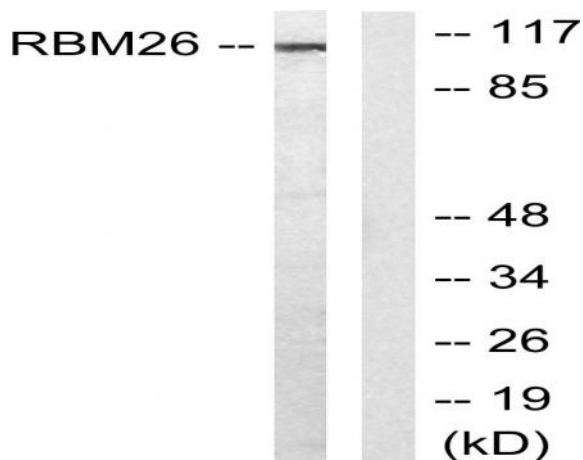
Observed Band : 113kD

Background : similarity:Contains 1 C3H1-type zinc finger.,similarity:Contains 2 RRM (RNA recognition motif) domains.,

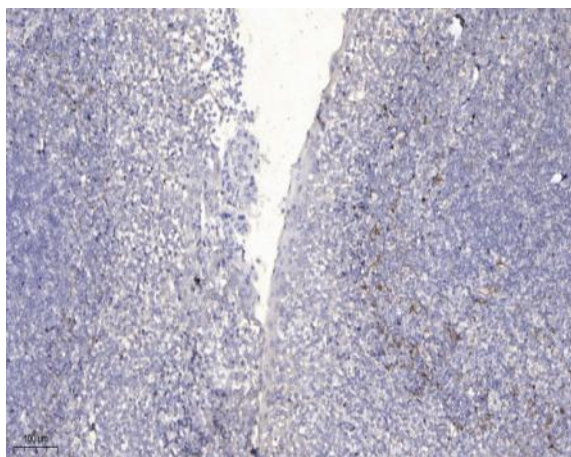
Function : similarity:Contains 1 C3H1-type zinc finger.,similarity:Contains 2 RRM (RNA recognition motif) domains.,

Expression : Adipose tissue,Amygdala,Embryo,Epithelium,Fetal liver,Lymph,Placenta,Terato

Products Images



Western blot analysis of lysates from Jurkat cells, using RBM26 Antibody. The lane on the right is blocked with the synthesized peptide.



Immunohistochemical analysis of paraffin-embedded human tonsil. 1, Antibody was diluted at 1:200(4° overnight). 2, Tris-EDTA,pH9.0 was used for antigen retrieval. 3,Secondary antibody was diluted at 1:200(room temperature, 30min).