

RPS6KL1 Polyclonal Antibody

Catalog No :	YT4174
Reactivity :	Human;Rat;Mouse;
Applications :	IHC;IF;ELISA
Target :	RPS6KL1
Gene Name :	RPS6KL1
Protein Name :	Ribosomal protein S6 kinase-like 1
Human Gene Id :	83694
Human Swiss Prot No :	Q9Y6S9
Mouse Swiss Prot No :	Q8R2S1
Immunogen :	The antiserum was produced against synthesized peptide derived from human RPS6KL1. AA range:254-303
Specificity :	RPS6KL1 Polyclonal Antibody detects endogenous levels of RPS6KL1 protein.
Formulation :	Liquid in PBS containing 50% glycerol, 0.5% BSA and 0.02% sodium azide.
Source :	Polyclonal, Rabbit,IgG
Dilution :	IHC 1:100 - 1:300. ELISA: 1:40000.. IF 1:50-200
Purification :	The antibody was affinity-purified from rabbit antiserum by affinity-chromatography using epitope-specific immunogen.
Concentration :	1 mg/ml
Storage Stability :	-15°C to -25°C/1 year(Do not lower than -25°C)
Molecularweight :	60kD

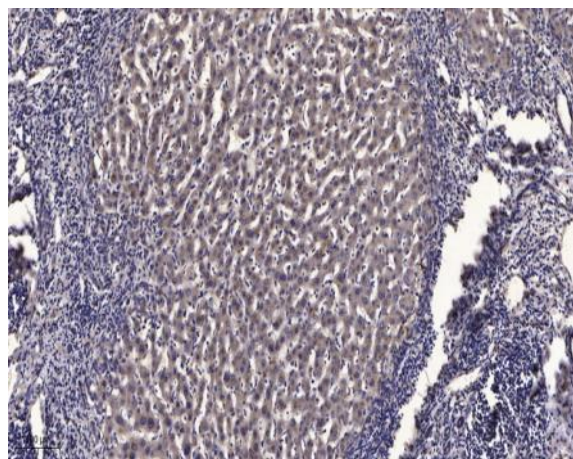
Background : catalytic activity:ATP + a protein = ADP + a phosphoprotein.,similarity:Belongs to the protein kinase superfamily. Ser/Thr protein kinase family. S6 kinase subfamily.,similarity:Contains 1 MIT domain.,similarity:Contains 1 protein kinase domain.,

Function : catalytic activity:ATP + a protein = ADP + a phosphoprotein.,similarity:Belongs to the protein kinase superfamily. Ser/Thr protein kinase family. S6 kinase subfamily.,similarity:Contains 1 MIT domain.,similarity:Contains 1 protein kinase domain.,

Subcellular Location : cytoplasm,ribosome,intracellular membrane-bounded organelle,

Expression : Cerebellum,Lung,Testis,

Products Images



Immunohistochemical analysis of paraffin-embedded human liver cancer. 1, Antibody was diluted at 1:200(4° overnight). 2, Tris-EDTA,pH9.0 was used for antigen retrieval. 3,Secondary antibody was diluted at 1:200(room temperature, 45min).