

## Rap 2C Polyclonal Antibody

<b>Catalog No :</b>	YT4004
<b>Reactivity :</b>	Human;Mouse
<b>Applications :</b>	WB;IHC
<b>Target :</b>	Rap 2C
<b>Fields :</b>	>>Tight junction
<b>Gene Name :</b>	RAP2C
<b>Protein Name :</b>	Ras-related protein Rap-2c
<b>Human Gene Id :</b>	57826
<b>Human Swiss Prot No :</b>	Q9Y3L5
<b>Mouse Gene Id :</b>	72065
<b>Mouse Swiss Prot No :</b>	Q8BU31
<b>Immunogen :</b>	The antiserum was produced against synthesized peptide derived from human RAP2C. AA range:97-146
<b>Specificity :</b>	Rap 2C Polyclonal Antibody detects endogenous levels of Rap 2C protein.
<b>Formulation :</b>	Liquid in PBS containing 50% glycerol, 0.5% BSA and 0.02% sodium azide.
<b>Source :</b>	Polyclonal, Rabbit,IgG
<b>Dilution :</b>	WB 1:500-2000;IHC 1:50-300
<b>Purification :</b>	The antibody was affinity-purified from rabbit antiserum by affinity-chromatography using epitope-specific immunogen.
<b>Concentration :</b>	1 mg/ml

**Storage Stability :** -15°C to -25°C/1 year(Do not lower than -25°C)

**Observed Band :** 26kD

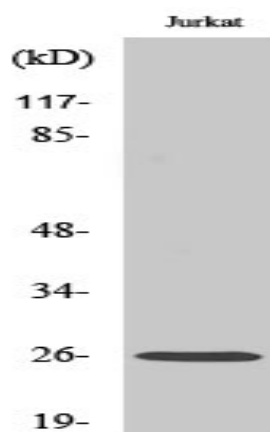
**Background :** The protein encoded by this gene is a member of the Ras-related protein subfamily of the Ras GTPase superfamily. Members of this family are small GTPases that act as molecular switches to regulate cellular proliferation, differentiation, and apoptosis. This protein has been reported to activate in vitro transcriptional activity of the serum response element. Alternative splicing results in multiple transcript variants. [provided by RefSeq, Sep 2012],

**Function :** similarity:Belongs to the small GTPase superfamily. Ras family.,tissue specificity:Expressed in mononuclear leukocytes and megakaryocytes. Not detected in platelets.,

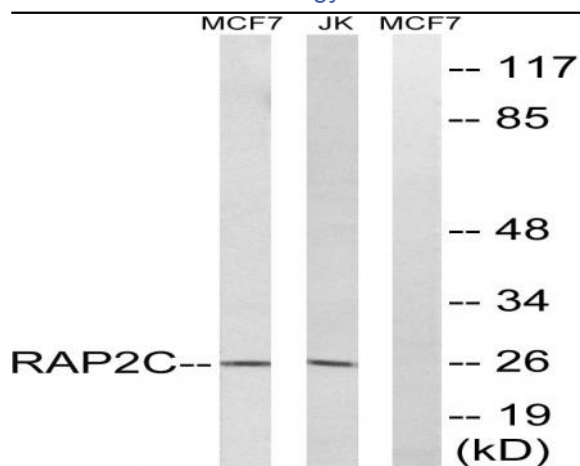
**Subcellular Location :** Cytoplasm . Recycling endosome membrane ; Lipid-anchor ; Cytoplasmic side .

**Expression :** Expressed in liver, skeletal muscle, prostate, uterus, rectum, stomach, and bladder and to a lower extent in brain, kidney, pancreas, and bone marrow. Expressed in mononuclear leukocytes and megakaryocytes.

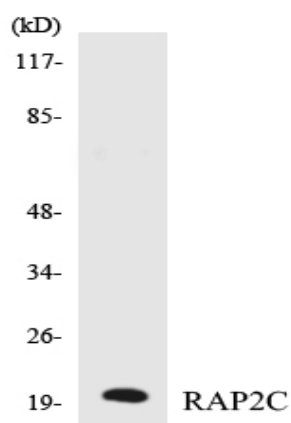
## Products Images



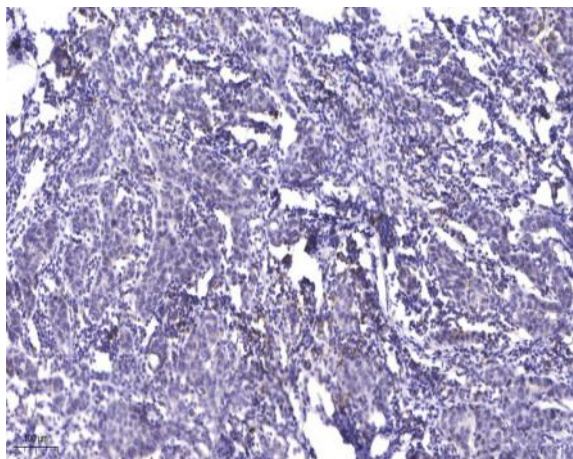
Western Blot analysis of various cells using Rap 2C Polyclonal Antibody diluted at 1:500



Western blot analysis of lysates from Jurkat and MCF-7 cells, using RAP2C Antibody. The lane on the right is blocked with the synthesized peptide.



Western blot analysis of the lysates from K562 cells using RAP2C antibody.



Immunohistochemical analysis of paraffin-embedded human Breast cancer. 1, Antibody was diluted at 1:200(4° overnight). 2, Tris-EDTA,pH9.0 was used for antigen retrieval. 3,Secondary antibody was diluted at 1:200(room temperature, 45min).