

Photomedin-2 Polyclonal Antibody

Catalog No :	YT3706
Reactivity :	Human;Mouse
Applications :	WB;IHC;IF;ELISA
Target :	Photomedin-2
Gene Name :	OLFML2B
Protein Name :	Olfactomedin-like protein 2B
Human Gene Id :	25903
Human Swiss Prot No :	Q68BL8
Mouse Gene Id :	320078
Mouse Swiss Prot No :	Q3V1G4
Immunogen :	The antiserum was produced against synthesized peptide derived from human OLFML2B. AA range:171-220
Specificity :	Photomedin-2 Polyclonal Antibody detects endogenous levels of Photomedin-2 protein.
Formulation :	Liquid in PBS containing 50% glycerol, 0.5% BSA and 0.02% sodium azide.
Source :	Polyclonal, Rabbit,IgG
Dilution :	WB 1:500 - 1:2000. IHC 1:100 - 1:300. IF 1:200 - 1:1000. ELISA: 1:10000. Not yet tested in other applications.
Purification :	The antibody was affinity-purified from rabbit antiserum by affinity-chromatography using epitope-specific immunogen.
Concentration :	1 mg/ml

Storage Stability : -15°C to -25°C/1 year(Do not lower than -25°C)

Observed Band : 84kD

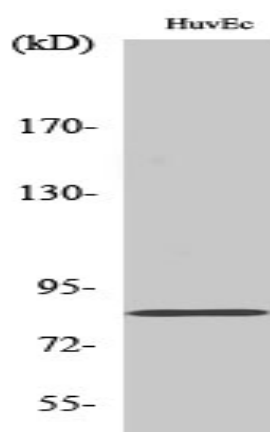
Background : PTM:O-glycosylated and N-glycosylated.,similarity:Contains 1 olfactomedin-like domain.,subunit:Homodimer. Binds to heparin and chondroitin sulfate E.,

Function : PTM:O-glycosylated and N-glycosylated.,similarity:Contains 1 olfactomedin-like domain.,subunit:Homodimer. Binds to heparin and chondroitin sulfate E.,

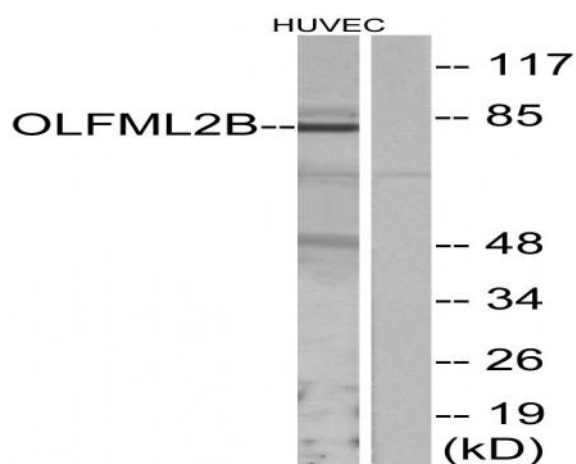
Subcellular Location : Secreted .

Expression : Endometrium,PNS,Retina,Testis,Uterus,

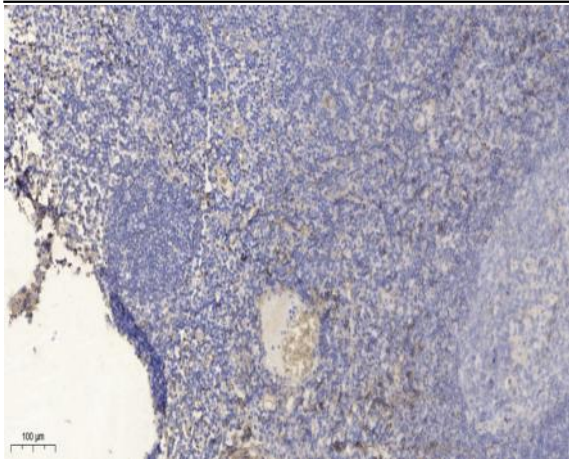
Products Images



Western Blot analysis of various cells using Photomedin-2 Polyclonal Antibody



Western blot analysis of lysates from HUVEC cells, using OLFML2B Antibody. The lane on the right is blocked with the synthesized peptide.



Immunohistochemical analysis of paraffin-embedded human tonsil. 1, Antibody was diluted at 1:200(4 ° overnight). 2, Tris-EDTA,pH9.0 was used for antigen retrieval. 3,Secondary antibody was diluted at 1:200(room temperature, 30min).