

**Photomedin-1 Polyclonal Antibody**

<b>Catalog No :</b>	YT3705
<b>Reactivity :</b>	Human;Mouse
<b>Applications :</b>	WB;IHC
<b>Target :</b>	Photomedin-1
<b>Gene Name :</b>	OLFML2A
<b>Protein Name :</b>	Olfactomedin-like protein 2A
<b>Human Gene Id :</b>	169611
<b>Human Swiss Prot No :</b>	Q68BL7
<b>Mouse Swiss Prot No :</b>	Q8BHP7
<b>Immunogen :</b>	The antiserum was produced against synthesized peptide derived from human OLFML2A. AA range:311-360
<b>Specificity :</b>	Photomedin-1 Polyclonal Antibody detects endogenous levels of Photomedin-1 protein.
<b>Formulation :</b>	Liquid in PBS containing 50% glycerol, 0.5% BSA and 0.02% sodium azide.
<b>Source :</b>	Polyclonal, Rabbit,IgG
<b>Dilution :</b>	WB 1:500-2000;IHC 1:50-300
<b>Purification :</b>	The antibody was affinity-purified from rabbit antiserum by affinity-chromatography using epitope-specific immunogen.
<b>Concentration :</b>	1 mg/ml
<b>Storage Stability :</b>	-15°C to -25°C/1 year(Do not lower than -25°C)
<b>Observed Band :</b>	73kD

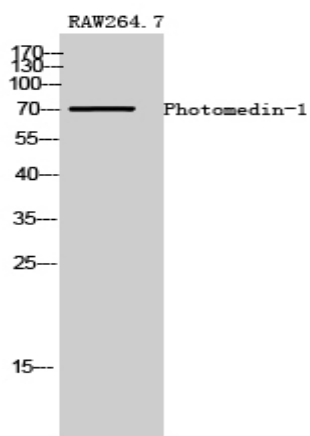
**Background :** PTM:May be cleaved at Lys-295 after secretion.,PTM:O-glycosylated but not N-glycosylated.,similarity:Contains 1 olfactomedin-like domain.,subunit:Homodimer. Binds to heparin and chondroitin sulfate E.,

**Function :** PTM:May be cleaved at Lys-295 after secretion.,PTM:O-glycosylated but not N-glycosylated.,similarity:Contains 1 olfactomedin-like domain.,subunit:Homodimer. Binds to heparin and chondroitin sulfate E.,

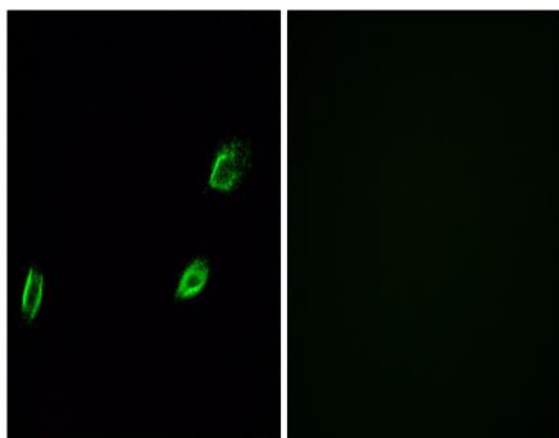
**Subcellular Location :** Secreted . Localizes to the podocyte major processes. Colocalized with the major process protein VIM throughout podocyte development. .

**Expression :** In the kidney expressed only by podocytes, wherein they localize to major processes.

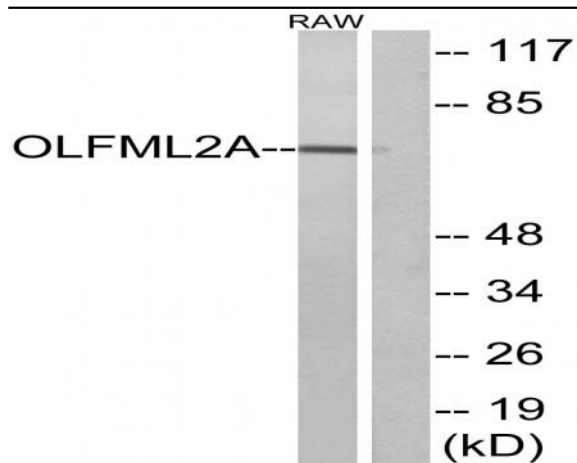
## Products Images



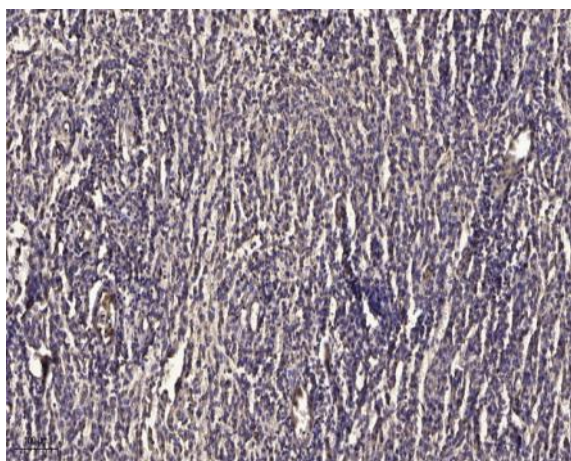
Western Blot analysis of RAW264.7 cells using Photomedin-1 Polyclonal Antibody



Immunofluorescence analysis of A549 cells, using OLFML2A Antibody. The picture on the right is blocked with the synthesized peptide.



Western blot analysis of lysates from RAW264.7 cells, using OLFML2A Antibody. The lane on the right is blocked with the synthesized peptide.



Immunohistochemical analysis of paraffin-embedded human meningioma. 1, Antibody was diluted at 1:200(4° overnight). 2, Tris-EDTA,pH9.0 was used for antigen retrieval. 3,Secondary antibody was diluted at 1:200(room temperature, 45min).