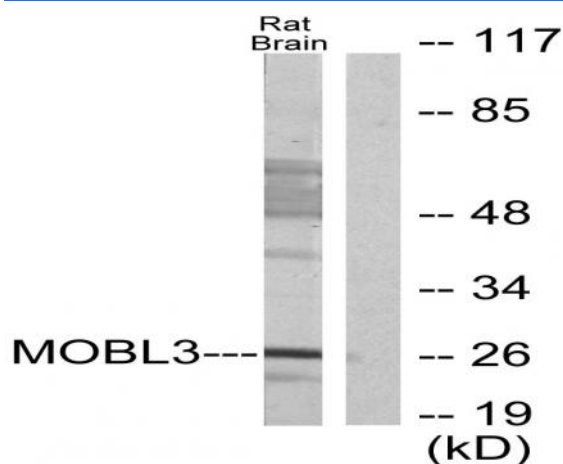


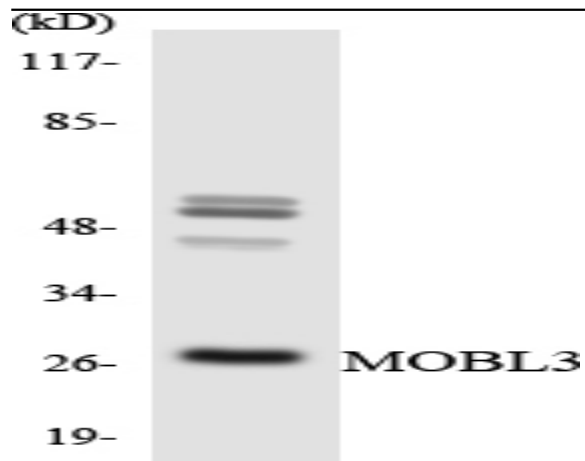
Phocein Polyclonal Antibody

Catalog No :	YT3704
Reactivity :	Human;Mouse;Rat
Applications :	WB;IHC;IF;ELISA
Target :	Phocein
Gene Name :	MOB4
Protein Name :	MOB-like protein phocein
Human Gene Id :	25843
Human Swiss Prot No :	Q9Y3A3
Mouse Gene Id :	19070
Mouse Swiss Prot No :	Q6PEB6
Rat Gene Id :	171050
Rat Swiss Prot No :	Q9QYW3
Immunogen :	The antiserum was produced against synthesized peptide derived from human MOBL3. AA range:1-50
Specificity :	Phocein Polyclonal Antibody detects endogenous levels of Phocein protein.
Formulation :	Liquid in PBS containing 50% glycerol, 0.5% BSA and 0.02% sodium azide.
Source :	Polyclonal, Rabbit,IgG
Dilution :	WB 1:500 - 1:2000. IHC 1:100 - 1:300. IF 1:200 - 1:1000. ELISA: 1:20000. Not yet tested in other applications.
Purification :	The antibody was affinity-purified from rabbit antiserum by affinity-chromatography using epitope-specific immunogen.

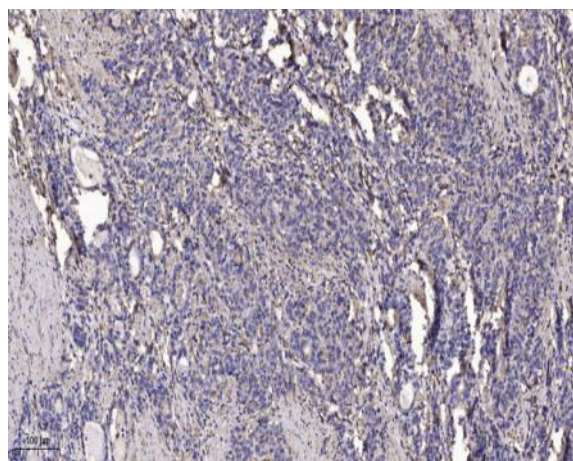
Concentration :	1 mg/ml
Storage Stability :	-15°C to -25°C/1 year(Do not lower than -25°C)
Observed Band :	26kD
Background :	This gene was identified based on its similarity with the mouse counterpart. Studies of the mouse counterpart suggest that the expression of this gene may be regulated during oocyte maturation and preimplantation following zygotic gene activation. Alternatively spliced transcript variants encoding distinct isoforms have been observed. Naturally occurring read-through transcription occurs between this locus and the neighboring locus HSPE1.[provided by RefSeq, Feb 2011],
Function :	PTM:Phosphorylated on serine residues.,similarity:Belongs to the MOB1/phocein family.,subcellular location:In a perinuclear punctate pattern. Associated with membranes and the Golgi stacks.,subunit:Binds STRN4 (By similarity). Binds STRN and STRN3. Part of a ternary complex containing MOBKL3, STRN and/or STRN3 and PPA2.,
Subcellular Location :	Cytoplasm, perinuclear region . Membrane ; Peripheral membrane protein . Golgi apparatus, Golgi stack membrane ; Peripheral membrane protein . In a perinuclear punctate pattern. Associated with membranes and the Golgi stacks.
Expression :	Adrenal gland,Brain,Trachea,Urinary bladder,

Products Images





Western blot analysis of the lysates from HT-29 cells using MOBL3 antibody.



Immunohistochemical analysis of paraffin-embedded human Gastric adenocarcinoma. 1, Antibody was diluted at 1:200(4° overnight). 2, Tris-EDTA,pH9.0 was used for antigen retrieval. 3,Secondary antibody was diluted at 1:200(room temperature, 45min).