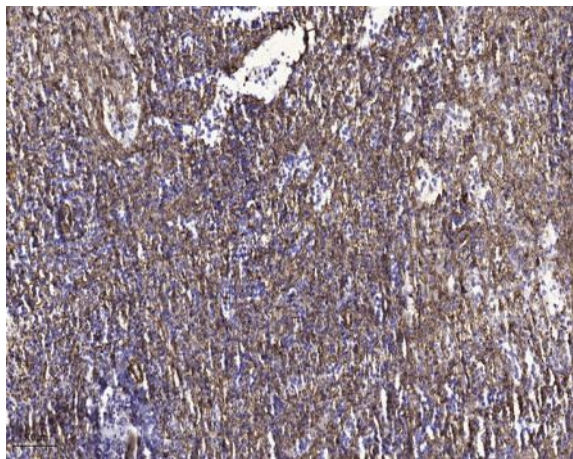


## Rab L5 Polyclonal Antibody

<b>Catalog No :</b>	YT3941
<b>Reactivity :</b>	Human;Rat;Mouse;
<b>Applications :</b>	IHC;IF;ELISA
<b>Target :</b>	Rab L5
<b>Gene Name :</b>	RABL5
<b>Protein Name :</b>	Rab-like protein 5
<b>Human Gene Id :</b>	64792
<b>Human Swiss Prot No :</b>	Q9H7X7
<b>Mouse Swiss Prot No :</b>	Q9DAI2
<b>Immunogen :</b>	The antiserum was produced against synthesized peptide derived from human RABL5. AA range:128-177
<b>Specificity :</b>	Rab L5 Polyclonal Antibody detects endogenous levels of Rab L5 protein.
<b>Formulation :</b>	Liquid in PBS containing 50% glycerol, 0.5% BSA and 0.02% sodium azide.
<b>Source :</b>	Polyclonal, Rabbit,IgG
<b>Dilution :</b>	IHC 1:100 - 1:300. ELISA: 1:5000.. IF 1:50-200
<b>Purification :</b>	The antibody was affinity-purified from rabbit antiserum by affinity-chromatography using epitope-specific immunogen.
<b>Concentration :</b>	1 mg/ml
<b>Storage Stability :</b>	-15°C to -25°C/1 year(Do not lower than -25°C)
<b>Molecularweight :</b>	21kD

<b>Background :</b>	<u>similarity:Belongs to the small GTPase superfamily. Rab family.,</u>
<b>Function :</b>	<u>similarity:Belongs to the small GTPase superfamily. Rab family.,</u>
<b>Subcellular Location :</b>	<u>Cell projection, cilium .</u>
<b>Expression :</b>	<u>Amygdala,Brain,Lung,Mammary gland,Ovary,</u>

## Products Images



Immunohistochemical analysis of paraffin-embedded human spleen tissue. 1,primary Antibody was diluted at 1:200(4° overnight). 2, Sodium citrate pH 6.0 was used for antigen retrieval(>98 °C,20min). 3,Secondary antibody was diluted at 1:200