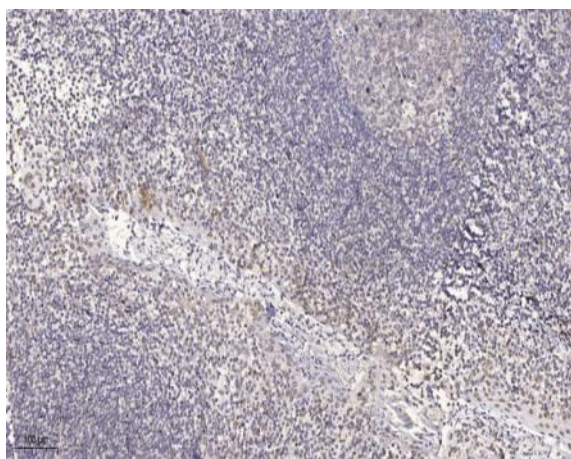


PHI-1 Polyclonal Antibody

Catalog No :	YT3699
Reactivity :	Human;Mouse;Rat
Applications :	IHC;IF;ELISA
Target :	PHI-1
Gene Name :	PPP1R14B
Protein Name :	Protein phosphatase 1 regulatory subunit 14B
Human Gene Id :	26472
Human Swiss Prot No :	Q96C90
Mouse Gene Id :	18938
Mouse Swiss Prot No :	Q62084
Rat Gene Id :	259225
Rat Swiss Prot No :	Q8K3F3
Immunogen :	Synthesized peptide derived from PHI-1 . at AA range: 50-130
Specificity :	PHI-1 Polyclonal Antibody detects endogenous levels of PHI-1 protein.
Formulation :	Liquid in PBS containing 50% glycerol, 0.5% BSA and 0.02% sodium azide.
Source :	Polyclonal, Rabbit,IgG
Dilution :	IHC 1:100 - 1:300. ELISA: 1:20000.. IF 1:50-200
Purification :	The antibody was affinity-purified from rabbit antiserum by affinity-chromatography using epitope-specific immunogen.

Concentration :	1 mg/ml
Storage Stability :	-15°C to -25°C/1 year(Do not lower than -25°C)
Molecularweight :	16kD
Background :	function:Inhibitor of PPP1CA. Has over 50-fold higher inhibitory activity when phosphorylated.,PTM:Phosphorylated primarily on Thr-57 by PKC (in vitro). An unknown Ser is also phosphorylated by PKC (in vitro).,similarity:Belongs to the PP1 inhibitor family.,tissue specificity:Ubiquitous. Expressed at low levels.,
Function :	function:Inhibitor of PPP1CA. Has over 50-fold higher inhibitory activity when phosphorylated.,PTM:Phosphorylated primarily on Thr-57 by PKC (in vitro). An unknown Ser is also phosphorylated by PKC (in vitro).,similarity:Belongs to the PP1 inhibitor family.,tissue specificity:Ubiquitous. Expressed at low levels.,
Subcellular Location :	Cytoplasm .
Expression :	Ubiquitous. Expressed at low levels.

Products Images



Immunohistochemical analysis of paraffin-embedded human tonsil. 1, Antibody was diluted at 1:200(4° overnight). 2, Tris-EDTA,pH9.0 was used for antigen retrieval. 3,Secondary antibody was diluted at 1:200(room temperature, 30min).