

Rab 38 Polyclonal Antibody

Catalog No :	YT3933
Reactivity :	Human;Mouse;Rat
Applications :	WB;IHC
Target :	Rab 38
Gene Name :	RAB38
Protein Name :	Ras-related protein Rab-38
Human Gene Id :	23682
Human Swiss Prot No :	P57729
Mouse Gene Id :	72433
Mouse Swiss Prot No :	Q8QZZ8
Immunogen :	The antiserum was produced against synthesized peptide derived from human RAB38. AA range:80-129
Specificity :	Rab 38 Polyclonal Antibody detects endogenous levels of Rab 38 protein.
Formulation :	Liquid in PBS containing 50% glycerol, 0.5% BSA and 0.02% sodium azide.
Source :	Polyclonal, Rabbit,IgG
Dilution :	WB 1:500-2000;IHC 1:50-300
Purification :	The antibody was affinity-purified from rabbit antiserum by affinity-chromatography using epitope-specific immunogen.
Concentration :	1 mg/ml
Storage Stability :	-15°C to -25°C/1 year(Do not lower than -25°C)

Observed Band : 26kD

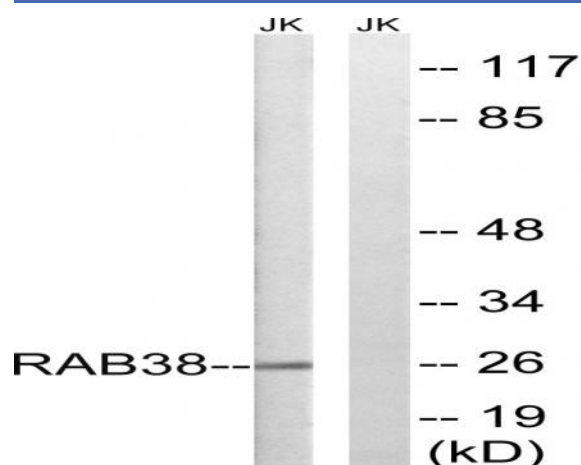
Background : function:May be involved in melanosomal transport and docking. Involved in the proper sorting of TYRP1.,PTM:Although at least one in vitro system can process and methylate the prenylated C-terminal, in an in vitro system that normally express Rab-38 and in vivo the prenylated C-terminal is not proteolytically processed and not methylated.,similarity:Belongs to the small GTPase superfamily. Rab family.,tissue specificity:Expressed in melanocytes.,

Function : function:May be involved in melanosomal transport and docking. Involved in the proper sorting of TYRP1.,PTM:Although at least one in vitro system can process and methylate the prenylated C-terminal, in an in vitro system that normally express Rab-38 and in vivo the prenylated C-terminal is not proteolytically processed and not methylated.,similarity:Belongs to the small GTPase superfamily. Rab family.,tissue specificity:Expressed in melanocytes.,

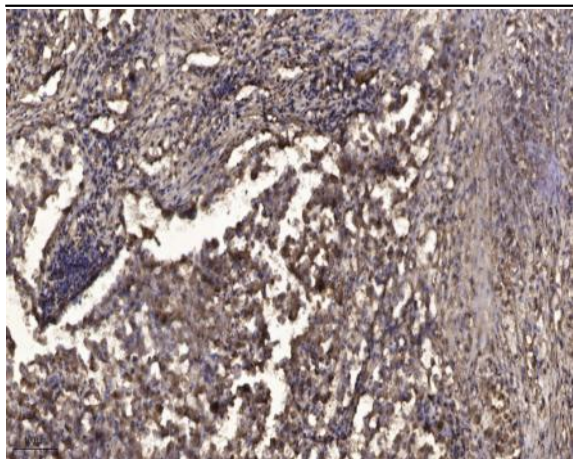
Subcellular Location : Cell membrane ; Lipid-anchor ; Cytoplasmic side . Melanosome . Cytoplasmic vesicle, phagosome . Cytoplasmic vesicle, phagosome membrane ; Lipid-anchor ; Cytoplasmic side . Melanosome membrane . Recruited to phagosomes containing S.aureus or M.tuberculosis (PubMed:21255211). The BLOC-3 complex, a heterodimer of HPS1 and HPS4 promotes its membrane localization (PubMed:23084991). .

Expression : Expressed in melanocytes.

Products Images



Western blot analysis of lysates from Jurkat cells, using RAB38 Antibody. The lane on the right is blocked with the synthesized peptide.



Immunohistochemical analysis of paraffin-embedded human Squamous cell carcinoma of lung. 1, Antibody was diluted at 1:200(4° overnight). 2, Tris-EDTA,pH9.0 was used for antigen retrieval. 3,Secondary antibody was diluted at 1:200(room temperature, 45min).