

## Pepsin A Polyclonal Antibody

<b>Catalog No :</b>	YT3660
<b>Reactivity :</b>	Human
<b>Applications :</b>	WB;IHC;IF;ELISA
<b>Target :</b>	Pepsin A
<b>Gene Name :</b>	PGA3/PGA4/PGA5
<b>Protein Name :</b>	Pepsin A
<b>Human Gene Id :</b>	5222/643847
<b>Human Swiss Prot No :</b>	P0DJD8/P0DJD7/P0DJD9
<b>Immunogen :</b>	The antiserum was produced against synthesized peptide derived from human Pepsin A. AA range:258-307
<b>Specificity :</b>	Pepsin A Polyclonal Antibody detects endogenous levels of Pepsin A protein.
<b>Formulation :</b>	Liquid in PBS containing 50% glycerol, 0.5% BSA and 0.02% sodium azide.
<b>Source :</b>	Polyclonal, Rabbit,IgG
<b>Dilution :</b>	WB 1:500 - 1:2000. IHC 1:100 - 1:300. ELISA: 1:10000.. IF 1:50-200
<b>Purification :</b>	The antibody was affinity-purified from rabbit antiserum by affinity-chromatography using epitope-specific immunogen.
<b>Concentration :</b>	1 mg/ml
<b>Storage Stability :</b>	-15°C to -25°C/1 year(Do not lower than -25°C)
<b>Observed Band :</b>	42kD
<b>Background :</b>	This gene encodes a protein precursor of the digestive enzyme pepsin, a member of the peptidase A1 family of endopeptidases. The encoded precursor is

secreted by gastric chief cells and undergoes autocatalytic cleavage in acidic conditions to form the active enzyme, which functions in the digestion of dietary proteins. This gene is found in a cluster of related genes on chromosome 11, each of which encodes one of multiple pepsinogens. Pepsinogen levels in serum may serve as a biomarker for atrophic gastritis and gastric cancer. [provided by RefSeq, Jul 2015],

**Function :**

catalytic activity: Preferential cleavage: hydrophobic, preferably aromatic, residues in P1 and P1' positions. Cleaves 1-Phe-|-Val-2, 4-Gln-|-His-5, 13-Glu-|-Ala-14, 14-Ala-|-Leu-15, 15-Leu-|-Tyr-16, 16-Tyr-|-Leu-17, 23-Gly-|-Phe-24, 24-Phe-|-Phe-25 and 25-Phe-|-Tyr-26 bonds in the B chain of insulin., function: Shows particularly broad specificity; although bonds involving phenylalanine and leucine are preferred, many others are also cleaved to some extent., similarity: Belongs to the peptidase A1 family.,

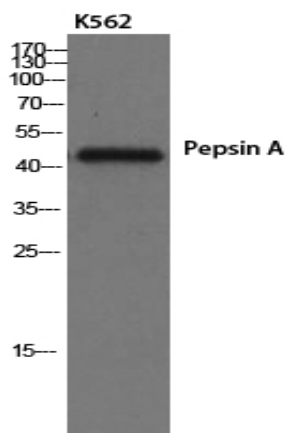
**Subcellular Location :**

extracellular exosome, multivesicular body lumen,

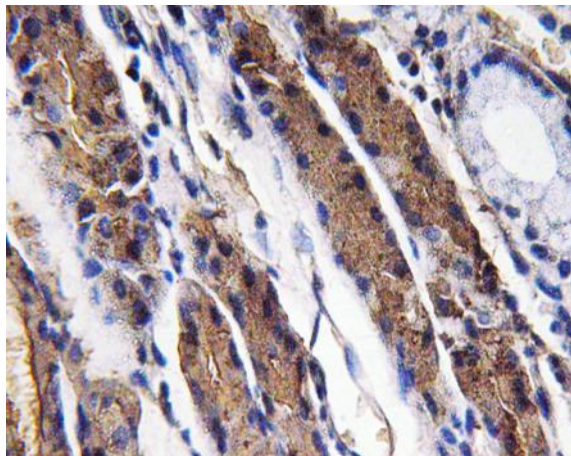
**Expression :**

Brain, Colon, Kidney, Placenta, Skeletal muscle,

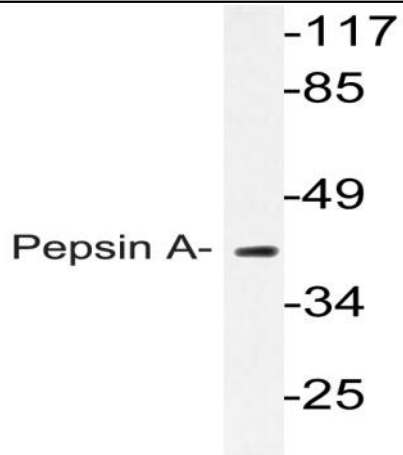
## Products Images



Western Blot analysis of K562 cells using Pepsin A Polyclonal Antibody



Immunohistochemistry analysis of Pepsin A antibody in paraffin-embedded human lung carcinoma tissue.



Western blot analysis of lysate from K562 cells, using Pepsin A antibody.