

PEA3 Polyclonal Antibody

Catalog No :	YT3656
Reactivity :	Human;Mouse
Applications :	IHC;IF;ELISA
Target :	PEA3
Fields :	>>Transcriptional misregulation in cancer
Gene Name :	ETV4
Protein Name :	ETS translocation variant 4
Human Gene Id :	2118
Human Swiss Prot No :	P43268
Mouse Swiss Prot No :	P28322
Immunogen :	The antiserum was produced against synthesized peptide derived from human ETV4. AA range:281-330
Specificity :	PEA3 Polyclonal Antibody detects endogenous levels of PEA3 protein.
Formulation :	Liquid in PBS containing 50% glycerol, 0.5% BSA and 0.02% sodium azide.
Source :	Polyclonal, Rabbit,IgG
Dilution :	IHC 1:100 - 1:300. ELISA: 1:20000.. IF 1:50-200
Purification :	The antibody was affinity-purified from rabbit antiserum by affinity-chromatography using epitope-specific immunogen.
Concentration :	1 mg/ml
Storage Stability :	-15°C to -25°C/1 year(Do not lower than -25°C)

Molecularweight : 54kD

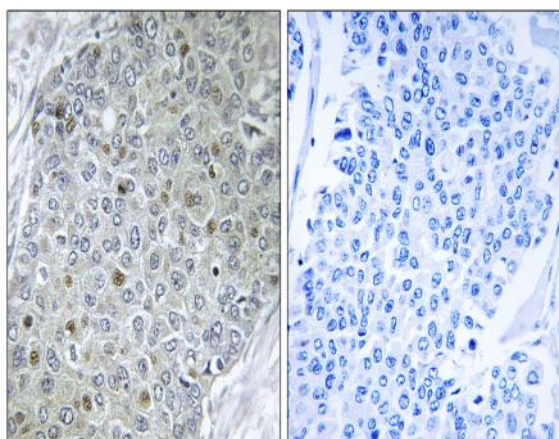
Background : function:Transcriptional activator that binds to the enhancer of the adenovirus E1A gene; the core-binding sequence is 5'[AC]GGA[AT]GT-3'.,similarity:Belongs to the ETS family.,similarity:Contains 1 ETS DNA-binding domain.,

Function : function:Transcriptional activator that binds to the enhancer of the adenovirus E1A gene; the core-binding sequence is 5'[AC]GGA[AT]GT-3'.,similarity:Belongs to the ETS family.,similarity:Contains 1 ETS DNA-binding domain.,

Subcellular Location : Nucleus .

Expression : Expressed in keratinocytes.

Products Images



Immunohistochemistry analysis of paraffin-embedded human breast carcinoma tissue, using ETV4 Antibody. The picture on the right is blocked with the synthesized peptide.