

PDZK3 Polyclonal Antibody

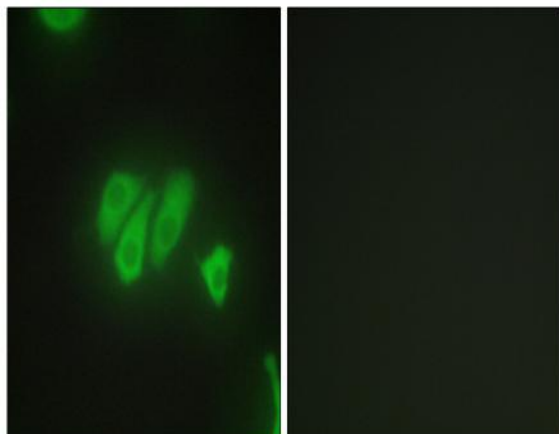
Catalog No :	YT3651
Reactivity :	Human;Mouse;Rat
Applications :	IHC;IF;ELISA
Target :	PDZK3
Gene Name :	PDZD2
Protein Name :	PDZ domain-containing protein 2
Human Gene Id :	23037
Human Swiss Prot No :	O15018
Rat Gene Id :	65034
Rat Swiss Prot No :	Q9QZR8
Immunogen :	The antiserum was produced against synthesized peptide derived from human PDZD2. AA range:51-100
Specificity :	PDZK3 Polyclonal Antibody detects endogenous levels of PDZK3 protein.
Formulation :	Liquid in PBS containing 50% glycerol, 0.5% BSA and 0.02% sodium azide.
Source :	Polyclonal, Rabbit,IgG
Dilution :	IHC 1:100 - 1:300. IF 1:200 - 1:1000. ELISA: 1:10000. Not yet tested in other applications.
Purification :	The antibody was affinity-purified from rabbit antiserum by affinity-chromatography using epitope-specific immunogen.
Concentration :	1 mg/ml
Storage Stability :	-15°C to -25°C/1 year(Do not lower than -25°C)

Molecularweight : 302kD**Background :** The protein encoded by this gene contains six PDZ domains and shares sequence similarity with pro-interleukin-16 (pro-IL-16). Like pro-IL-16, the encoded protein localizes to the endoplasmic reticulum and is thought to be cleaved by a caspase to produce a secreted peptide containing two PDZ domains. In addition, this gene is upregulated in primary prostate tumors and may be involved in the early stages of prostate tumorigenesis. [provided by RefSeq, Dec 2015],

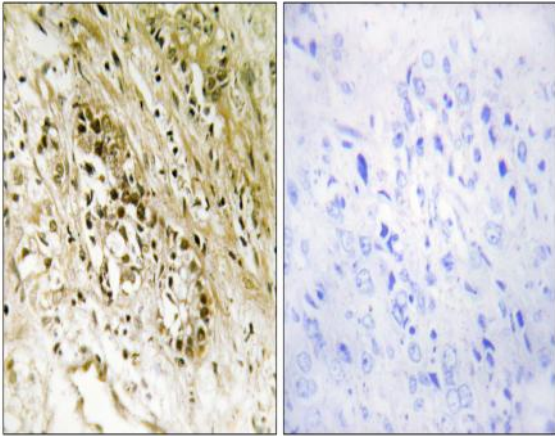
Function : disease:May be associated with the early promotion of prostate tumoregenesis.,PTM:A secreted form is produced by caspase-mediated proteolytic cleavage.,similarity:Contains 1 PDZ (DHR) domain.,similarity:Contains 6 PDZ (DHR) domains.,subcellular location:At cell-cell contacts in lung epithelial cells.,subunit:Interacts with SCN10A, CTNND2 and PKP4.,tissue specificity:Expressed (at protein level) in prostate and many prostate tumors.,

Subcellular Location : Nucleus . Cytoplasm . Endoplasmic reticulum . At cell-cell contacts in lung epithelial cells. . ; [Processed PDZ domain-containing protein 2]: Secreted .**Expression :** Isoform 2 is expressed (at protein level) in prostate and many prostate tumors.

Products Images



Immunofluorescence analysis of HepG2 cells, using PDZD2 Antibody. The picture on the right is blocked with the synthesized peptide.



Immunohistochemistry analysis of paraffin-embedded human heart tissue, using PDZD2 Antibody. The picture on the right is blocked with the synthesized peptide.