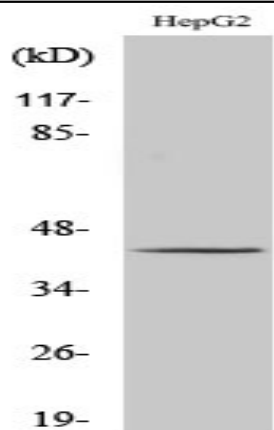


PSMC6 Polyclonal Antibody

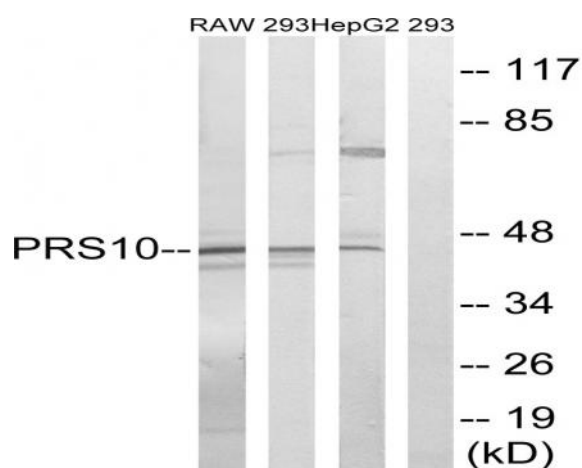
Catalog No :	YT3885
Reactivity :	Human;Mouse
Applications :	WB;IHC
Target :	PSMC6
Fields :	>>Proteasome;>>Alzheimer disease;>>Parkinson disease;>>Amyotrophic lateral sclerosis;>>Huntington disease;>>Spinocerebellar ataxia;>>Prion disease;>>Pathways of neurodegeneration - multiple diseases;>>Epstein-Barr virus infection
Gene Name :	PSMC6
Protein Name :	26S protease regulatory subunit 10B
Human Gene Id :	5706
Human Swiss Prot No :	P62333
Mouse Gene Id :	67089
Mouse Swiss Prot No :	P62334
Immunogen :	The antiserum was produced against synthesized peptide derived from human PSMC6. AA range:61-110
Specificity :	PSMC6 Polyclonal Antibody detects endogenous levels of PSMC6 protein.
Formulation :	Liquid in PBS containing 50% glycerol, 0.5% BSA and 0.02% sodium azide.
Source :	Polyclonal, Rabbit,IgG
Dilution :	WB 1:500-2000;IHC 1:50-300
Purification :	The antibody was affinity-purified from rabbit antiserum by affinity-chromatography using epitope-specific immunogen.

Concentration :	1 mg/ml
Storage Stability :	-15°C to -25°C/1 year(Do not lower than -25°C)
Observed Band :	44kD
Cell Pathway :	Proteasome;
Background :	<p>proteasome 26S subunit, ATPase 6(PSMC6) Homo sapiens The 26S proteasome is a multicatalytic proteinase complex with a highly ordered structure composed of 2 complexes, a 20S core and a 19S regulator. The 20S core is composed of 4 rings of 28 non-identical subunits; 2 rings are composed of 7 alpha subunits and 2 rings are composed of 7 beta subunits. The 19S regulator is composed of a base, which contains 6 ATPase subunits and 2 non-ATPase subunits, and a lid, which contains up to 10 non-ATPase subunits. Proteasomes are distributed throughout eukaryotic cells at a high concentration and cleave peptides in an ATP/ubiquitin-dependent process in a non-lysosomal pathway. An essential function of a modified proteasome, the immunoproteasome, is the processing of class I MHC peptides. This gene encodes one of the ATPase subunits, a member of the triple-A family of ATPases which have a chaperone-like activity. Pseudogenes have been identified on chrom</p>
Function :	<p>function:The 26S protease is involved in the ATP-dependent degradation of ubiquitinated proteins. The regulatory (or ATPase) complex confers ATP dependency and substrate specificity to the 26S complex.,similarity:Belongs to the AAA ATPase family.,subunit:Found in the multi-protein complexes: the 26S proteasome (formed from the 20S proteasome and PA700), and the modulator. PA700 consists of 28 subunits arranged to form a cylinder-shaped complex by four stacked rings, each containing seven subunits. Interacts with PAAF1.,</p>
Subcellular Location :	Cytoplasm . Nucleus .
Expression :	Aorta,Urinary bladder,

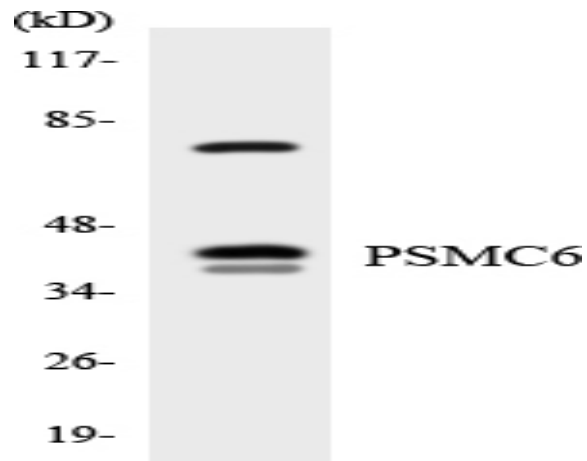
Products Images



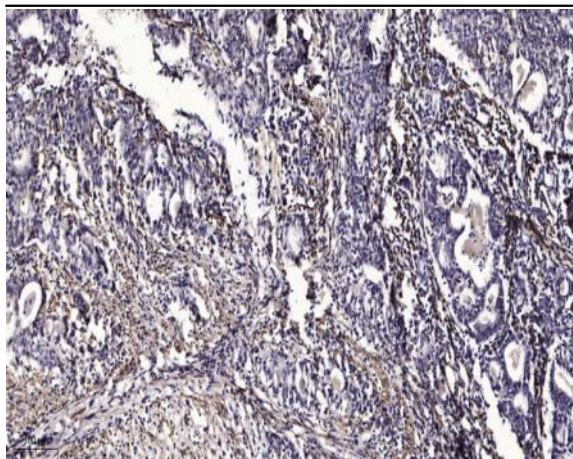
Western Blot analysis of various cells using PSMC6 Polyclonal Antibody



Western blot analysis of lysates from HepG2, 293, and RAW264.7 cells, using PSMC6 Antibody. The lane on the right is blocked with the synthesized peptide.



Western blot analysis of the lysates from HeLa cells using PSMC6 antibody.



Immunohistochemical analysis of paraffin-embedded human Gastric adenocarcinoma. 1, Antibody was diluted at 1:200(4° overnight). 2, Tris-EDTA,pH9.0 was used for antigen retrieval. 3,Secondary antibody was diluted at 1:200(room temperature, 45min).