

PRPH Polyclonal Antibody

Catalog No :	YT3870
Reactivity :	Human;Rat
Applications :	WB;IHC;IF;ELISA
Target :	Peripherin
Fields :	>>Amyotrophic lateral sclerosis;>>Pathways of neurodegeneration - multiple diseases
Gene Name :	PRPH
Protein Name :	Peripherin
Human Gene Id :	5630
Human Swiss Prot No :	P41219
Mouse Swiss Prot No :	P15331
Rat Swiss Prot No :	P21807
Immunogen :	The antiserum was produced against synthesized peptide derived from human Peripherin. AA range:421-470
Specificity :	PRPH Polyclonal Antibody detects endogenous levels of PRPH protein.
Formulation :	Liquid in PBS containing 50% glycerol, 0.5% BSA and 0.02% sodium azide.
Source :	Polyclonal, Rabbit,IgG
Dilution :	WB 1:500 - 1:2000. IHC 1:100 - 1:300. ELISA: 1:20000.. IF 1:50-200
Purification :	The antibody was affinity-purified from rabbit antiserum by affinity-chromatography using epitope-specific immunogen.
Concentration :	1 mg/ml

Storage Stability : -15°C to -25°C/1 year(Do not lower than -25°C)

Observed Band : 55kD

Cell Pathway : Amyotrophic lateral sclerosis (ALS);

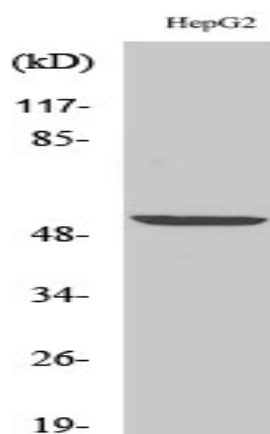
Background : This gene encodes a cytoskeletal protein found in neurons of the peripheral nervous system. The encoded protein is a type III intermediate filament protein with homology to other cytoskeletal proteins such as desmin, and is a different protein that the peripherin found in photoreceptors. Mutations in this gene have been associated with susceptibility to amyotrophic lateral sclerosis. [provided by RefSeq, Jul 2008],

Function : function:Class-III neuronal intermediate filament protein.,online information:Peripherin entry,similarity:Belongs to the intermediate filament family.,

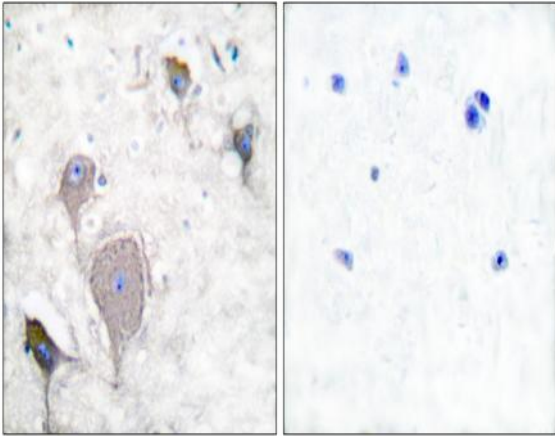
Subcellular Location : Cytoplasm, cytoskeleton . Cell projection, axon . Perikaryon .

Expression : Expressed in the neurons of the outer hair cells in the organ of Corti and to a lesser extent in type I spiral ganglion cells.

Products Images



Western Blot analysis of various cells using PRPH Polyclonal Antibody diluted at 1:1000



Immunohistochemistry analysis of paraffin-embedded human brain tissue, using Peripherin Antibody. The picture on the right is blocked with the synthesized peptide.